

MATN1 Antibody (C-term)
Affinity Purified Rabbit Polyclonal Antibody (Pab)
Catalog # AP12822b

Specification

MATN1 Antibody (C-term) - Product Information

Application	WB, IHC-P,E
Primary Accession	P21941
Other Accession	NP_002370.1
Reactivity	Human
Host	Rabbit
Clonality	Polyclonal
Isotype	Rabbit Ig
Calculated MW	53701
Antigen Region	376-405

MATN1 Antibody (C-term) - Additional Information

Gene ID 4146

Other Names

Cartilage matrix protein, Matrilin-1, MATN1, CMP, CRTM

Target/Specificity

This MATN1 antibody is generated from rabbits immunized with a KLH conjugated synthetic peptide between 376-405 amino acids from the C-terminal region of human MATN1.

Dilution

WB~~1:1000
IHC-P~~1:10~50

Format

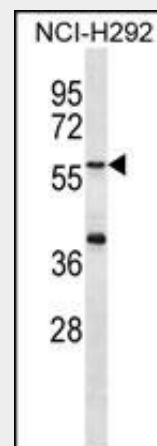
Purified polyclonal antibody supplied in PBS with 0.09% (W/V) sodium azide. This antibody is purified through a protein A column, followed by peptide affinity purification.

Storage

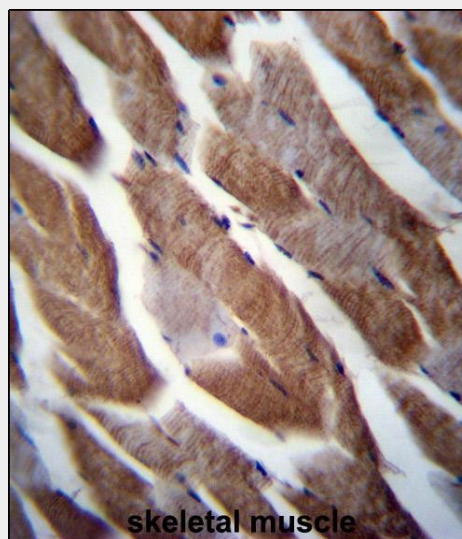
Maintain refrigerated at 2-8°C for up to 2 weeks. For long term storage store at -20°C in small aliquots to prevent freeze-thaw cycles.

Precautions

MATN1 Antibody (C-term) is for research



MATN1 Antibody (C-term) (Cat. #AP12822b) western blot analysis in NCI-H292 cell line lysates (35ug/lane). This demonstrates the MATN1 antibody detected the MATN1 protein (arrow).



MATN1 Antibody (C-term) (Cat. #AP12822b) immunohistochemistry analysis in formalin fixed and paraffin embedded human skeletal muscle followed by peroxidase conjugation of the secondary antibody and DAB staining. This data demonstrates the use of MATN1 Antibody (C-term) for immunohistochemistry. Clinical relevance has not been evaluated.

use only and not for use in diagnostic or therapeutic procedures.

MATN1 Antibody (C-term) - Protein Information

Name MATN1

Synonyms CMP, CRTM

Function

Cartilage matrix protein is a major component of the extracellular matrix of non-articular cartilage. It binds to collagen.

Cellular Location

Secreted, extracellular space, extracellular matrix

MATN1 Antibody (C-term) - Protocols

Provided below are standard protocols that you may find useful for product applications.

- [Western Blot](#)
- [Blocking Peptides](#)
- [Dot Blot](#)
- [Immunohistochemistry](#)
- [Immunofluorescence](#)
- [Immunoprecipitation](#)
- [Flow Cytometry](#)
- [Cell Culture](#)

MATN1 Antibody (C-term) - Background

This gene encodes a member of von Willebrand factor A domain containing protein family. This family of proteins are thought to be involved in the formation of filamentous networks in the extracellular matrices of various tissues. Mutations of this gene have been associated with variety of inherited chondrodysplasias.

MATN1 Antibody (C-term) - References

Jang, J.Y., et al. J. Dent. Res. 89(11):1203-1207(2010)
Fresquet, M., et al. J. Biol. Chem. 285(44):34048-34061(2010)
Wheeler, H.E., et al. PLoS Genet. 5 (10), E1000685 (2009) :
Chen, Z.J., et al. Zhonghua Wai Ke Za Zhi 47(17):1332-1335(2009)
Caporaso, N., et al. PLoS ONE 4 (2), E4653 (2009) :