

RAB3D Antibody (C-term)
Affinity Purified Rabbit Polyclonal Antibody (Pab)
Catalog # AP13216b

Specification

RAB3D Antibody (C-term) - Product Information

Application	WB, IHC-P, FC,E
Primary Accession	O95716
Other Accession	NP_004274.1
Reactivity	Human
Host	Rabbit
Clonality	Polyclonal
Isotype	Rabbit Ig
Calculated MW	24267
Antigen Region	185-212

RAB3D Antibody (C-term) - Additional Information

Gene ID 9545

Other Names

Ras-related protein Rab-3D, RAB3D, GOV, RAB16

Target/Specificity

This RAB3D antibody is generated from rabbits immunized with a KLH conjugated synthetic peptide between 185-212 amino acids from the C-terminal region of human RAB3D.

Dilution

WB~~1:1000
IHC-P~~1:10~50
FC~~1:10~50

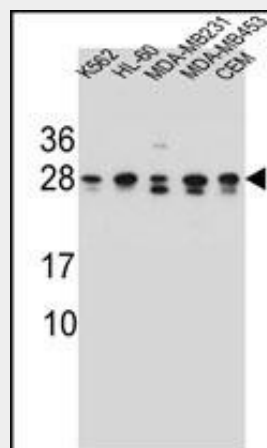
Format

Purified polyclonal antibody supplied in PBS with 0.09% (W/V) sodium azide. This antibody is purified through a protein A column, followed by peptide affinity purification.

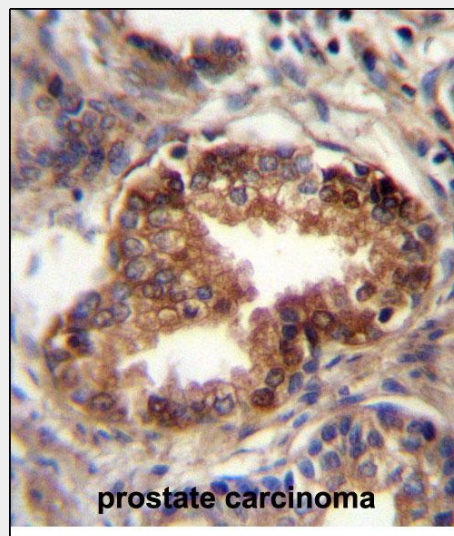
Storage

Maintain refrigerated at 2-8°C for up to 2 weeks. For long term storage store at -20°C in small aliquots to prevent freeze-thaw cycles.

Precautions



RAB3D Antibody (C-term) (Cat. #AP13216b) western blot analysis in K562,HL-60,MDA-MB231,MDA-MB453,CEM cell line lysates (35ug/lane).This demonstrates the RAB3D antibody detected the RAB3D protein (arrow).



RAB3D Antibody (C-term) (Cat. #AP13216b)immunohistochemistry analysis in formalin fixed and paraffin embedded human prostate carcinoma followed by peroxidase conjugation of the secondary antibody and DAB staining.This data demonstrates the use of RAB3D Antibody (C-term) for immunohistochemistry. Clinical

RAB3D Antibody (C-term) is for research use only and not for use in diagnostic or therapeutic procedures.

RAB3D Antibody (C-term) - Protein Information

Name RAB3D

Synonyms GOV, RAB16

Function

Protein transport. Probably involved in regulated exocytosis (By similarity).

Cellular Location

Cell membrane; Lipid-anchor; Cytoplasmic side

Tissue Location

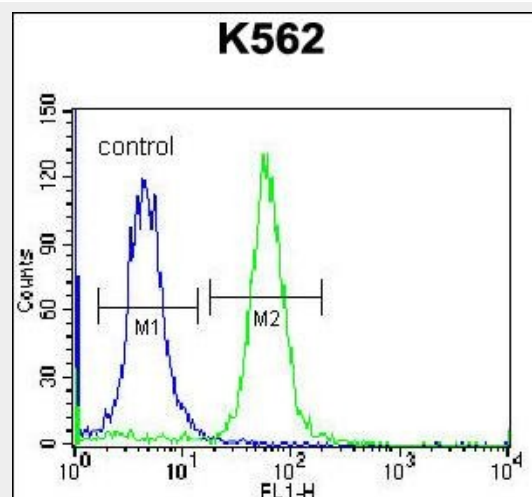
Highly expressed in granulocytes of peripheral blood. Constitutively expressed at low levels in all hematopoietic cell lines investigated

RAB3D Antibody (C-term) - Protocols

Provided below are standard protocols that you may find useful for product applications.

- [Western Blot](#)
- [Blocking Peptides](#)
- [Dot Blot](#)
- [Immunohistochemistry](#)
- [Immunofluorescence](#)
- [Immunoprecipitation](#)
- [Flow Cytometry](#)
- [Cell Culture](#)

relevance has not been evaluated.



RAB3D Antibody (C-term) (Cat. #AP13216b) flow cytometric analysis of K562 cells (right histogram) compared to a negative control cell (left histogram). FITC-conjugated donkey-anti-rabbit secondary antibodies were used for the analysis.

RAB3D Antibody (C-term) - Background

RAB3D is a protein transport. Probably involved in regulated exocytosis (By similarity).

RAB3D Antibody (C-term) - References

- Tian, X., et al. Mol. Cell. Biol. 30(5):1269-1284(2010)
Knop, M., et al. EMBO J. 23(15):2982-2992(2004)
Matsumoto, M., et al. Proc. Natl. Acad. Sci. U.S.A. 101(22):8313-8318(2004)
Nguyen, D., et al. J. Cell. Physiol. 197(3):400-408(2003)
Fukuda, M. J. Biol. Chem. 278(17):15373-15380(2003)