

TEX261 Antibody (C-term)
Affinity Purified Rabbit Polyclonal Antibody (Pab)
Catalog # AP13251b

Specification

TEX261 Antibody (C-term) - Product Information

Application	WB, IHC-P, FC,E
Primary Accession	Q6UWH6
Other Accession	Q5BJW3 , Q62302 , Q58DA4 , NP_653183.2
Reactivity	Human
Predicted	Bovine, Mouse, Rat
Host	Rabbit
Clonality	Polyclonal
Isotype	Rabbit Ig
Calculated MW	22538
Antigen Region	148-176

TEX261 Antibody (C-term) - Additional Information

Gene ID 113419

Other Names

Protein TEX261, TEX261

Target/Specificity

This TEX261 antibody is generated from rabbits immunized with a KLH conjugated synthetic peptide between 148-176 amino acids from the C-terminal region of human TEX261.

Dilution

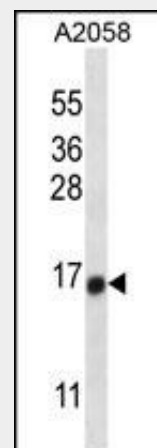
WB~~1:1000
IHC-P~~1:10~50
FC~~1:10~50

Format

Purified polyclonal antibody supplied in PBS with 0.09% (W/V) sodium azide. This antibody is purified through a protein A column, followed by peptide affinity purification.

Storage

Maintain refrigerated at 2-8°C for up to 2 weeks. For long term storage store at -20°C in small aliquots to prevent freeze-thaw



TEX261 Antibody (C-term) (Cat. #AP13251b) western blot analysis in A2058 cell line lysates (35ug/lane). This demonstrates the TEX261 antibody detected the TEX261 protein (arrow).



TEX261 Antibody (C-term) (Cat. #AP13251b) immunohistochemistry analysis in formalin fixed and paraffin embedded human colon tissue followed by peroxidase conjugation of the secondary antibody and DAB staining. This data demonstrates the use of TEX261 Antibody (C-term) for immunohistochemistry. Clinical relevance has not been evaluated.

cycles.

Precautions

TEX261 Antibody (C-term) is for research use only and not for use in diagnostic or therapeutic procedures.

TEX261 Antibody (C-term) - Protein Information

Name TEX261

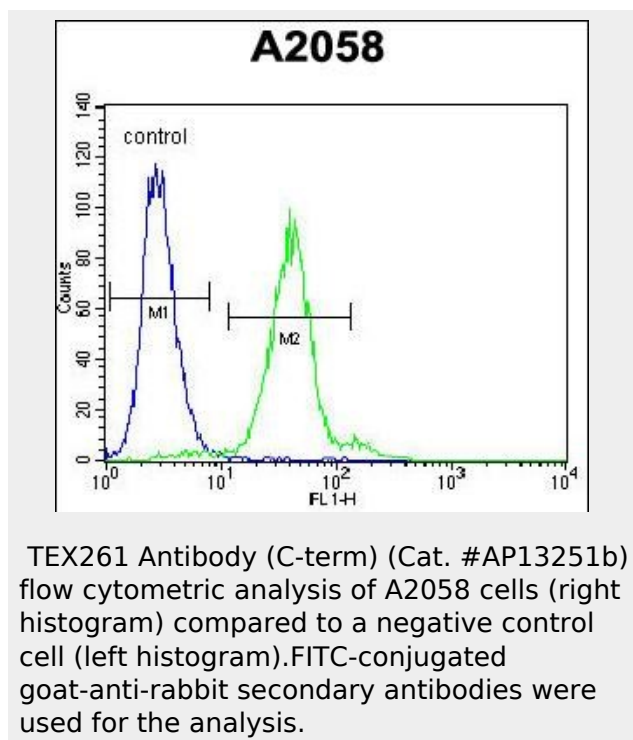
Cellular Location

Membrane; Multi-pass membrane protein

TEX261 Antibody (C-term) - Protocols

Provided below are standard protocols that you may find useful for product applications.

- [Western Blot](#)
- [Blocking Peptides](#)
- [Dot Blot](#)
- [Immunohistochemistry](#)
- [Immunofluorescence](#)
- [Immunoprecipitation](#)
- [Flow Cytometry](#)
- [Cell Culture](#)



TEX261 Antibody (C-term) - Background

The specific function of this protein remains unknown.

TEX261 Antibody (C-term) - References

Clark, H.F., et al. Genome Res. 13(10):2265-2270(2003)
Lopez-Fernandez, L.A., et al. Biochem. Biophys. Res. Commun. 242(3):565-569(1998)