

TFCP2L1 Antibody (Center)
Affinity Purified Rabbit Polyclonal Antibody (Pab)
Catalog # AP13367C

Specification

TFCP2L1 Antibody (Center) - Product Information

Application	WB, IHC-P, FC,E
Primary Accession	Q9NZI6
Other Accession	Q3UNW5 , NP_055368.1
Reactivity	Human, Mouse
Host	Rabbit
Clonality	Polyclonal
Isotype	Rabbit Ig
Antigen Region	222-251

TFCP2L1 Antibody (Center) - Additional Information

Gene ID 29842

Other Names

Transcription factor CP2-like protein 1,
CP2-related transcriptional repressor 1,
CRTR-1, Transcription factor LBP-9,
TFCP2L1, CRTR1, LBP9

Target/Specificity

This TFCP2L1 antibody is generated from rabbits immunized with a KLH conjugated synthetic peptide between 222-251 amino acids from the Central region of human TFCP2L1.

Dilution

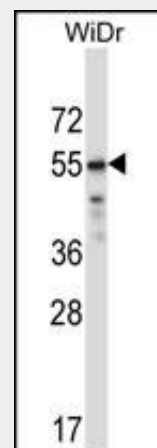
WB~~1:1000
IHC-P~~1:10~50
FC~~1:10~50

Format

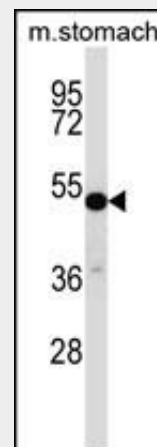
Purified polyclonal antibody supplied in PBS with 0.09% (W/V) sodium azide. This antibody is purified through a protein A column, followed by peptide affinity purification.

Storage

Maintain refrigerated at 2-8°C for up to 2 weeks. For long term storage store at -20°C in small aliquots to prevent freeze-thaw cycles.



TFCP2L1 Antibody (Center) (Cat. #AP13367c) western blot analysis in WiDr cell line lysates (35ug/lane). This demonstrates the TFCP2L1 antibody detected the TFCP2L1 protein (arrow).



TFCP2L1 Antibody (Center) (Cat. #AP13367c) western blot analysis in mouse stomach tissue lysates (35ug/lane). This demonstrates the TFCP2L1 antibody detected the TFCP2L1 protein (arrow).

Precautions

TFCP2L1 Antibody (Center) is for research use only and not for use in diagnostic or therapeutic procedures.

TFCP2L1 Antibody (Center) - Protein Information

Name TFCP2L1

Synonyms CRTR1, LBP9

Function

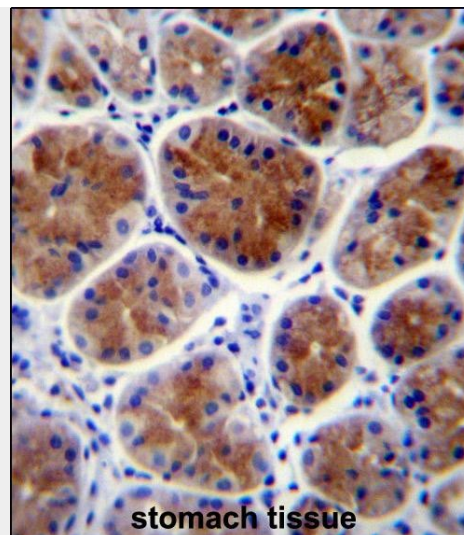
Transcription factor that facilitates establishment and maintenance of pluripotency in embryonic stem cells (ESCs) (PubMed:25215486, PubMed:26906118). With KLF2, acts as the major effector of self-renewal that mediates induction of pluripotency downstream of LIF/STAT3 and Wnt/beta-catenin signaling (By similarity). Required for normal duct development in the salivary gland and kidney (By similarity). Coordinates the development of the kidney collecting ducts intercalated (IC) and principal (PC) cells, which regulate acid-base and salt-water homeostasis, respectively (By similarity). Regulates the expression of IC genes including subunits B1 and D2 of the V-ATPase complex, OXGR1, CA12, SLC4A1, AQP6 and IC-specific transcription factor FOXI1 (By similarity). Regulates also the expression of JAG1 and subsequent notch signaling in the collecting duct (By similarity). JAG1 initiates notch signaling in PCs but inhibits notch signaling in ICs (By similarity). Acts as a transcriptional suppressor that may suppress UBP1-mediated transcriptional activation (By similarity). Modulates the placental expression of CYP11A1 (PubMed:10644752).

Cellular Location

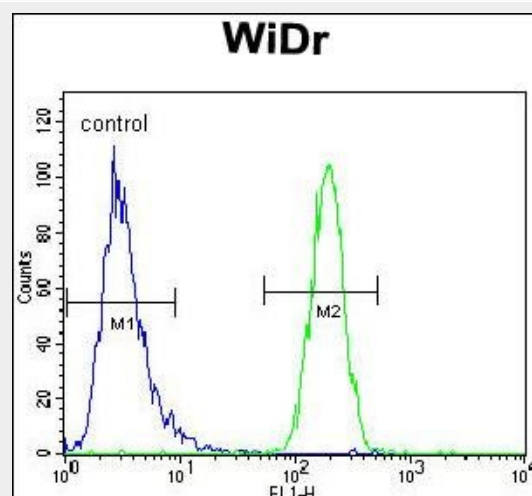
Nucleus.

Tissue Location

Highly expressed in placental JEG-3 cells and very low levels of expression in non-steroidogenic cells. No expression was



TFCP2L1 Antibody (Center) (Cat. #AP13367c) immunohistochemistry analysis in formalin fixed and paraffin embedded human stomach tissue followed by peroxidase conjugation of the secondary antibody and DAB staining. This data demonstrates the use of TFCP2L1 Antibody (Center) for immunohistochemistry. Clinical relevance has not been evaluated.



TFCP2L1 Antibody (Center) (Cat. #AP13367c) flow cytometric analysis of WiDr cells (right histogram) compared to a negative control cell (left histogram). FITC-conjugated goat-anti-rabbit secondary antibodies were used for the analysis.

TFCP2L1 Antibody (Center) - Background

TFCP2L1 is a transcriptional suppressor. It may suppress UBP1-mediated transcriptional

seen in adrenal NCI-H295A cells or in adrenal tissue

activation. Modulates the placental expression of CYP11A1.

TFCP2L1 Antibody (Center) - Protocols

Provided below are standard protocols that you may find useful for product applications.

- [Western Blot](#)
- [Blocking Peptides](#)
- [Dot Blot](#)
- [Immunohistochemistry](#)
- [Immunofluorescence](#)
- [Immunoprecipitation](#)
- [Flow Cytometry](#)
- [Cell Culture](#)

TFCP2L1 Antibody (Center) - References

To, S., et al. PLoS ONE 5 (7), E11702 (2010) :
Henderson, Y.C., et al. DNA Cell Biol.
27(2):71-79(2008)
Hillier, L.W., et al. Nature
434(7034):724-731(2005)
Huang, N., et al. Mol. Endocrinol.
19(2):409-420(2005)
Rodda, S., et al. J. Biol. Chem.
276(5):3324-3332(2001)