

**APOOL Antibody (C-term)**  
**Affinity Purified Rabbit Polyclonal Antibody (Pab)**  
**Catalog # AP14187b**

**Specification**

**APOOL Antibody (C-term) - Product Information**

Application	<b>WB, IHC-P,E</b>
Primary Accession	<a href="#">O6UXV4</a>
Other Accession	<a href="#">NP_940852.3</a>
Reactivity	<b>Human</b>
Host	<b>Rabbit</b>
Clonality	<b>Polyclonal</b>
Isotype	<b>Rabbit Ig</b>
Calculated MW	<b>29159</b>
Antigen Region	<b>172-200</b>

**APOOL Antibody (C-term) - Additional Information**

**Gene ID** 139322

**Other Names**

MICOS complex subunit MIC27,  
Apolipoprotein O-like, Protein FAM121A,  
APOOL, CXorf33, FAM121A, MIC27

**Target/Specificity**

This APOOL antibody is generated from rabbits immunized with a KLH conjugated synthetic peptide between 172-200 amino acids from the C-terminal region of human APOOL.

**Dilution**

WB~~1:1000  
IHC-P~~1:10~50

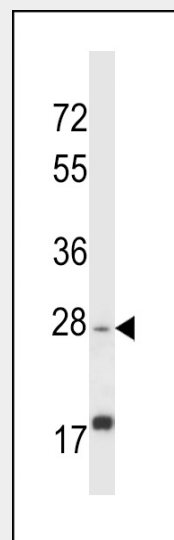
**Format**

Purified polyclonal antibody supplied in PBS with 0.09% (W/V) sodium azide. This antibody is purified through a protein A column, followed by peptide affinity purification.

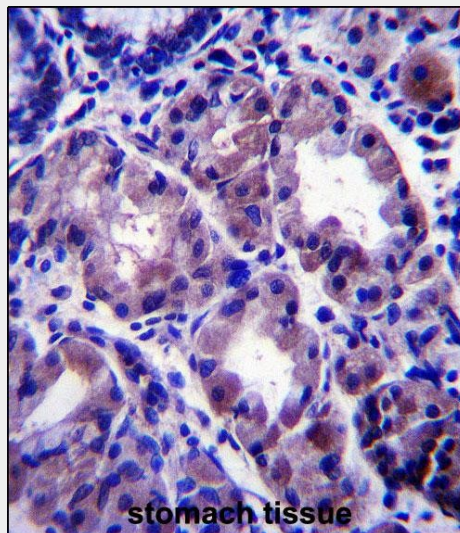
**Storage**

Maintain refrigerated at 2-8°C for up to 2 weeks. For long term storage store at -20°C in small aliquots to prevent freeze-thaw cycles.

**Precautions**



APOOL Antibody (C-term) (Cat. #AP14187b) western blot analysis in HL-60 cell line lysates (35ug/lane). This demonstrates the APOOL antibody detected the APOOL protein (arrow).



APOOL Antibody (C-term) (Cat. #AP14187b) immunohistochemistry analysis in formalin fixed and paraffin embedded human stomach tissue followed by peroxidase conjugation of the secondary antibody and DAB staining. This data demonstrates the use of APOOL Antibody

APOOL Antibody (C-term) is for research use only and not for use in diagnostic or therapeutic procedures.

(C-term) for immunohistochemistry. Clinical relevance has not been evaluated.

#### **APOOL Antibody (C-term) - Protein Information**

**Name** APOOL

**Synonyms** CXorf33, FAM121A, MIC27

#### **Function**

Component of the MICOS complex, a large protein complex of the mitochondrial inner membrane that plays crucial roles in the maintenance of crista junctions, inner membrane architecture, and formation of contact sites to the outer membrane. Specifically binds to cardiolipin (in vitro) but not to the precursor lipid phosphatidylglycerol. Plays a crucial role in crista junction formation and mitochondrial function (PubMed:<a href="http://www.uniprot.org/citations/23704930" target="\_blank">23704930</a>), (PubMed:<a href="http://www.uniprot.org/citations/25764979" target="\_blank">25764979</a>).

#### **Cellular Location**

Mitochondrion inner membrane; Multi-pass membrane protein. Mitochondrion

#### **APOOL Antibody (C-term) - Background**

Belongs to the apolipoprotein O family.

#### **APOOL Antibody (C-term) - References**

Olsen, J.V., et al. Cell 127(3):635-648(2006)  
Ross, M.T., et al. Nature 434(7031):325-337(2005)  
Clark, H.F., et al. Genome Res. 13(10):2265-2270(2003)

#### **APOOL Antibody (C-term) - Protocols**

Provided below are standard protocols that you may find useful for product applications.

- [Western Blot](#)
- [Blocking Peptides](#)
- [Dot Blot](#)
- [Immunohistochemistry](#)
- [Immunofluorescence](#)
- [Immunoprecipitation](#)
- [Flow Cytometry](#)
- [Cell Culture](#)