

**D19L4 Antibody (N-term)**  
**Affinity Purified Rabbit Polyclonal Antibody (Pab)**  
**Catalog # AP14213A**

**Specification**

**D19L4 Antibody (N-term) - Product Information**

Application	<b>WB, IHC-P,E</b>
Primary Accession	<a href="#">O7Z388</a>
Other Accession	<a href="#">NP_861452.2</a>
Reactivity	<b>Human</b>
Host	<b>Rabbit</b>
Clonality	<b>Polyclonal</b>
Isotype	<b>Rabbit Ig</b>
Calculated MW	<b>83756</b>
Antigen Region	<b>1-30</b>

**D19L4 Antibody (N-term) - Additional Information**

**Gene ID** 286148

**Other Names**

Probable C-mannosyltransferase DPY19L4, 241-, Dpy-19-like protein 4, Protein dpy-19 homolog 4, DPY19L4

**Target/Specificity**

This D19L4 antibody is generated from rabbits immunized with a KLH conjugated synthetic peptide between 1-30 amino acids from the N-terminal region of human D19L4.

**Dilution**

WB~~1:1000  
IHC-P~~1:10~50

**Format**

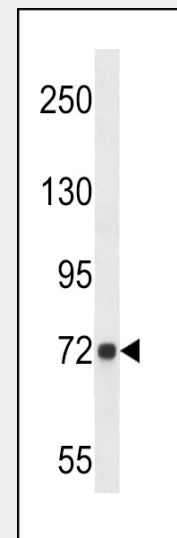
Purified polyclonal antibody supplied in PBS with 0.09% (W/V) sodium azide. This antibody is purified through a protein A column, followed by peptide affinity purification.

**Storage**

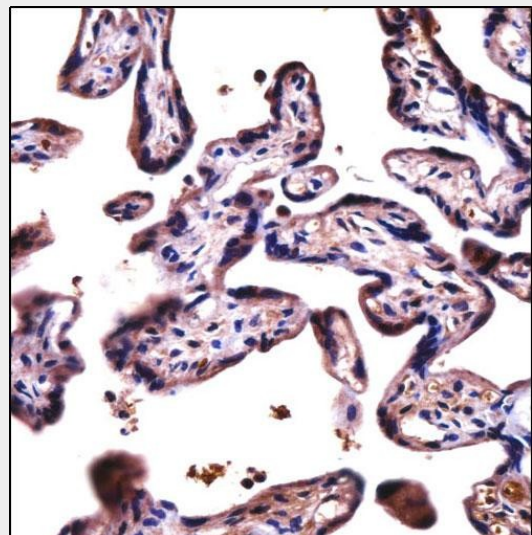
Maintain refrigerated at 2-8°C for up to 2 weeks. For long term storage store at -20°C in small aliquots to prevent freeze-thaw cycles.

**Precautions**

D19L4 Antibody (N-term) is for research use



D19L4 Antibody (N-term) (Cat. #AP14213a) western blot analysis in A549 cell line lysates (35ug/lane). This demonstrates the D19L4 antibody detected the D19L4 protein (arrow).



D19L4 Antibody (N-term) (AP14213a) immunohistochemistry analysis in formalin fixed and paraffin embedded human placenta tissue followed by peroxidase conjugation of the secondary antibody and DAB staining. This data demonstrates the use of D19L4 Antibody (N-term) for

only and not for use in diagnostic or therapeutic procedures.

immunohistochemistry. Clinical relevance has not been evaluated.

#### **D19L4 Antibody (N-term) - Protein Information**

**Name** DPY19L4

#### **Function**

Probable C-mannosyltransferase that mediates C-mannosylation of tryptophan residues on target proteins.

#### **Cellular Location**

Membrane; Multi-pass membrane protein

#### **Tissue Location**

Widely expressed..

#### **D19L4 Antibody (N-term) - Background**

The function of this protein remains unknown.

#### **D19L4 Antibody (N-term) - References**

Tsuritani, K., et al. Genome Res. 17(7):1005-1014(2007)

#### **D19L4 Antibody (N-term) - Protocols**

Provided below are standard protocols that you may find useful for product applications.

- [Western Blot](#)
- [Blocking Peptides](#)
- [Dot Blot](#)
- [Immunohistochemistry](#)
- [Immunofluorescence](#)
- [Immunoprecipitation](#)
- [Flow Cytometry](#)
- [Cell Culture](#)