

NR1D1 Antibody (Center)
Affinity Purified Rabbit Polyclonal Antibody (Pab)
Catalog # AP14215b

Specification

NR1D1 Antibody (Center) - Product Information

Application	WB,E
Primary Accession	P20393
Other Accession	Q63503 , Q3UV55 , Q08E02 , NP_068370.1 , B3SV56
Reactivity	Human
Predicted	Bovine, Mouse, Rat, Sheep
Host	Rabbit
Clonality	Polyclonal
Isotype	Rabbit Ig
Calculated MW	66805
Antigen Region	191-219

NR1D1 Antibody (Center) - Additional Information

Gene ID 9572

Other Names

Nuclear receptor subfamily 1 group D member 1, Rev-erbA-alpha, V-erbA-related protein 1, EAR-1, NR1D1, EAR1, HREV, THRAL

Target/Specificity

This NR1D1 antibody is generated from rabbits immunized with a KLH conjugated synthetic peptide between 191-219 amino acids from the Central region of human NR1D1.

Dilution

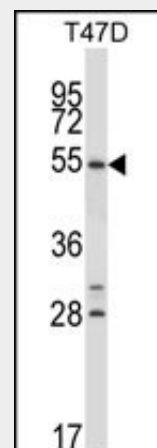
WB~1:1000

Format

Purified polyclonal antibody supplied in PBS with 0.09% (W/V) sodium azide. This antibody is purified through a protein A column, followed by peptide affinity purification.

Storage

Maintain refrigerated at 2-8°C for up to 2 weeks. For long term storage store at -20°C



NR1D1 Antibody (Center) (Cat. #AP14215b) western blot analysis in T47D cell line lysates (35ug/lane). This demonstrates the NR1D1 antibody detected the NR1D1 protein (arrow).

NR1D1 Antibody (Center) - Background

NR1D1 functions as a constitutive transcriptional repressor. Possible receptor for triiodothyronine.

NR1D1 Antibody (Center) - References

- Bailey, S.D., et al. Diabetes Care (2010) In press :
Phelan, C.A., et al. Nat. Struct. Mol. Biol. 17(7):808-814(2010)
Yin, L., et al. Proc. Natl. Acad. Sci. U.S.A. 107(25):11614-11619(2010)
Campos-de-Sousa, S., et al. J. Biol. Rhythms 25(2):132-137(2010)
Kripke, D.F., et al. Psychiatry Investig 7(1):36-42(2010)

in small aliquots to prevent freeze-thaw cycles.

Precautions

NR1D1 Antibody (Center) is for research use only and not for use in diagnostic or therapeutic procedures.

NR1D1 Antibody (Center) - Protein Information

Name NR1D1

Synonyms EAR1, HREV, THRAL

Function

Transcriptional repressor which coordinates circadian rhythm and metabolic pathways in a heme-dependent manner. Integral component of the complex transcription machinery that governs circadian rhythmicity and forms a critical negative limb of the circadian clock by directly repressing the expression of core clock components ARTNL/BMAL1, CLOCK and CRY1. Also regulates genes involved in metabolic functions, including lipid and bile acid metabolism, adipogenesis, gluconeogenesis and the macrophage inflammatory response. Acts as a receptor for heme which stimulates its interaction with the NCOR1/HDAC3 corepressor complex, enhancing transcriptional repression. Recognizes two classes of DNA response elements within the promoter of its target genes and can bind to DNA as either monomers or homodimers, depending on the nature of the response element. Binds as a monomer to a response element composed of the consensus half-site motif 5'-[A/G]GGTCA-3' preceded by an A/T-rich 5' sequence (RevRE), or as a homodimer to a direct repeat of the core motif spaced by two nucleotides (RevDR-2). Acts as a potent competitive repressor of ROR alpha (RORA) function and regulates the levels of its ligand heme by repressing the expression of PPARGC1A, a potent inducer of heme synthesis. Regulates lipid metabolism by repressing the expression of APOC3 and by influencing the activity of sterol response element binding proteins (SREBPs); represses INSIG2 which interferes with the proteolytic activation of SREBPs which in turn govern the rhythmic expression of enzymes with key functions in sterol and fatty acid synthesis. Regulates

gluconeogenesis via repression of G6PC1 and PEPCK and adipocyte differentiation via repression of PPARG. Regulates glucagon release in pancreatic alpha- cells via the AMPK-NAMPT-SIRT1 pathway and the proliferation, glucose- induced insulin secretion and expression of key lipogenic genes in pancreatic-beta cells. Positively regulates bile acid synthesis by increasing hepatic expression of CYP7A1 via repression of NR0B2 and NFIL3 which are negative regulators of CYP7A1. Modulates skeletal muscle oxidative capacity by regulating mitochondrial biogenesis and autophagy; controls mitochondrial biogenesis and respiration by interfering with the STK11-PRKAA1/2-SIRT1-PPARGC1A signaling pathway. Represses the expression of SERPINE1/PAI1, an important modulator of cardiovascular disease and the expression of inflammatory cytokines and chemokines in macrophages. Represses gene expression at a distance in macrophages by inhibiting the transcription of enhancer-derived RNAs (eRNAs). Plays a role in the circadian regulation of body temperature and negatively regulates thermogenic transcriptional programs in brown adipose tissue (BAT); imposes a circadian oscillation in BAT activity, increasing body temperature when awake and depressing thermogenesis during sleep. In concert with NR2E3, regulates transcriptional networks critical for photoreceptor development and function. In addition to its activity as a repressor, can also act as a transcriptional activator. In the ovarian granulosa cells acts as a transcriptional activator of STAR which plays a role in steroid biosynthesis. In collaboration with SP1, activates GJA1 transcription in a heme-independent manner. Represses the transcription of CYP2B10, CYP4A10 and CYP4A14 (By similarity). Represses the transcription of CES2 (By similarity). Represses and regulates the circadian expression of TSHB in a NCOR1- dependent manner (By similarity). Negatively regulates the protein stability of NR3C1 and influences the time-dependent subcellular distribution of NR3C1, thereby affecting its transcriptional regulatory activity (By similarity). Plays a critical role in the circadian control of neutrophilic inflammation in the lung; under resting, non- stress conditions, acts as a rhythmic repressor to limit inflammatory

activity whereas in the presence of inflammatory triggers undergoes ubiquitin-mediated degradation thereby relieving inhibition of the inflammatory response (By similarity). Plays a key role in the circadian regulation of microglial activation and neuroinflammation; suppresses microglial activation through the NF-kappaB pathway in the central nervous system (By similarity). Plays a role in the regulation of the diurnal rhythms of lipid and protein metabolism in the skeletal muscle via transcriptional repression of genes controlling lipid and amino acid metabolism in the muscle (By similarity).

Cellular Location

Nucleus

{ECO:0000250|UniProtKB:Q3UV55}.

Cytoplasm

{ECO:0000250|UniProtKB:Q3UV55}. Cell

projection, dendrite

{ECO:0000250|UniProtKB:Q3UV55}. Cell

projection, dendritic spine

{ECO:0000250|UniProtKB:Q3UV55}.

Note=Localizes to the cytoplasm, dendrites and dendritic spine in the presence of OPHN1. Localizes predominantly to the nucleus at ZT8 whereas it is cytoplasmic at ZT20 Phosphorylation by CSNK1E enhances its cytoplasmic localization

{ECO:0000250|UniProtKB:Q3UV55}

Tissue Location

Widely expressed. Expressed at high levels in the liver, adipose tissue, skeletal muscle and brain. Also expressed in endothelial cells (ECs), vascular smooth muscle cells (VSMCs) and macrophages. Expression oscillates diurnally in the suprachiasmatic nucleus (SCN) of the hypothalamus as well as in peripheral tissues Expression increases during the differentiation of pre-adipocytes into mature adipocytes. Expressed at high levels in some squamous carcinoma cell lines.

NR1D1 Antibody (Center) - Protocols

Provided below are standard protocols that you may find useful for product applications.

- [Western Blot](#)
- [Blocking Peptides](#)
- [Dot Blot](#)

- [Immunohistochemistry](#)
- [Immunofluorescence](#)
- [Immunoprecipitation](#)
- [Flow Cytometry](#)
- [Cell Culture](#)