

**Mouse Pdgfra Antibody (Center)**  
**Affinity Purified Rabbit Polyclonal Antibody (Pab)**  
**Catalog # AP14254c**

**Specification**

**Mouse Pdgfra Antibody (Center) - Product Information**

Application	WB,E
Primary Accession	<a href="#">P26618</a>
Other Accession	<a href="#">NP_035188.2</a> , <a href="#">NP_001076785.1</a>
Reactivity	Mouse
Host	Rabbit
Clonality	Polyclonal
Isotype	Rabbit Ig
Calculated MW	122683
Antigen Region	678-706

**Mouse Pdgfra Antibody (Center) - Additional Information**

**Gene ID** 18595

**Other Names**

Platelet-derived growth factor receptor alpha, PDGF-R-alpha, PDGFR-alpha, Alpha platelet-derived growth factor receptor, Alpha-type platelet-derived growth factor receptor, CD140 antigen-like family member A, Platelet-derived growth factor alpha receptor, CD140a, Pdgfra

**Target/Specificity**

This Mouse Pdgfra antibody is generated from rabbits immunized with a KLH conjugated synthetic peptide between 678-706 amino acids from the Central region of mouse Pdgfra.

**Dilution**

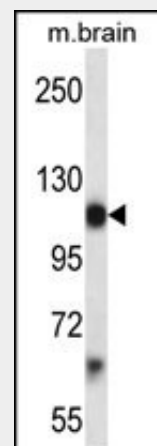
WB~~1:1000

**Format**

Purified polyclonal antibody supplied in PBS with 0.09% (W/V) sodium azide. This antibody is purified through a protein A column, followed by peptide affinity purification.

**Storage**

Maintain refrigerated at 2-8°C for up to 2



Mouse Pdgfra Antibody (Center) (Cat. #AP14254c) western blot analysis in mouse brain tissue lysates (35ug/lane). This demonstrates the Pdgfra antibody detected the Pdgfra protein (arrow).

**Mouse Pdgfra Antibody (Center) - Background**

Receptor that binds both PDGFA and PDGFB and has a tyrosine-protein kinase activity.

**Mouse Pdgfra Antibody (Center) - References**

- Artus, J., et al. Development 137(20):3361-3372(2010)
- Bardsley, M.R., et al. Gastroenterology 139(3):942-952(2010)
- Bax, N.A., et al. Dev. Dyn. 239(8):2307-2317(2010)
- Lei, H., et al. Am. J. Pathol. 177(1):132-140(2010)
- Zheng, K., et al. J. Neurosci. 30(24):8245-8250(2010)

weeks. For long term storage store at -20°C in small aliquots to prevent freeze-thaw cycles.

### **Precautions**

Mouse Pdgfra Antibody (Center) is for research use only and not for use in diagnostic or therapeutic procedures.

### **Mouse Pdgfra Antibody (Center) - Protein Information**

#### **Name** Pdgfra

#### **Function**

Tyrosine-protein kinase that acts as a cell-surface receptor for PDGFA, PDGFB and PDGFC and plays an essential role in the regulation of embryonic development, cell proliferation, survival and chemotaxis. Depending on the context, promotes or inhibits cell proliferation and cell migration. Plays an important role in the differentiation of bone marrow-derived mesenchymal stem cells. Required for normal skeleton development and cephalic closure during embryonic development. Required for normal development of the mucosa lining the gastrointestinal tract, and for recruitment of mesenchymal cells and normal development of intestinal villi. Plays a role in cell migration and chemotaxis in wound healing. Plays a role in platelet activation, secretion of agonists from platelet granules, and in thrombin-induced platelet aggregation. Binding of its cognate ligands - homodimeric PDGFA, homodimeric PDGFB, heterodimers formed by PDGFA and PDGFB or homodimeric PDGFC -leads to the activation of several signaling cascades; the response depends on the nature of the bound ligand and is modulated by the formation of heterodimers between PDGFRA and PDGFRB. Phosphorylates PIK3R1, PLCG1, and PTPN11. Activation of PLCG1 leads to the production of the cellular signaling molecules diacylglycerol and inositol 1,4,5-trisphosphate, mobilization of cytosolic Ca(2+) and the activation of protein kinase C. Phosphorylates PIK3R1, the regulatory subunit of phosphatidylinositol 3-kinase, and thereby mediates activation of the AKT1 signaling pathway. Mediates activation of HRAS and of the MAP kinases MAPK1/ERK2 and/or MAPK3/ERK1. Promotes activation of STAT

family members STAT1, STAT3 and STAT5A and/or STAT5B. Receptor signaling is down-regulated by protein phosphatases that dephosphorylate the receptor and its down-stream effectors, and by rapid internalization of the activated receptor.

**Cellular Location**

Cell membrane

{ECO:0000250|UniProtKB:P16234};

Single-pass type I membrane protein

{ECO:0000250|UniProtKB:P16234} Cell

projection, cilium. Golgi apparatus

**Tissue Location**

Focally expressed in cortical interstitial cells and highly expressed in the interstitium of the papillary region. Also expressed by adventitial cells in arterial vessels.

Up-regulated in areas of renal fibrosis. In mice with unilateral ureteral obstruction, expression in cortical interstitial cells becomes prominent at day 4 which increases progressively until day 14

**Mouse Pdgfra Antibody (Center) -  
Protocols**

Provided below are standard protocols that you may find useful for product applications.

- [Western Blot](#)
- [Blocking Peptides](#)
- [Dot Blot](#)
- [Immunohistochemistry](#)
- [Immunofluorescence](#)
- [Immunoprecipitation](#)
- [Flow Cytometry](#)
- [Cell Culture](#)