

**Rat TRPV3 Antibody (C-term)**  
**Purified Rabbit Polyclonal Antibody (Pab)**  
**Catalog # AP1425b**

**Specification**

**Rat TRPV3 Antibody (C-term) - Product Information**

Application	WB, IHC-P,E
Primary Accession	<a href="#">Q4QYD9</a>
Reactivity	Human
Host	Rabbit
Clonality	Polyclonal
Isotype	Rabbit Ig
Calculated MW	90273
Antigen Region	662-692

**Rat TRPV3 Antibody (C-term) - Additional Information**

**Other Names**

Heat sensitive channel TRPV3

**Target/Specificity**

This Rat TRPV3 antibody is generated from rabbits immunized with a KLH conjugated synthetic peptide between 662-692 amino acids from the C-terminal region of rat TRPV3.

**Dilution**

WB~~1:1000

IHC-P~~1:10~50

**Format**

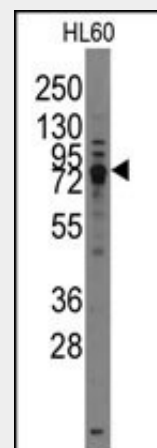
Purified monoclonal antibody supplied in PBS with 0.09% (W/V) sodium azide. This antibody is purified through a protein G column, followed by dialysis against PBS.

**Storage**

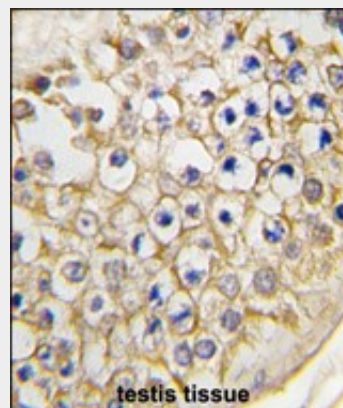
Maintain refrigerated at 2-8°C for up to 2 weeks. For long term storage store at -20°C in small aliquots to prevent freeze-thaw cycles.

**Precautions**

Rat TRPV3 Antibody (C-term) is for research use only and not for use in diagnostic or therapeutic procedures.



Western blot analysis of TRPV3 Antibody (C-term) (Cat.#AP1425b) in HL60 cell line lysates (35ug/lane). TRPV3(arrow) was detected using the purified Pab.



Formalin-fixed and paraffin-embedded human testis tissue reacted with TRPV3 Antibody (C-term) (Cat.#AP1425b), which was peroxidase-conjugated to the secondary antibody, followed by DAB staining. This data demonstrates the use of this antibody for immunohistochemistry; clinical relevance has not been evaluated.

**Rat TRPV3 Antibody (C-term) - Background**

TRPV3 belongs to a family of nonselective

**Rat TRPV3 Antibody (C-term) - Protein Information****Name** Q4QYD9**Cellular Location**

Membrane

{ECO:0000256|ARBA:ARBA00004141};

Multi- pass membrane protein

{ECO:0000256|ARBA:ARBA00004141}

cation channels that function in a variety of processes, including temperature sensation and vasoregulation. The thermosensitive members of this family are expressed in subsets of sensory neurons that terminate in the skin, and are activated at distinct physiological temperatures. This channel is activated at temperatures between 22 and 40 degrees C.

**Rat TRPV3 Antibody (C-term) - References**

Frederick,J., Biochem. Biophys. Res. Commun. 358 (4), 1058-1064 (2007)

Asakawa,M., J. Invest. Dermatol. 126 (12), 2664-2672 (2006)

**Rat TRPV3 Antibody (C-term) - Protocols**

Provided below are standard protocols that you may find useful for product applications.

- [Western Blot](#)
- [Blocking Peptides](#)
- [Dot Blot](#)
- [Immunohistochemistry](#)
- [Immunofluorescence](#)
- [Immunoprecipitation](#)
- [Flow Cytometry](#)
- [Cell Culture](#)