

AFP Antibody (Center)
Purified Rabbit Polyclonal Antibody (Pab)
Catalog # AP1430c

Specification

AFP Antibody (Center) - Product Information

Application	WB, IHC-P,E
Primary Accession	P02771
Reactivity	Human
Host	Rabbit
Clonality	Polyclonal
Isotype	Rabbit Ig
Antigen Region	300-329

AFP Antibody (Center) - Additional Information

Gene ID 174

Other Names

Alpha-fetoprotein, Alpha-1-fetoprotein,
Alpha-fetoglobulin, AFP, HPAFP

Target/Specificity

This AFP antibody is generated from rabbits immunized with a KLH conjugated synthetic peptide between 300-329 amino acids from the Central region of human AFP.

Dilution

WB~~1:1000
IHC-P~~1:10~50

Format

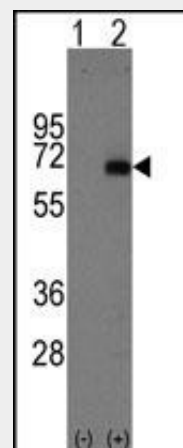
Purified polyclonal antibody supplied in PBS with 0.09% (W/V) sodium azide. This antibody is purified through a protein A column, followed by peptide affinity purification.

Storage

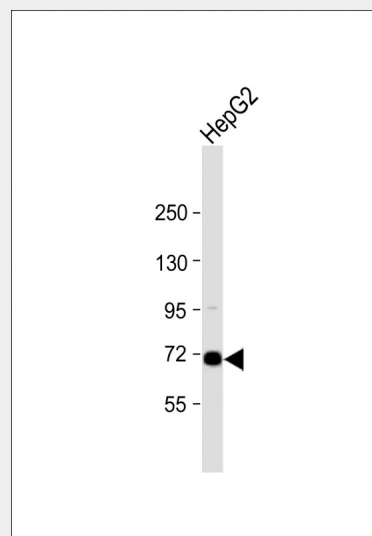
Maintain refrigerated at 2-8°C for up to 2 weeks. For long term storage store at -20°C in small aliquots to prevent freeze-thaw cycles.

Precautions

AFP Antibody (Center) is for research use only and not for use in diagnostic or therapeutic procedures.



Western blot analysis of AFP (arrow) using rabbit polyclonal AFP Antibody (Center) (Cat.#AP1430c). 293 cell lysates (2 ug/lane) either nontransfected (Lane 1) or transiently transfected with the AFP gene (Lane 2) (Origene Technologies).



Anti-AFP Antibody (Center) at 1:1000 dilution + HepG2 whole cell lysate Lysates/proteins at 20 µg per lane. Secondary Goat Anti-Rabbit IgG, (H+L), Peroxidase conjugated at 1/10000 dilution. Predicted band size : 69 kDa
Blocking/Dilution buffer: 5% NFDM/TBST.

AFP Antibody (Center) - Protein Information

Name AFP

Synonyms HPAFP

Function

Binds copper, nickel, and fatty acids as well as, and bilirubin less well than, serum albumin. Only a small percentage (less than 2%) of the human AFP shows estrogen-binding properties.

Cellular Location

Secreted.

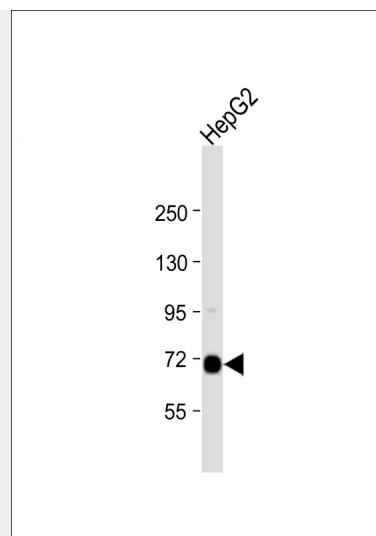
Tissue Location

Plasma. Synthesized by the fetal liver and yolk sac

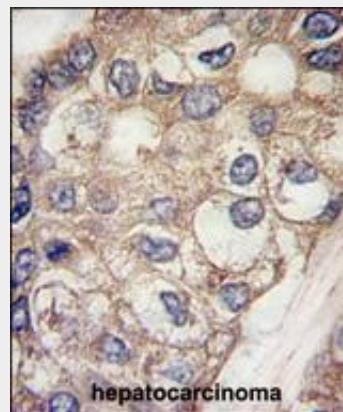
AFP Antibody (Center) - Protocols

Provided below are standard protocols that you may find useful for product applications.

- [Western Blot](#)
- [Blocking Peptides](#)
- [Dot Blot](#)
- [Immunohistochemistry](#)
- [Immunofluorescence](#)
- [Immunoprecipitation](#)
- [Flow Cytometry](#)
- [Cell Culture](#)



Anti-AFP Antibody (Center) at 1:1000 dilution + HepG2 whole cell lysate Lysates/proteins at 20 µg per lane. Secondary Goat Anti-Rabbit IgG, (H+L), Peroxidase conjugated at 1/10000 dilution. Predicted band size : 69 kDa
Blocking/Dilution buffer: 5% NFDM/TBST.



Formalin-fixed and paraffin-embedded human hepatocarcinoma tissue reacted with AFP antibody (Center) (Cat.#AP1430c), which was peroxidase-conjugated to the secondary antibody, followed by DAB staining. This data demonstrates the use of this antibody for immunohistochemistry; clinical relevance has not been evaluated.

AFP Antibody (Center) - Background

Alpha-fetoprotein (AFP) is a major plasma protein produced by the yolk sac and the liver during fetal life. Alpha-fetoprotein expression in adults is often associated with hepatoma or teratoma. However, hereditary persistence of alpha-fetoprotein may also be found in individuals with no obvious pathology. The

protein is thought to be the fetal counterpart of serum albumin, and the alpha-fetoprotein and albumin genes are present in tandem in the same transcriptional orientation on chromosome 4. Alpha-fetoprotein is found in monomeric as well as dimeric and trimeric forms, and binds copper, nickel, fatty acids and bilirubin. The level of alpha-fetoprotein in amniotic fluid is used to measure renal loss of protein to screen for spina bifida and anencephaly.

AFP Antibody (Center) - References

Yamashita,T., Cancer Res. 68 (5), 1451-1461 (2008)
Chen,G.G., Eur J Surg Oncol 33 (7), 882-886 (2007)
Cajaiba,M.M., Pediatr. Dev. Pathol. 10 (3), 233-238 (2007)