

Mouse Adck2 Antibody (Center)
Affinity Purified Rabbit Polyclonal Antibody (Pab)
Catalog # AP14608c

Specification

Mouse Adck2 Antibody (Center) - Product Information

Application	WB,E
Primary Accession	Q6NSR3
Other Accession	NP_849204.1
Reactivity	Mouse
Host	Rabbit
Clonality	Polyclonal
Isotype	Rabbit Ig
Calculated MW	68677
Antigen Region	232-259

Mouse Adck2 Antibody (Center) - Additional Information

Gene ID 57869

Other Names

Uncharacterized aarF domain-containing protein kinase 2, 2711-, Adck2

Target/Specificity

This Mouse Adck2 antibody is generated from rabbits immunized with a KLH conjugated synthetic peptide between 232-259 amino acids from the Central region of mouse Adck2.

Dilution

WB~~1:1000

Format

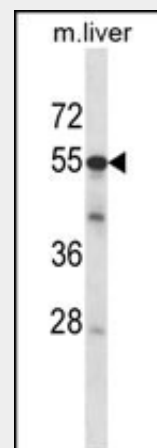
Purified polyclonal antibody supplied in PBS with 0.09% (W/V) sodium azide. This antibody is purified through a protein A column, followed by peptide affinity purification.

Storage

Maintain refrigerated at 2-8°C for up to 2 weeks. For long term storage store at -20°C in small aliquots to prevent freeze-thaw cycles.

Precautions

Mouse Adck2 Antibody (Center) is for



Mouse Adck2 Antibody (Center) (Cat. #AP14608c) western blot analysis in mouse liver tissue lysates (35ug/lane). This demonstrates the Adck2 antibody detected the Adck2 protein (arrow).

Mouse Adck2 Antibody (Center) - Background

The function of this protein is not yet clear. It is not known if it has protein kinase activity and what type of substrate it would phosphorylate (Ser, Thr or Tyr).

Mouse Adck2 Antibody (Center) - References

Pagliarini, D.J., et al. Cell 134(1):112-123(2008)
Zambrowicz, B.P., et al. Proc. Natl. Acad. Sci. U.S.A. 100(24):14109-14114(2003)

research use only and not for use in
diagnostic or therapeutic procedures.

**Mouse Adck2 Antibody (Center) - Protein
Information**

Name Adck2

Function

The function of this protein is not yet clear.
It is not known if it has protein kinase
activity and what type of substrate it would
phosphorylate (Ser, Thr or Tyr).

Cellular Location

Membrane; Single-pass membrane protein

**Mouse Adck2 Antibody (Center) -
Protocols**

Provided below are standard protocols that you
may find useful for product applications.

- [Western Blot](#)
- [Blocking Peptides](#)
- [Dot Blot](#)
- [Immunohistochemistry](#)
- [Immunofluorescence](#)
- [Immunoprecipitation](#)
- [Flow Cytometry](#)
- [Cell Culture](#)