

**NDRG2 Antibody (N-term)**  
**Affinity Purified Rabbit Polyclonal Antibody (Pab)**  
**Catalog # AP14742A**

**Specification**

**NDRG2 Antibody (N-term) - Product Information**

Application	WB,E
Primary Accession	<a href="#">Q9UN36</a>
Other Accession	<a href="#">Q4R4K0</a> , <a href="#">Q3ZBA8</a> , <a href="#">NP_963833.1</a> , <a href="#">NP_963831.1</a> , <a href="#">NP_963834.1</a>
Reactivity	Human
Predicted	Bovine, Monkey
Host	Rabbit
Clonality	Polyclonal
Isotype	Rabbit Ig
Calculated MW	40798
Antigen Region	42-70

**NDRG2 Antibody (N-term) - Additional Information**

**Gene ID** 57447

**Other Names**

Protein NDRG2, N-myc downstream-regulated gene 2 protein, Protein Syld709613, NDRG2, KIAA1248, SYLD

**Target/Specificity**

This NDRG2 antibody is generated from rabbits immunized with a KLH conjugated synthetic peptide between 42-70 amino acids from the N-terminal region of human NDRG2.

**Dilution**

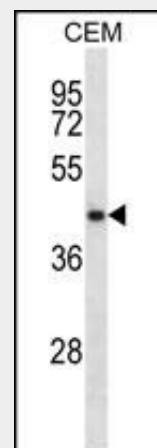
WB~~1:1000

**Format**

Purified polyclonal antibody supplied in PBS with 0.09% (W/V) sodium azide. This antibody is purified through a protein A column, followed by peptide affinity purification.

**Storage**

Maintain refrigerated at 2-8°C for up to 2 weeks. For long term storage store at -20°C



NDRG2 Antibody (N-term) (Cat. #AP14742a) western blot analysis in CEM cell line lysates (35ug/lane). This demonstrates the NDRG2 antibody detected the NDRG2 protein (arrow).

**NDRG2 Antibody (N-term) - Background**

This gene is a member of the N-myc downregulated gene family which belongs to the alpha/beta hydrolase superfamily. The protein encoded by this gene is a cytoplasmic protein that may play a role in neurite outgrowth. This gene may be involved in glioblastoma carcinogenesis. Several alternatively spliced transcript variants of this gene have been described, but the full-length nature of some of these variants has not been determined.

**NDRG2 Antibody (N-term) - References**

Liu, J., et al. Exp. Cell Res. 316(12):1985-1993(2010)  
Choi, S.C., et al. Biochem. Biophys. Res. Commun. 396(3):684-690(2010)  
Shi, H., et al. Cancer Sci.

in small aliquots to prevent freeze-thaw cycles.

**Precautions**

NDRG2 Antibody (N-term) is for research use only and not for use in diagnostic or therapeutic procedures.

101(5):1292-1299(2010)

Tschan, M.P., et al. Leuk. Res.

34(3):393-398(2010)

Furuta, H., et al. Biochem. Biophys. Res.

Commun. 391(4):1785-1791(2010)

**NDRG2 Antibody (N-term) - Protein Information**

**Name** NDRG2

**Synonyms** KIAA1248, SYLD

**Function**

Contributes to the regulation of the Wnt signaling pathway. Down-regulates CTNNB1-mediated transcriptional activation of target genes, such as CCND1, and may thereby act as tumor suppressor. May be involved in dendritic cell and neuron differentiation.

**Cellular Location**

Cytoplasm. Cytoplasm, perinuclear region. Cell projection, growth cone. Note=In neurons, seems to concentrate at axonal growth cone. Perinuclear in neurons (By similarity).

**Tissue Location**

Highly expressed in brain, heart, skeletal muscle and salivary gland, and moderately in kidney and liver. Expressed in dendritic cells, but not in other blood cells. Expression levels are low in pancreatic and liver cancer tissues; absent in meningioma. Expressed in low-grade gliomas but present at low levels in glioblastoma. Isoform 1 and isoform 2 are present in brain neurons and up-regulated in Alzheimer disease (at protein level)

**NDRG2 Antibody (N-term) - Protocols**

Provided below are standard protocols that you may find useful for product applications.

- [Western Blot](#)
- [Blocking Peptides](#)
- [Dot Blot](#)
- [Immunohistochemistry](#)
- [Immunofluorescence](#)
- [Immunoprecipitation](#)

- [Flow Cytometry](#)
- [Cell Culture](#)