

PTPN14 Antibody (C-term)
Affinity Purified Rabbit Polyclonal Antibody (Pab)
Catalog # AP14810b

Specification

PTPN14 Antibody (C-term) - Product Information

Application	WB,E
Primary Accession	Q15678
Other Accession	NP_005392.2
Reactivity	Mouse
Host	Rabbit
Clonality	Polyclonal
Isotype	Rabbit Ig
Calculated MW	135261
Antigen Region	862-890

PTPN14 Antibody (C-term) - Additional Information

Gene ID 5784

Other Names

Tyrosine-protein phosphatase non-receptor type 14, Protein-tyrosine phosphatase pez, PTPN14, PEZ, PTPD2

Target/Specificity

This PTPN14 antibody is generated from rabbits immunized with a KLH conjugated synthetic peptide between 862-890 amino acids from the C-terminal region of human PTPN14.

Dilution

WB~~1:1000

Format

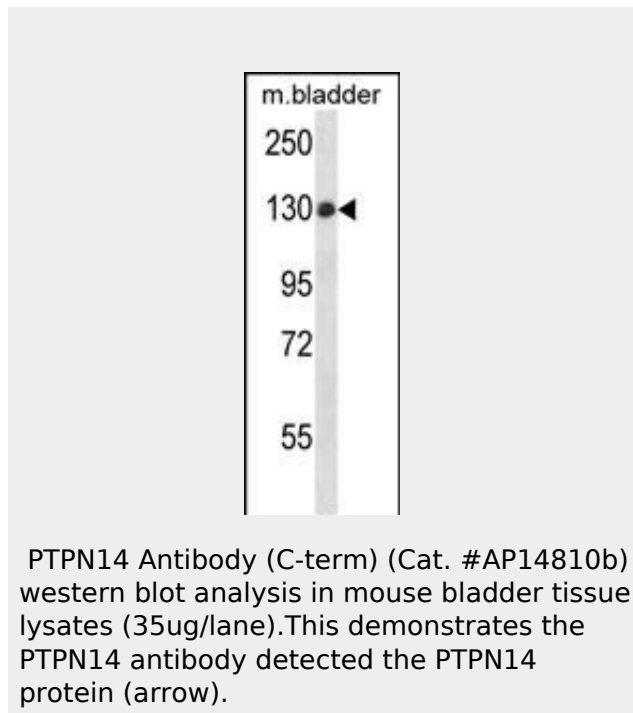
Purified polyclonal antibody supplied in PBS with 0.09% (W/V) sodium azide. This antibody is purified through a protein A column, followed by peptide affinity purification.

Storage

Maintain refrigerated at 2-8°C for up to 2 weeks. For long term storage store at -20°C in small aliquots to prevent freeze-thaw cycles.

Precautions

PTPN14 Antibody (C-term) is for research



PTPN14 Antibody (C-term) - Background

The protein encoded by this gene is a member of the protein tyrosine phosphatase (PTP) family. PTPs are known to be signaling molecules that regulate a variety of cellular processes including cell growth, differentiation, mitotic cycle, and oncogenic transformation. This PTP contains an N-terminal noncatalytic domain similar to that of band 4.1 superfamily cytoskeleton-associated proteins, which suggested the membrane or cytoskeleton localization of this protein. It appears to regulate lymphatic development in mammals, and a loss of function mutation has been found in a kindred with a lymphedema-choanal atresia.

PTPN14 Antibody (C-term) - References

use only and not for use in diagnostic or therapeutic procedures.

PTPN14 Antibody (C-term) - Protein Information

Name PTPN14

Synonyms PEZ, PTPD2

Function

Protein tyrosine phosphatase which may play a role in the regulation of lymphangiogenesis, cell-cell adhesion, cell-matrix adhesion, cell migration, cell growth and also regulates TGF-beta gene expression, thereby modulating epithelial-mesenchymal transition. Mediates beta-catenin dephosphorylation at adhesion junctions. Acts as a negative regulator of the oncogenic property of YAP, a downstream target of the hippo pathway, in a cell density-dependent manner. May function as a tumor suppressor.

Cellular Location

Cytoplasm. Cytoplasm, cytoskeleton. Nucleus. Note=Translocation into the nucleus is associated with induction of cell proliferation. Partially colocalized with actin filaments at the plasma membrane

Tissue Location

Ubiquitous.

Au, A.C., et al. Am. J. Hum. Genet. 87(3):436-444(2010)
Rose, J.E., et al. Mol. Med. 16 (7-8), 247-253 (2010) :
Wyatt, L., et al. Cell Cycle 7(15):2290-2295(2008)
Matsuoka, S., et al. Science 316(5828):1160-1166(2007)
Olsen, J.V., et al. Cell 127(3):635-648(2006)

PTPN14 Antibody (C-term) - Protocols

Provided below are standard protocols that you may find useful for product applications.

- [Western Blot](#)
- [Blocking Peptides](#)
- [Dot Blot](#)
- [Immunohistochemistry](#)
- [Immunofluorescence](#)
- [Immunoprecipitation](#)
- [Flow Cytometry](#)
- [Cell Culture](#)