

SDR16C5 Antibody (Center)
Affinity Purified Rabbit Polyclonal Antibody (Pab)
Catalog # AP14895c

Specification

SDR16C5 Antibody (Center) - Product Information

Application	WB,E
Primary Accession	Q8N3Y7
Other Accession	NP_620419.2
Reactivity	Human
Host	Rabbit
Clonality	Polyclonal
Isotype	Rabbit Ig
Calculated MW	34095
Antigen Region	123-151

SDR16C5 Antibody (Center) - Additional Information

Gene ID 195814

Other Names

Epidermal retinol dehydrogenase 2, EPHD-2, RDH-E2, Retinal short-chain dehydrogenase reductase 2, retSDR2, Short-chain dehydrogenase/reductase family 16C member 5, SDR16C5, RDHE2

Target/Specificity

This SDR16C5 antibody is generated from rabbits immunized with a KLH conjugated synthetic peptide between 123-151 amino acids from the Central region of human SDR16C5.

Dilution

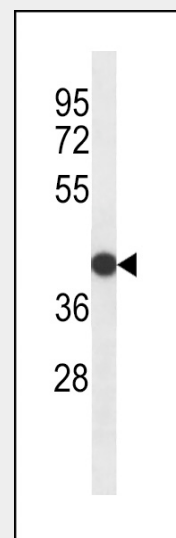
WB~~1:1000

Format

Purified polyclonal antibody supplied in PBS with 0.09% (W/V) sodium azide. This antibody is purified through a protein A column, followed by peptide affinity purification.

Storage

Maintain refrigerated at 2-8°C for up to 2 weeks. For long term storage store at -20°C in small aliquots to prevent freeze-thaw cycles.



SDR16C5 Antibody (Center) (Cat. #AP14895c) western blot analysis in HepG2 cell line lysates (35ug/lane). This demonstrates the SDR16C5 antibody detected the SDR16C5 protein (arrow).

SDR16C5 Antibody (Center) - Background

RDHE2 belongs to a family of short-chain alcohol dehydrogenases/reductases that catalyze the first and rate-limiting step that generates retinaldehyde from retinol (Matsuzaka et al., 2002 [PubMed 12372410]).

SDR16C5 Antibody (Center) - References

Rose, J.E., et al. Mol. Med. 16 (7-8), 247-253 (2010) :
Zhao, J., et al. BMC Med. Genet. 11, 96 (2010) :
Takahashi, Y., et al. Biochem. J. 419(1):113-122(2009)
Soranzo, N., et al. PLoS Genet. 5 (4), E1000445 (2009) :
Lee, S.A., et al. Chem. Biol. Interact. 178 (1-3), 182-187 (2009) :

Precautions

SDR16C5 Antibody (Center) is for research use only and not for use in diagnostic or therapeutic procedures.

SDR16C5 Antibody (Center) - Protein Information

Name SDR16C5

Synonyms RDHE2

Function

Oxidoreductase with strong preference for NAD. Active in both the oxidative and reductive directions. Oxidizes all-trans-retinol in all-trans-retinaldehyde. No activity was detected with 11-cis-retinol or 11-cis-retinaldehyde as substrates with either NAD(+)/NADH or NADP(+)/NADPH.

Cellular Location

Endoplasmic reticulum membrane;
Multi-pass membrane protein

Tissue Location

Detected in adult lung. Detected at low levels in adult brain, heart, testis, placenta, cervix, pancreas, uterus, stomach, rectum, small intestine, colon, esophagus, thymus, skin, and skin keratinocyte. Expression is higher in psoriasis lesions relative to unaffected skin from psoriasis patients. Detected in fetal kidney, skin and lung.

SDR16C5 Antibody (Center) - Protocols

Provided below are standard protocols that you may find useful for product applications.

- [Western Blot](#)
- [Blocking Peptides](#)
- [Dot Blot](#)
- [Immunohistochemistry](#)
- [Immunofluorescence](#)
- [Immunoprecipitation](#)
- [Flow Cytometry](#)
- [Cell Culture](#)