

**CD19 Antibody (C-term)**  
**Affinity Purified Rabbit Polyclonal Antibody (Pab)**  
**Catalog # AP1494b**

**Specification**

**CD19 Antibody (C-term) - Product Information**

Application	<b>WB,E</b>
Primary Accession	<a href="#">P15391</a>
Reactivity	<b>Human</b>
Host	<b>Rabbit</b>
Clonality	<b>Polyclonal</b>
Isotype	<b>Rabbit Ig</b>
Antigen Region	<b>393-421</b>

**CD19 Antibody (C-term) - Additional Information**

**Gene ID 930**

**Other Names**

B-lymphocyte antigen CD19, B-lymphocyte surface antigen B4, Differentiation antigen CD19, T-cell surface antigen Leu-12, CD19, CD19

**Target/Specificity**

This CD19 antibody is generated from rabbits immunized with a KLH conjugated synthetic peptide between 393-421 amino acids from the C-terminal region of human CD19.

**Dilution**

WB~~1:1000

**Format**

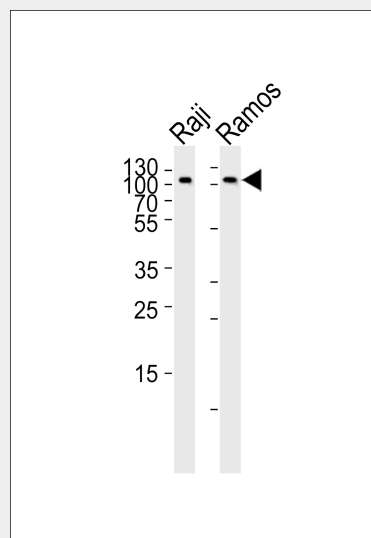
Purified polyclonal antibody supplied in PBS with 0.09% (W/V) sodium azide. This antibody is purified through a protein A column, followed by peptide affinity purification.

**Storage**

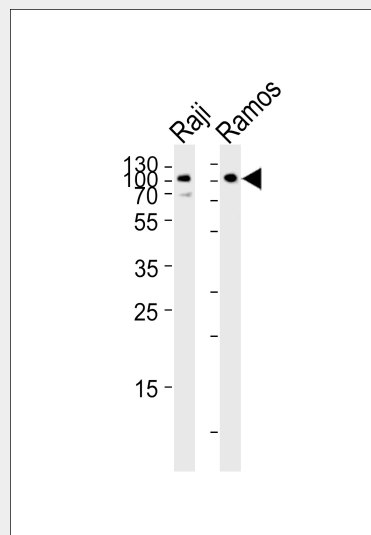
Maintain refrigerated at 2-8°C for up to 2 weeks. For long term storage store at -20°C in small aliquots to prevent freeze-thaw cycles.

**Precautions**

CD19 Antibody (C-term) is for research use only and not for use in diagnostic or therapeutic procedures.



Western blot analysis of lysates from Raji, Ramos cell line (from left to right), using CD19 Antibody (C-term)(Cat. #AP1494b). AP1494b was diluted at 1:1000 at each lane. A goat anti-rabbit IgG H&L(HRP) at 1:5000 dilution was used as the secondary antibody. Lysates at 35ug per lane.



Western blot analysis of lysates from Raji, Ramos cell line (from left to right), using CD19 Antibody (C-term)(Cat. #AP1494b). AP1494b was diluted at 1:1000 at each lane.

**CD19 Antibody (C-term) - Protein Information****Name** CD19**Function**

Functions as coreceptor for the B-cell antigen receptor complex (BCR) on B-lymphocytes. Decreases the threshold for activation of downstream signaling pathways and for triggering B-cell responses to antigens (PubMed:<a href="http://www.uniprot.org/citations/2463100" target="\_blank">2463100</a>, PubMed:<a href="http://www.uniprot.org/citations/1373518" target="\_blank">1373518</a>, PubMed:<a href="http://www.uniprot.org/citations/16672701" target="\_blank">16672701</a>). Activates signaling pathways that lead to the activation of phosphatidylinositol 3-kinase and the mobilization of intracellular Ca(2+) stores (PubMed:<a href="http://www.uniprot.org/citations/9382888" target="\_blank">9382888</a>, PubMed:<a href="http://www.uniprot.org/citations/9317126" target="\_blank">9317126</a>, PubMed:<a href="http://www.uniprot.org/citations/12387743" target="\_blank">12387743</a>, PubMed:<a href="http://www.uniprot.org/citations/16672701" target="\_blank">16672701</a>). Is not required for early steps during B cell differentiation in the blood marrow (PubMed:<a href="http://www.uniprot.org/citations/9317126" target="\_blank">9317126</a>). Required for normal differentiation of B-1 cells (By similarity). Required for normal B cell differentiation and proliferation in response to antigen challenges (PubMed:<a href="http://www.uniprot.org/citations/2463100" target="\_blank">2463100</a>, PubMed:<a href="http://www.uniprot.org/citations/1373518" target="\_blank">1373518</a>). Required for normal levels of serum immunoglobulins, and for production of high-affinity antibodies in response to antigen challenge (PubMed:<a href="http://www.uniprot.org/citations/9317126" target="\_blank">9317126</a>, PubMed:<a href="http://www.uniprot.org/citations/12387743" target="\_blank">12387743</a>).

A goat anti-rabbit IgG H&L(HRP) at 1:5000 dilution was used as the secondary antibody. Lysates at 35ug per lane.

**CD19 Antibody (C-term) - Background**

Lymphocytes proliferate and differentiate in response to various concentrations of different antigens. The ability of the B cell to respond in a specific, yet sensitive manner to the various antigens is achieved with the use of low-affinity antigen receptors. CD19 is a cell surface molecule which assembles with the antigen receptor of B lymphocytes in order to decrease the threshold for antigen receptor-dependent stimulation.

**CD19 Antibody (C-term) - References**

Deaglio,S., Blood 109 (12), 5390-5398 (2007)  
Bradbury,L.E., J. Immunol. 149 (9), 2841-2850 (1992)  
Kozmik,Z., Mol. Cell. Biol. 12 (6), 2662-2672 (1992)

target="\_blank">12387743</a>,  
PubMed:<a href="http://www.uniprot.org/ci  
tations/16672701"  
target="\_blank">16672701</a>).

**Cellular Location**

Cell membrane; Single-pass type I  
membrane protein. Membrane raft  
{ECO:0000250|UniProtKB:P25918};  
Single-pass type I membrane protein  
{ECO:0000250|UniProtKB:P25918}

**Tissue Location**

Detected on marginal zone and germinal  
center B cells in lymph nodes  
(PubMed:2463100). Detected on blood B  
cells (at protein level) (PubMed:2463100,  
PubMed:16672701)

**CD19 Antibody (C-term) - Protocols**

Provided below are standard protocols that you  
may find useful for product applications.

- [Western Blot](#)
- [Blocking Peptides](#)
- [Dot Blot](#)
- [Immunohistochemistry](#)
- [Immunofluorescence](#)
- [Immunoprecipitation](#)
- [Flow Cytometry](#)
- [Cell Culture](#)