

Mouse Cdk13 Antibody (N-term)
Affinity Purified Rabbit Polyclonal Antibody (Pab)
Catalog # AP14952a

Specification

Mouse Cdk13 Antibody (N-term) - Product Information

Application	WB,E
Primary Accession	Q69ZA1
Reactivity	Mouse
Host	Rabbit
Clonality	Polyclonal
Isotype	Rabbit Ig
Antigen Region	282-310

Mouse Cdk13 Antibody (N-term) - Additional Information

Gene ID 69562

Other Names

Cyclin-dependent kinase 13, CDC2-related protein kinase 5, Cell division cycle 2-like protein kinase 5, Cell division protein kinase 13, Cdk13, Cdc2l5, Kiaa1791

Target/Specificity

This Mouse Cdk13 antibody is generated from rabbits immunized with a KLH conjugated synthetic peptide between 282-310 amino acids from the N-terminal region of mouse Cdk13.

Dilution

WB~~1:2000

Format

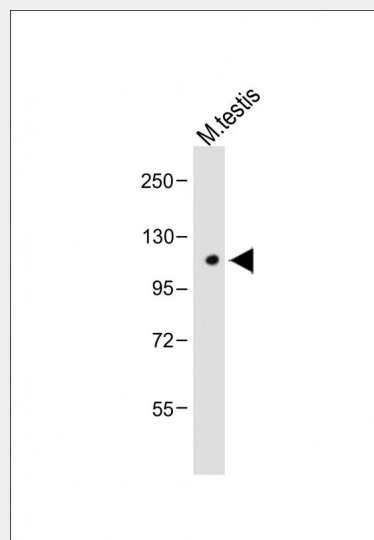
Purified polyclonal antibody supplied in PBS with 0.09% (W/V) sodium azide. This antibody is purified through a protein A column, followed by peptide affinity purification.

Storage

Maintain refrigerated at 2-8°C for up to 2 weeks. For long term storage store at -20°C in small aliquots to prevent freeze-thaw cycles.

Precautions

Mouse Cdk13 Antibody (N-term) is for



Anti-Mouse Cdk13 Antibody (N-term) at 1:2000 dilution + Mouse testis whole tissue lysate Lysates/proteins at 20 µg per lane. Secondary Goat Anti-Rabbit IgG, (H+L), Peroxidase conjugated at 1/10000 dilution. Predicted band size : 165 kDa
Blocking/Dilution buffer: 5% NFDM/TBST.

Mouse Cdk13 Antibody (N-term) - Background

Cdk13 may be a controller of the mitotic cell cycle. Involved in the blood cell development (By similarity).

research use only and not for use in
diagnostic or therapeutic procedures.

**Mouse Cdk13 Antibody (N-term) - Protein
Information**

Name Cdk13

Synonyms Cdc2l5, Kiaa1791

Function

Cyclin-dependent kinase which displays CTD kinase activity and is required for RNA splicing. Has CTD kinase activity by hyperphosphorylating the C-terminal heptapeptide repeat domain (CTD) of the largest RNA polymerase II subunit RPB1, thereby acting as a key regulator of transcription elongation. Required for RNA splicing, probably by phosphorylating SRSF1/SF2. Required during hematopoiesis.

Cellular Location

Nucleus speckle.

**Mouse Cdk13 Antibody (N-term) -
Protocols**

Provided below are standard protocols that you
may find useful for product applications.

- [Western Blot](#)
- [Blocking Peptides](#)
- [Dot Blot](#)
- [Immunohistochemistry](#)
- [Immunofluorescence](#)
- [Immunoprecipitation](#)
- [Flow Cytometry](#)
- [Cell Culture](#)