

**CDH3 Antibody (C-term)**  
**Affinity Purified Rabbit Polyclonal Antibody (Pab)**  
**Catalog # AP1499B**

**Specification**

**CDH3 Antibody (C-term) - Product Information**

Application	<b>WB, IHC-P,E</b>
Primary Accession	<a href="#">P22223</a>
Reactivity	<b>Human</b>
Host	<b>Rabbit</b>
Clonality	<b>Polyclonal</b>
Isotype	<b>Rabbit Ig</b>
Antigen Region	<b>660-688</b>

**CDH3 Antibody (C-term) - Additional Information**

**Gene ID** 1001

**Other Names**

Cadherin-3, Placental cadherin, P-cadherin, CDH3, CDHP

**Target/Specificity**

This CDH3 antibody is generated from rabbits immunized with a KLH conjugated synthetic peptide between 660-688 amino acids from the C-terminal region of human CDH3.

**Dilution**

WB~~1:1000  
IHC-P~~1:10~50

**Format**

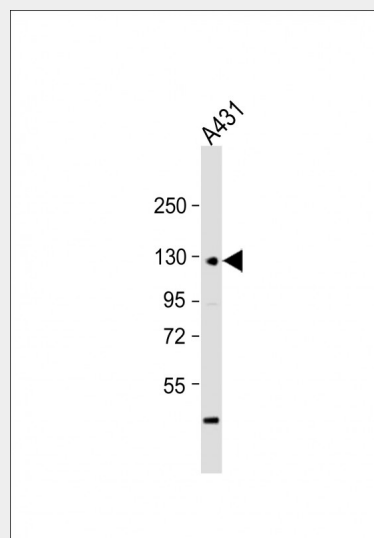
Purified polyclonal antibody supplied in PBS with 0.09% (W/V) sodium azide. This antibody is purified through a protein A column, followed by peptide affinity purification.

**Storage**

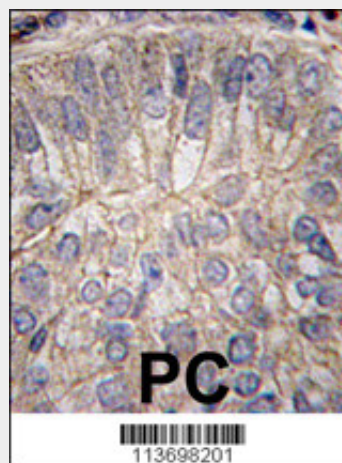
Maintain refrigerated at 2-8°C for up to 2 weeks. For long term storage store at -20°C in small aliquots to prevent freeze-thaw cycles.

**Precautions**

CDH3 Antibody (C-term) is for research use only and not for use in diagnostic or therapeutic procedures.



Anti-CDH3 Antibody (C-term) at 1:1000 dilution + A431 whole cell lysate  
Lysates/proteins at 20 µg per lane.  
Secondary Goat Anti-Rabbit IgG, (H+L), Peroxidase conjugated at 1/10000 dilution.  
Predicted band size : 91 kDa  
Blocking/Dilution buffer: 5% NFDM/TBST.



Formalin-fixed and paraffin-embedded human prostate carcinoma tissue reacted with CDH3 antibody (C-term) (Cat.#AP1499b), which was peroxidase-conjugated to the secondary antibody, followed by DAB staining. This data

**CDH3 Antibody (C-term) - Protein Information****Name** CDH3**Synonyms** CDHP**Function**

Cadherins are calcium-dependent cell adhesion proteins. They preferentially interact with themselves in a homophilic manner in connecting cells; cadherins may thus contribute to the sorting of heterogeneous cell types.

**Cellular Location**

Cell membrane; Single-pass type I membrane protein

**Tissue Location**

Expressed in some normal epithelial tissues and in some carcinoma cell lines.

**CDH3 Antibody (C-term) - Protocols**

Provided below are standard protocols that you may find useful for product applications.

- [Western Blot](#)
- [Blocking Peptides](#)
- [Dot Blot](#)
- [Immunohistochemistry](#)
- [Immunofluorescence](#)
- [Immunoprecipitation](#)
- [Flow Cytometry](#)
- [Cell Culture](#)

demonstrates the use of this antibody for immunohistochemistry; clinical relevance has not been evaluated.

**CDH3 Antibody (C-term) - Background**

CDH3 is a classical cadherin from the cadherin superfamily. It is a calcium-dependent cell-cell adhesion glycoprotein comprised of five extracellular cadherin repeats, a transmembrane region and a highly conserved cytoplasmic tail. Aberrant expression of this protein is observed in cervical adenocarcinomas. Mutations in the gene encoding CDH3 have been associated with congenital hypotrichosis with juvenile macular dystrophy.

**CDH3 Antibody (C-term) - References**

Indelman,M., Clin. Exp. Dermatol. 32 (2), 191-196 (2007)  
Paredes,J., Clin. Cancer Res. 11 (16), 5869-5877 (2005)