

**TRAF4 Antibody (C-term)**  
**Affinity Purified Rabbit Polyclonal Antibody (Pab)**  
**Catalog # AP16059b**

**Specification**

**TRAF4 Antibody (C-term) - Product Information**

Application	WB,E
Primary Accession	<a href="#">O9BUZ4</a>
Other Accession	<a href="#">O61382</a> , <a href="#">NP_004286.2</a>
Reactivity	Human
Predicted	Mouse
Host	Rabbit
Clonality	Polyclonal
Isotype	Rabbit Ig
Calculated MW	53543
Antigen Region	427-455

**TRAF4 Antibody (C-term) - Additional Information**

**Gene ID** 9618

**Other Names**

TNF receptor-associated factor 4, Cysteine-rich domain associated with RING and Traf domains protein 1, Metastatic lymph node gene 62 protein, MLN 62, RING finger protein 83, TRAF4, CART1, MLN62, RNF83

**Target/Specificity**

This TRAF4 antibody is generated from rabbits immunized with a KLH conjugated synthetic peptide between 427-455 amino acids from the C-terminal region of human TRAF4.

**Dilution**

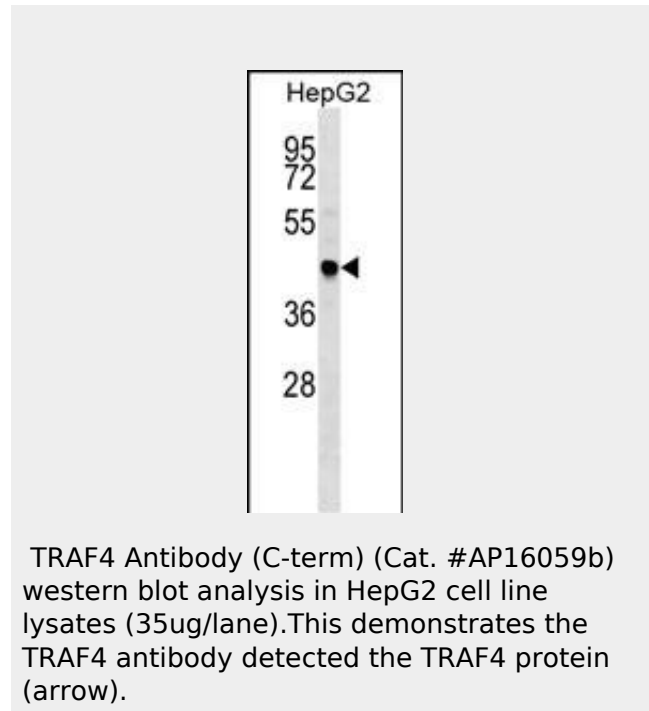
WB~~1:1000

**Format**

Purified polyclonal antibody supplied in PBS with 0.09% (W/V) sodium azide. This antibody is purified through a protein A column, followed by peptide affinity purification.

**Storage**

Maintain refrigerated at 2-8°C for up to 2 weeks. For long term storage store at -20°C in small aliquots to prevent freeze-thaw



**TRAF4 Antibody (C-term) - Background**

This gene encodes a member of the TNF receptor associated factor (TRAF) family. TRAF proteins are associated with, and mediate signal transduction from members of the TNF receptor superfamily. The encoded protein has been shown to interact with neurotrophin receptor, p75 (NTR/NTSR1), and negatively regulate NTR induced cell death and NF-kappa B activation. This protein has been found to bind to p47phox, a cytosolic regulatory factor included in a multi-protein complex known as NAD(P)H oxidase. This protein thus, is thought to be involved in the oxidative activation of MAPK8/JNK. Alternatively spliced transcript variants have been observed but the full-length nature of only one has been determined.

cycles.

### Precautions

TRAF4 Antibody (C-term) is for research use only and not for use in diagnostic or therapeutic procedures.

### TRAF4 Antibody (C-term) - Protein Information

**Name** TRAF4

**Synonyms** CART1, MLN62, RNF83

### Function

Adapter protein and signal transducer that links members of the tumor necrosis factor receptor (TNFR) family to different signaling pathways. Plays a role in the activation of NF-kappa-B and JNK, and in the regulation of cell survival and apoptosis. Regulates activation of NF-kappa-B in response to signaling through Toll-like receptors. Required for normal skeleton development, and for normal development of the respiratory tract (By similarity). Required for activation of RPS6KB1 in response to TNF signaling. Modulates TRAF6 functions.

### Cellular Location

Cytoplasm. Nucleus. Cytoplasm, perinuclear region. Cell junction, tight junction. Cell membrane; Peripheral membrane protein; Cytoplasmic side. Cytoplasm, cytoskeleton

### Tissue Location

Expressed in epithelial cells of thymus, dendritic cells of lymph node, and in the basal cell layer of epithelia such as epidermis, nasopharynx, respiratory tract, salivary gland, and esophagus.

### TRAF4 Antibody (C-term) - References

Li, S., et al. Mol. Cell. Biochem. 338 (1-2), 11-17 (2010) :  
Davila, S., et al. Genes Immun. 11(3):232-238(2010)  
Segat, L., et al. Vaccine 28(10):2201-2206(2010)  
Albers, H.M., et al. Ann. Rheum. Dis. 67(11):1578-1580(2008)  
Kedinger, V., et al. PLoS ONE 3 (10), E3518 (2008) :

### TRAF4 Antibody (C-term) - Protocols

Provided below are standard protocols that you may find useful for product applications.

- [Western Blot](#)
- [Blocking Peptides](#)
- [Dot Blot](#)
- [Immunohistochemistry](#)
- [Immunofluorescence](#)
- [Immunoprecipitation](#)
- [Flow Cytometry](#)

- [Cell Culture](#)