

LIG3 Antibody (C-term)
Affinity Purified Rabbit Polyclonal Antibody (Pab)
Catalog # AP16089b

Specification

LIG3 Antibody (C-term) - Product Information

Application	WB,E
Primary Accession	P49916
Other Accession	P97386 , NP_039269.2 , NP_002302.2
Reactivity	Human
Predicted	Mouse
Host	Rabbit
Clonality	Polyclonal
Isotype	Rabbit Ig
Calculated MW	112907
Antigen Region	793-822

LIG3 Antibody (C-term) - Additional Information

Gene ID 3980

Other Names

DNA ligase 3, DNA ligase III,
Polydeoxyribonucleotide synthase [ATP] 3,
LIG3

Target/Specificity

This LIG3 antibody is generated from rabbits immunized with a KLH conjugated synthetic peptide between 793-822 amino acids from the C-terminal region of human LIG3.

Dilution

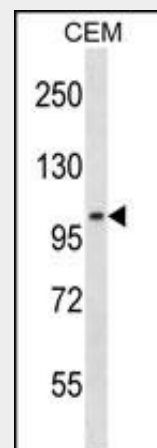
WB~1:1000

Format

Purified polyclonal antibody supplied in PBS with 0.09% (W/V) sodium azide. This antibody is purified through a protein A column, followed by peptide affinity purification.

Storage

Maintain refrigerated at 2-8°C for up to 2 weeks. For long term storage store at -20°C in small aliquots to prevent freeze-thaw cycles.



LIG3 Antibody (C-term) (Cat. #AP16089b) western blot analysis in CEM cell line lysates (35ug/lane). This demonstrates the LIG3 antibody detected the LIG3 protein (arrow).

LIG3 Antibody (C-term) - Background

This gene is a member of the DNA ligase family. Each member of this family encodes a protein that catalyzes the joining of DNA ends but they each have a distinct role in DNA metabolism. The protein encoded by this gene is involved in excision repair and is located in both the mitochondria and nucleus, with translation initiation from the upstream start codon allowing for transport to the mitochondria and translation initiation from a downstream start codon allowing for transport to the nucleus. Additionally, alternate transcriptional splice variants, encoding different isoforms, have been characterized.

LIG3 Antibody (C-term) - References

Wang, W., et al. Nucleic Acids Res. (2010) In press :

Precautions

LIG3 Antibody (C-term) is for research use only and not for use in diagnostic or therapeutic procedures.

LIG3 Antibody (C-term) - Protein Information**Name** LIG3**Function**

Isoform 3 functions as heterodimer with DNA-repair protein XRCC1 in the nucleus and can correct defective DNA strand-break repair and sister chromatid exchange following treatment with ionizing radiation and alkylating agents. Isoform 1 is targeted to mitochondria, where it functions as DNA ligase in mitochondrial base-excision DNA repair (PubMed:<<http://www.uniprot.org/citations/10207110>>10207110, PubMed:<<http://www.uniprot.org/citations/24674627>>24674627).

Cellular Location

[Isoform 1]: Mitochondrion Note=Contains an N-terminal mitochondrial transit peptide
[Isoform 3]: Nucleus. Note=Lacks the N-terminal mitochondrial transit peptide.

Tissue Location

Testis, thymus, prostate and heart.

Arora, M., et al. Leukemia

24(8):1470-1475(2010)

Cotner-Gohara, E., et al. Biochemistry

49(29):6165-6176(2010)

Ho-Pun-Cheung, A., et al. Pharmacogenomics J. (2010) In press :

Briggs, F.B., et al. Am. J. Epidemiol.

172(2):217-224(2010)

LIG3 Antibody (C-term) - Protocols

Provided below are standard protocols that you may find useful for product applications.

- [Western Blot](#)
- [Blocking Peptides](#)
- [Dot Blot](#)
- [Immunohistochemistry](#)
- [Immunofluorescence](#)
- [Immunoprecipitation](#)
- [Flow Cytometry](#)
- [Cell Culture](#)