

**CD86 Antibody (C-term)**  
**Affinity Purified Rabbit Polyclonal Antibody (Pab)**  
**Catalog # AP16101b**

**Specification**

**CD86 Antibody (C-term) - Product Information**

Application	WB,E
Primary Accession	<a href="#">P42081</a>
Other Accession	<a href="#">NP_008820.2</a> , <a href="#">NP_787058.3</a>
Reactivity	Human
Host	Rabbit
Clonality	Polyclonal
Isotype	Rabbit Ig
Antigen Region	269-298

**CD86 Antibody (C-term) - Additional Information**

**Gene ID 942**

**Other Names**

T-lymphocyte activation antigen CD86,  
Activation B7-2 antigen, B70, BU63, CTLA-4  
counter-receptor B72, FUN-1, CD86, CD86,  
CD28LG2

**Target/Specificity**

This CD86 antibody is generated from rabbits immunized with a KLH conjugated synthetic peptide between 269-298 amino acids from the C-terminal region of human CD86.

**Dilution**

WB~~1:1000

**Format**

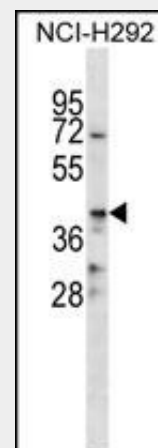
Purified polyclonal antibody supplied in PBS with 0.09% (W/V) sodium azide. This antibody is purified through a protein A column, followed by peptide affinity purification.

**Storage**

Maintain refrigerated at 2-8°C for up to 2 weeks. For long term storage store at -20°C in small aliquots to prevent freeze-thaw cycles.

**Precautions**

CD86 Antibody (C-term) is for research use



CD86 Antibody (C-term) (Cat. #AP16101b) western blot analysis in NCI-H292 cell line lysates (35ug/lane). This demonstrates the CD86 antibody detected the CD86 protein (arrow).

**CD86 Antibody (C-term) - Background**

This gene encodes a type I membrane protein that is a member of the immunoglobulin superfamily. This protein is expressed by antigen-presenting cells, and it is the ligand for two proteins at the cell surface of T cells, CD28 antigen and cytotoxic T-lymphocyte-associated protein 4. Binding of this protein with CD28 antigen is a costimulatory signal for activation of the T-cell. Binding of this protein with cytotoxic T-lymphocyte-associated protein 4 negatively regulates T-cell activation and diminishes the immune response. Alternative splicing results in two transcript variants encoding different isoforms. Additional transcript variants have been described, but their full-length sequences have not been determined. [provided by

only and not for use in diagnostic or therapeutic procedures.

#### **CD86 Antibody (C-term) - Protein Information**

**Name** CD86

**Synonyms** CD28LG2

#### **Function**

Receptor involved in the costimulatory signal essential for T-lymphocyte proliferation and interleukin-2 production, by binding CD28 or CTLA-4. May play a critical role in the early events of T-cell activation and costimulation of naive T-cells, such as deciding between immunity and anergy that is made by T-cells within 24 hours after activation (PubMed:<a href="http://www.uniprot.org/citations/7527824" target="\_blank">7527824</a>). Also involved in the regulation of B cells function, plays a role in regulating the level of IgG(1) produced. Upon CD40 engagement, activates NF-kappa-B signaling pathway via phospholipase C and protein kinase C activation (By similarity).

#### **Cellular Location**

Cell membrane; Single-pass type I membrane protein

#### **Tissue Location**

Expressed by activated B-lymphocytes and monocytes.

RefSeq].

#### **CD86 Antibody (C-term) - References**

Liu, Y., et al. Hum. Immunol. 71(11):1141-1146(2010)  
Bailey, S.D., et al. Diabetes Care 33(10):2250-2253(2010)  
Grujic, M., et al. J. Immunol. 185(3):1730-1743(2010)  
Dalla-Costa, R., et al. Hum. Immunol. 71(8):809-817(2010)  
Schuurhof, A., et al. Pediatr. Pulmonol. 45(6):608-613(2010)

#### **CD86 Antibody (C-term) - Protocols**

Provided below are standard protocols that you may find useful for product applications.

- [Western Blot](#)
- [Blocking Peptides](#)
- [Dot Blot](#)
- [Immunohistochemistry](#)
- [Immunofluorescence](#)
- [Immunoprecipitation](#)
- [Flow Cytometry](#)
- [Cell Culture](#)