

**Mouse Cdk10 Antibody (C-term)**  
**Affinity Purified Rabbit Polyclonal Antibody (Pab)**  
**Catalog # AP16261B**

**Specification**

**Mouse Cdk10 Antibody (C-term) - Product Information**

Application	WB,E
Primary Accession	<a href="#">Q3UMM4</a>
Other Accession	<a href="#">NP_919426.2</a> , <a href="#">NP_919428.1</a>
Reactivity	Human
Host	Rabbit
Clonality	Polyclonal
Isotype	Rabbit Ig
Calculated MW	40961
Antigen Region	287-314

**Mouse Cdk10 Antibody (C-term) - Additional Information**

**Gene ID** 234854

**Other Names**

Cyclin-dependent kinase 10, Cell division protein kinase 10, Cdk10

**Target/Specificity**

This Mouse Cdk10 antibody is generated from rabbits immunized with a KLH conjugated synthetic peptide between 287-314 amino acids from the C-terminal region of mouse Cdk10.

**Dilution**

WB~~1:1000

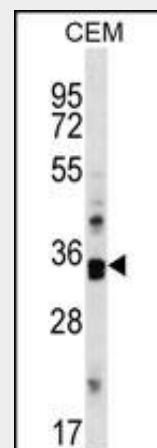
**Format**

Purified polyclonal antibody supplied in PBS with 0.09% (W/V) sodium azide. This antibody is purified through a protein A column, followed by peptide affinity purification.

**Storage**

Maintain refrigerated at 2-8°C for up to 2 weeks. For long term storage store at -20°C in small aliquots to prevent freeze-thaw cycles.

**Precautions**



Mouse Cdk10 Antibody (C-term) (Cat. #AP16261b) western blot analysis in CEM cell line lysates (35ug/lane). This demonstrates the Cdk10 antibody detected the Cdk10 protein (arrow).

**Mouse Cdk10 Antibody (C-term) - Background**

Cdk10 belongs to the CDK (cyclin-dependent kinase) subfamily of the Ser/Thr protein kinase family. The CDK subfamily members are highly similar to the gene products of *S. cerevisiae* cdc28, and *S. pombe* cdc2, and are known to be essential for cell cycle progression. The human ortholog has been shown to play a role in cellular proliferation. Multiple transcript variants encoding different isoforms have been found for this gene. A related pseudogene exists on chromosome 1. [provided by RefSeq].

**Mouse Cdk10 Antibody (C-term) - References**

Bagella, L., et al. J. Cell. Biochem. 99(3):978-985(2006)

Mouse Cdk10 Antibody (C-term) is for research use only and not for use in diagnostic or therapeutic procedures.

Grana, X., et al. Oncogene 9(7):2097-2103(1994)

#### **Mouse Cdk10 Antibody (C-term) - Protein Information**

**Name** Cdk10

#### **Function**

Cyclin-dependent kinase that phosphorylates the transcription factor ETS2 (in vitro) and positively controls its proteasomal degradation (in cells). Involved in the regulation of actin cytoskeleton organization through the phosphorylation of actin dynamics regulators such as PKN2. Is a negative regulator of ciliogenesis through phosphorylation of PKN2 and promotion of RhoA signaling.

#### **Cellular Location**

Cytoplasm, cytoskeleton, cilium basal body  
{ECO:0000250|UniProtKB:Q15131}

#### **Mouse Cdk10 Antibody (C-term) - Protocols**

Provided below are standard protocols that you may find useful for product applications.

- [Western Blot](#)
- [Blocking Peptides](#)
- [Dot Blot](#)
- [Immunohistochemistry](#)
- [Immunofluorescence](#)
- [Immunoprecipitation](#)
- [Flow Cytometry](#)
- [Cell Culture](#)