

SMO Antibody (Center)
Affinity Purified Rabbit Polyclonal Antibody (Pab)
Catalog # AP16325c

Specification

SMO Antibody (Center) - Product Information

Application	WB,E
Primary Accession	Q99835
Other Accession	NP_005622.1
Reactivity	Human
Host	Rabbit
Clonality	Polyclonal
Isotype	Rabbit Ig
Calculated MW	86397
Antigen Region	539-567

SMO Antibody (Center) - Additional Information

Gene ID 6608

Other Names

Smoothed homolog, SMO, Protein Gx, SMO, SMOH

Target/Specificity

This SMO antibody is generated from rabbits immunized with a KLH conjugated synthetic peptide between 539-567 amino acids from the Central region of human SMO.

Dilution

WB~~1:1000

Format

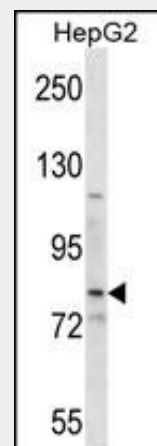
Purified polyclonal antibody supplied in PBS with 0.09% (W/V) sodium azide. This antibody is purified through a protein A column, followed by peptide affinity purification.

Storage

Maintain refrigerated at 2-8°C for up to 2 weeks. For long term storage store at -20°C in small aliquots to prevent freeze-thaw cycles.

Precautions

SMO Antibody (Center) is for research use only and not for use in diagnostic or therapeutic procedures.



SMO Antibody (Center) (Cat. #AP16325c) western blot analysis in HepG2 cell line lysates (35ug/lane). This demonstrates the SMO antibody detected the SMO protein (arrow).

SMO Antibody (Center) - Background

The protein encoded by this gene is a G protein-coupled receptor that interacts with the patched protein, a receptor for hedgehog proteins. The encoded protein transduces signals to other proteins after activation by a hedgehog protein/patched protein complex.

SMO Antibody (Center) - References

Zhang, L., et al. Oral Dis 16(8):818-822(2010)
Desch, P., et al. Oncogene 29(35):4885-4895(2010)
Walter, K., et al. Clin. Cancer Res. 16(6):1781-1789(2010)
Hirotsu, M., et al. Mol. Cancer 9, 5 (2010) :
Rittie, L., et al. Aging Cell 8(6):738-751(2009)

SMO Antibody (Center) - Protein Information**Name** SMO**Synonyms** SMOH**Function**

G protein-coupled receptor that probably associates with the patched protein (PTCH) to transduce the hedgehog's proteins signal. Binding of sonic hedgehog (SHH) to its receptor patched is thought to prevent normal inhibition by patched of smoothened (SMO). Required for the accumulation of KIF7, GLI2 and GLI3 in the cilia (PubMed:19592253). Interacts with DLG5 at the ciliary base to induce the accumulation of KIF7 and GLI2 at the ciliary tip for GLI2 activation (By similarity).

Cellular Location

Membrane; Multi-pass membrane protein.
Cell projection, cilium

SMO Antibody (Center) - Protocols

Provided below are standard protocols that you may find useful for product applications.

- [Western Blot](#)
- [Blocking Peptides](#)
- [Dot Blot](#)
- [Immunohistochemistry](#)
- [Immunofluorescence](#)
- [Immunoprecipitation](#)
- [Flow Cytometry](#)
- [Cell Culture](#)

SMO Antibody (Center) - Citations

- [The sonic hedgehog pathway mediates Tongxinluo capsule-induced protection against blood-brain barrier disruption after ischemic stroke in mice.](#)
- [Dehydroeffusol inhibits viability and epithelial-mesenchymal transition through the Hedgehog and Akt/mTOR signaling pathways in neuroblastoma cells.](#)
- [Salinomycin exerts anticancer effects on human breast carcinoma MCF-7 cancer stem cells via modulation of Hedgehog signaling.](#)