

**KIF18A Antibody (C-term)**  
**Affinity Purified Rabbit Polyclonal Antibody (Pab)**  
**Catalog # AP16406b**

**Specification**

**KIF18A Antibody (C-term) - Product Information**

Application	WB,E
Primary Accession	<a href="#">Q8NI77</a>
Other Accession	<a href="#">NP_112494.3</a>
Reactivity	Human
Host	Rabbit
Clonality	Polyclonal
Isotype	Rabbit Ig
Calculated MW	102281
Antigen Region	644-673

**KIF18A Antibody (C-term) - Additional Information**

**Gene ID** 81930

**Other Names**

Kinesin-like protein KIF18A, Marrow stromal KIF18A, MS-KIF18A, KIF18A

**Target/Specificity**

This KIF18A antibody is generated from rabbits immunized with a KLH conjugated synthetic peptide between 644-673 amino acids from the C-terminal region of human KIF18A.

**Dilution**

WB~~1:1000

**Format**

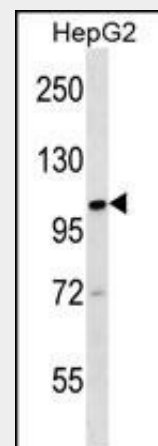
Purified polyclonal antibody supplied in PBS with 0.09% (W/V) sodium azide. This antibody is purified through a protein A column, followed by peptide affinity purification.

**Storage**

Maintain refrigerated at 2-8°C for up to 2 weeks. For long term storage store at -20°C in small aliquots to prevent freeze-thaw cycles.

**Precautions**

KIF18A Antibody (C-term) is for research use only and not for use in diagnostic or



KIF18A Antibody (C-term) (Cat. #AP16406b) western blot analysis in HepG2 cell line lysates (35ug/lane). This demonstrates the KIF18A antibody detected the KIF18A protein (arrow).

**KIF18A Antibody (C-term) - Background**

KIF18A is a member of the kinesin superfamily of microtubule-associated molecular motors (see MIM 148760) that use hydrolysis of ATP to produce force and movement along microtubules (Luboshits and Benayahu, 2005 [PubMed 15878648]). [supplied by OMIM].

**KIF18A Antibody (C-term) - References**

- Zhang, C., et al. Carcinogenesis 31(9):1676-1684(2010)
- Du, Y., et al. Curr. Biol. 20(4):374-380(2010)
- Huang, Y., et al. Cell Cycle 8(16):2643-2649(2009)
- Zusev, M., et al. J. Cell. Physiol. 217(3):618-625(2008)
- Stumpff, J., et al. Dev. Cell 14(2):252-262(2008)

therapeutic procedures.

#### **KIF18A Antibody (C-term) - Protein Information**

**Name** KIF18A

#### **Function**

Microtubule-depolymerizing kinesin which plays a role in chromosome congression by reducing the amplitude of preanaphase oscillations and slowing poleward movement during anaphase, thus suppressing chromosome movements. May stabilize the CENPE-BUB1B complex at the kinetochores during early mitosis and maintains CENPE levels at kinetochores during chromosome congression.

#### **Cellular Location**

Cell projection, ruffle. Cytoplasm. Nucleus. Cytoplasm, cytoskeleton, microtubule organizing center, centrosome

#### **KIF18A Antibody (C-term) - Protocols**

Provided below are standard protocols that you may find useful for product applications.

- [Western Blot](#)
- [Blocking Peptides](#)
- [Dot Blot](#)
- [Immunohistochemistry](#)
- [Immunofluorescence](#)
- [Immunoprecipitation](#)
- [Flow Cytometry](#)
- [Cell Culture](#)