

**ASPSCR1 Antibody (N-term)**  
**Affinity Purified Rabbit Polyclonal Antibody (Pab)**  
**Catalog # AP16506a**

**Specification**

**ASPSCR1 Antibody (N-term) - Product Information**

Application	WB,E
Primary Accession	<a href="#">Q9BZE9</a>
Other Accession	<a href="#">NP_076988.1</a>
Reactivity	Human
Host	Rabbit
Clonality	Polyclonal
Isotype	Rabbit Ig
Calculated MW	60183
Antigen Region	65-93

**ASPSCR1 Antibody (N-term) - Additional Information**

**Gene ID** 79058

**Other Names**

Tether containing UBX domain for GLUT4, Alveolar soft part sarcoma chromosomal region candidate gene 1 protein, Alveolar soft part sarcoma locus, Renal papillary cell carcinoma protein 17, UBX domain-containing protein 9, ASPSCR1, ASPL, RCC17, TUG, UBXD9, UBXN9

**Target/Specificity**

This ASPSCR1 antibody is generated from rabbits immunized with a KLH conjugated synthetic peptide between 65-93 amino acids from the N-terminal region of human ASPSCR1.

**Dilution**

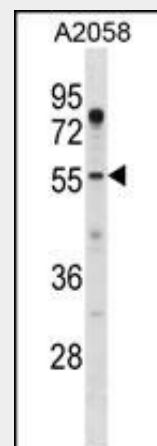
WB~~1:1000

**Format**

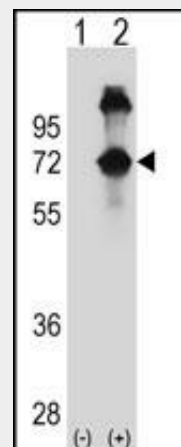
Purified polyclonal antibody supplied in PBS with 0.09% (W/V) sodium azide. This antibody is purified through a protein A column, followed by peptide affinity purification.

**Storage**

Maintain refrigerated at 2-8°C for up to 2 weeks. For long term storage store at -20°C



ASPSCR1 Antibody (N-term) (Cat. #AP16506a) western blot analysis in A2058 cell line lysates (35ug/lane). This demonstrates the ASPSCR1 antibody detected the ASPSCR1 protein (arrow).



Western blot analysis of ASPSCR1 (arrow) using rabbit polyclonal ASPSCR1 Antibody (N-term) (Cat. #AP16506a). 293 cell lysates (2 ug/lane) either nontransfected (Lane 1) or transiently transfected (Lane 2) with the ASPSCR1 gene.

**ASPSCR1 Antibody (N-term) - Background**

This gene is a candidate gene for alveolar soft part

in small aliquots to prevent freeze-thaw cycles.

**Precautions**

ASPSCR1 Antibody (N-term) is for research use only and not for use in diagnostic or therapeutic procedures.

**ASPSCR1 Antibody (N-term) - Protein Information**

**Name** ASPSCR1

**Synonyms** ASPL, RCC17, TUG, UBXD9, UBXN9

**Function**

Tethering protein that sequesters GLUT4-containing vesicles in the cytoplasm in the absence of insulin. Modulates the amount of GLUT4 that is available at the cell surface (By similarity). Enhances VCP methylation catalyzed by VCPKMT.

**Cellular Location**

Endomembrane system; Peripheral membrane protein. Endoplasmic reticulum-Golgi intermediate compartment membrane; Peripheral membrane protein. Cytoplasm Nucleus

**Tissue Location**

Ubiquitous. Highly expressed in testis, heart, skeletal muscle and pancreas.

sarcoma (ASPS). It has been found that this gene is fused with transcription factor TFE3 gene in ASPS and also in renal cell carcinomas. Several alternatively spliced transcript variants of this gene have been described, but their full length nature has not been determined.

**ASPSCR1 Antibody (N-term) - References**

Ban, H.J., et al. BMC Genet. 11, 26 (2010) :  
Alexandru, G., et al. Cell 134(5):804-816(2008)  
Vistica, D.T., et al. J. Pediatr. Hematol. Oncol. 30(1):46-52(2008)  
Olsen, J.V., et al. Cell 127(3):635-648(2006)  
Bogan, J.S., et al. Nature 425(6959):727-733(2003)

**ASPSCR1 Antibody (N-term) - Protocols**

Provided below are standard protocols that you may find useful for product applications.

- [Western Blot](#)
- [Blocking Peptides](#)
- [Dot Blot](#)
- [Immunohistochemistry](#)
- [Immunofluorescence](#)
- [Immunoprecipitation](#)
- [Flow Cytometry](#)
- [Cell Culture](#)