

TSC22D2 Antibody (N-term)
Affinity Purified Rabbit Polyclonal Antibody (Pab)
Catalog # AP16530A

Specification

TSC22D2 Antibody (N-term) - Product Information

Application	IF, WB,E
Primary Accession	O75157
Other Accession	NP_055594.1
Reactivity	Human
Host	Rabbit
Clonality	Polyclonal
Isotype	Rabbit Ig
Calculated MW	79228
Antigen Region	34-62

TSC22D2 Antibody (N-term) - Additional Information

Gene ID 9819

Other Names

TSC22 domain family protein 2,
TSC22-related-inducible leucine zipper
protein 4, TSC22D2, KIAA0669, TILZ4

Target/Specificity

This TSC22D2 antibody is generated from rabbits immunized with a KLH conjugated synthetic peptide between 34-62 amino acids from the N-terminal region of human TSC22D2.

Dilution

IF~~1:10~50

WB~~1:1000

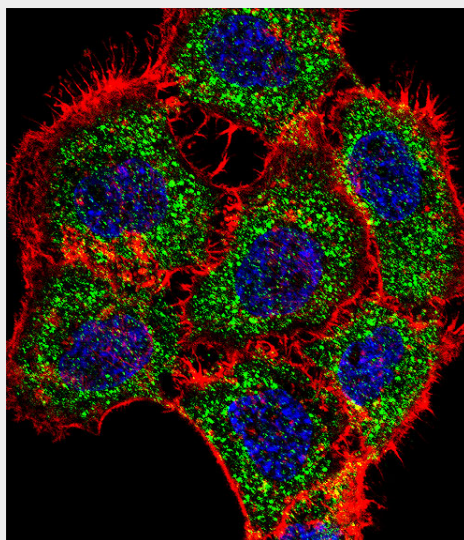
Format

Purified polyclonal antibody supplied in PBS with 0.09% (W/V) sodium azide. This antibody is purified through a protein A column, followed by peptide affinity purification.

Storage

Maintain refrigerated at 2-8°C for up to 2 weeks. For long term storage store at -20°C in small aliquots to prevent freeze-thaw cycles.

Precautions



Fluorescent confocal image of A431 cell stained with TSC22D2 Antibody (N-term)(Cat#AP16530a).A431 cells were fixed with 4% PFA (20 min), permeabilized with Triton X-100 (0.1%, 10 min), then incubated with TSC22D2 primary antibody (1:25, 1 h at 37°C). For secondary antibody, Alexa Fluor® 488 conjugated donkey anti-rabbit antibody (green) was used (1:400, 50 min at 37°C).Cytoplasmic actin was counterstained with Alexa Fluor® 555 (red) conjugated Phalloidin (7units/ml, 1 h at 37°C). Nuclei were counterstained with DAPI (blue) (10 µg/ml, 10 min). TSC22D2 immunoreactivity is localized to Cytoplasm significantly.

TSC22D2 Antibody (N-term) is for research use only and not for use in diagnostic or therapeutic procedures.

TSC22D2 Antibody (N-term) - Protein Information

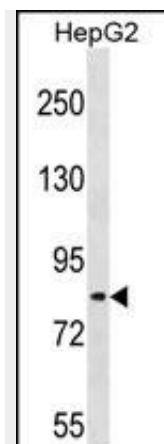
Name TSC22D2

Synonyms KIAA0669, TILZ4

TSC22D2 Antibody (N-term) - Protocols

Provided below are standard protocols that you may find useful for product applications.

- [Western Blot](#)
- [Blocking Peptides](#)
- [Dot Blot](#)
- [Immunohistochemistry](#)
- [Immunofluorescence](#)
- [Immunoprecipitation](#)
- [Flow Cytometry](#)
- [Cell Culture](#)



TSC22D2 Antibody (N-term) (Cat. #AP16530a) western blot analysis in HepG2 cell line lysates (35ug/lane). This demonstrates the TSC22D2 antibody detected the TSC22D2 protein (arrow).

TSC22D2 Antibody (N-term) - Background

TSC22D2 belongs to the TSC-22/Dip/Bun family and the function remains unknown.

TSC22D2 Antibody (N-term) - References

Gluderer, S., et al. J. Biol. 9 (1), 9 (2010) :
Gevaert, K., et al. Nat. Biotechnol. 21(5):566-569(2003)
Gevaert, K., et al. Nat. Biotechnol. 21(5):566-569(2003)