

**SH3PXD2A Antibody (N-term)**  
**Affinity Purified Rabbit Polyclonal Antibody (Pab)**  
**Catalog # AP16560a**

**Specification**

**SH3PXD2A Antibody (N-term) - Product Information**

Application	WB,E
Primary Accession	<a href="#">Q5TCZ1</a>
Other Accession	<a href="#">O89032</a> , <a href="#">NP_055446.2</a>
Reactivity	Human
Predicted	Mouse
Host	Rabbit
Clonality	Polyclonal
Isotype	Rabbit Ig
Calculated MW	125289
Antigen Region	222-250

**SH3PXD2A Antibody (N-term) - Additional Information**

**Gene ID** 9644

**Other Names**

SH3 and PX domain-containing protein 2A, Adapter protein TKS5, Five SH3 domain-containing protein, SH3 multiple domains protein 1, Tyrosine kinase substrate with five SH3 domains, SH3PXD2A, FISH, KIAA0418, SH3MD1, TKS5

**Target/Specificity**

This SH3PXD2A antibody is generated from rabbits immunized with a KLH conjugated synthetic peptide between 222-250 amino acids from the N-terminal region of human SH3PXD2A.

**Dilution**

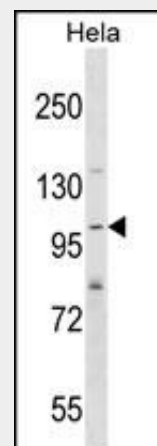
WB~1:1000

**Format**

Purified polyclonal antibody supplied in PBS with 0.09% (W/V) sodium azide. This antibody is purified through a protein A column, followed by peptide affinity purification.

**Storage**

Maintain refrigerated at 2-8°C for up to 2



SH3PXD2A Antibody (N-term) (Cat. #AP16560a) western blot analysis in HeLa cell line lysates (35ug/lane). This demonstrates the SH3PXD2A antibody detected the SH3PXD2A protein (arrow).

**SH3PXD2A Antibody (N-term) - Background**

SH3PXD2A is required for podosome formation, degradation of the extracellular matrix, and for the invasiveness of some cancer cells. Binds phosphatidylinositol 3-phosphate (PtdIns(3)P) and phosphatidylinositol 3,4-bisphosphate (PtdIns(3,4)P2). In association with ADAM12, mediates the neurotoxic effect of beta-amyloid peptide.

**SH3PXD2A Antibody (N-term) - References**

Rose, J.E., et al. Mol. Med. 16 (7-8), 247-253 (2010) :  
Laumet, G., et al. Neurosci. Lett. 468(1):1-2(2010)  
Crimaldi, L., et al. Exp. Cell Res. 315(15):2581-2592(2009)  
Voss, M., et al. BMC Immunol. 10, 53 (2009) :  
Gianni, D., et al. Sci Signal 2 (88), RA54 (2009) :

weeks. For long term storage store at -20°C in small aliquots to prevent freeze-thaw cycles.

**Precautions**

SH3PXD2A Antibody (N-term) is for research use only and not for use in diagnostic or therapeutic procedures.

**SH3PXD2A Antibody (N-term) - Protein Information**

**Name** SH3PXD2A

**Synonyms** FISH, KIAA0418, SH3MD1, TKS5

**Function**

Adapter protein involved in invadopodia and podosome formation, extracellular matrix degradation and invasiveness of some cancer cells. Binds matrix metalloproteinases (ADAMs), NADPH oxidases (NOXs) and phosphoinositides. Acts as an organizer protein that allows NOX1- or NOX3-dependent reactive oxygen species (ROS) generation and ROS localization. In association with ADAM12, mediates the neurotoxic effect of amyloid-beta peptide.

**Cellular Location**

Cytoplasm. Cell projection, podosome. Note=Cytoplasmic in normal cells and localizes to podosomes in SRC- transformed cells

**Tissue Location**

Found in several cancer cell lines, particularly invasive breast carcinomas and melanomas

**SH3PXD2A Antibody (N-term) - Protocols**

Provided below are standard protocols that you may find useful for product applications.

- [Western Blot](#)
- [Blocking Peptides](#)
- [Dot Blot](#)
- [Immunohistochemistry](#)
- [Immunofluorescence](#)
- [Immunoprecipitation](#)
- [Flow Cytometry](#)
- [Cell Culture](#)