

PRSS16 Antibody (N-term)
Affinity Purified Rabbit Polyclonal Antibody (Pab)
Catalog # AP16588a

Specification

PRSS16 Antibody (N-term) - Product Information

Application	WB,E
Primary Accession	Q9NOE7
Other Accession	NP_005856.1
Reactivity	Human, Mouse
Host	Rabbit
Clonality	Polyclonal
Isotype	Rabbit Ig
Calculated MW	55049
Antigen Region	52-81

PRSS16 Antibody (N-term) - Additional Information

Gene ID 10279

Other Names

Thymus-specific serine protease, 34--,
Serine protease 16, PRSS16, TSSP

Target/Specificity

This PRSS16 antibody is generated from rabbits immunized with a KLH conjugated synthetic peptide between 52-81 amino acids from the N-terminal region of human PRSS16.

Dilution

WB~~1:1000

Format

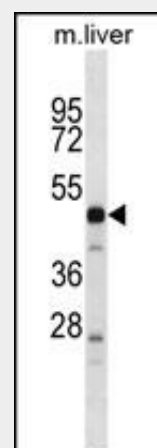
Purified polyclonal antibody supplied in PBS with 0.09% (W/V) sodium azide. This antibody is purified through a protein A column, followed by peptide affinity purification.

Storage

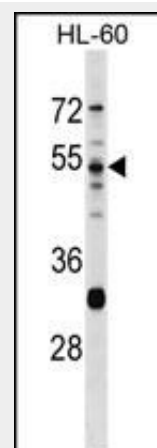
Maintain refrigerated at 2-8°C for up to 2 weeks. For long term storage store at -20°C in small aliquots to prevent freeze-thaw cycles.

Precautions

PRSS16 Antibody (N-term) is for research use only and not for use in diagnostic or



PRSS16 Antibody (N-term) (Cat. #AP16588a) western blot analysis in mouse liver tissue lysates (35ug/lane). This demonstrates the PRSS16 antibody detected the PRSS16 protein (arrow).



PRSS16 Antibody (N-term) (Cat. #AP16588a) western blot analysis in HL-60 cell line lysates (35ug/lane). This demonstrates the PRSS16 antibody detected the PRSS16 protein (arrow).

PRSS16 Antibody (N-term) - Background

This gene encodes a serine protease expressed exclusively in the thymus. It is thought to play a role in the

therapeutic procedures.

PRSS16 Antibody (N-term) - Protein Information

Name PRSS16

Synonyms TSSP

Function

Protease that may play a role in T-cell development.

Cellular Location

Cytoplasmic vesicle. Note=Vesicular, either lysosomal or endosomal

Tissue Location

Expressed predominantly in cortical thymic epithelial cells

PRSS16 Antibody (N-term) - Protocols

Provided below are standard protocols that you may find useful for product applications.

- [Western Blot](#)
- [Blocking Peptides](#)
- [Dot Blot](#)
- [Immunohistochemistry](#)
- [Immunofluorescence](#)
- [Immunoprecipitation](#)
- [Flow Cytometry](#)
- [Cell Culture](#)

alternative antigen presenting pathway used by cortical thymic epithelial cells during the positive selection of T cells. The gene is found in the large histone gene cluster on chromosome 6, near the major histocompatibility complex (MHC) class I region. A second transcript variant has been described, but its full length nature has not been determined.

PRSS16 Antibody (N-term) - References

Shi, J., et al. Nature 460(7256):753-757(2009)
Stefansson, H., et al. Nature 460(7256):744-747(2009)
Viken, M.K., et al. Genes Immun. 10(4):323-333(2009)
Lie, B.A., et al. Hum. Immunol. 68(7):592-598(2007)
Luther, C., et al. Genes Immun. 6(1):1-7(2005)