

**RYBP Antibody (N-term)**  
**Affinity Purified Rabbit Polyclonal Antibody (Pab)**  
**Catalog # AP16629A**

**Specification**

**RYBP Antibody (N-term) - Product Information**

Application	WB,E
Primary Accession	<a href="#">Q8N488</a>
Other Accession	<a href="#">Q8CCI5</a> , <a href="#">NP_036366.3</a>
Reactivity	Human
Predicted	Mouse
Host	Rabbit
Clonality	Polyclonal
Isotype	Rabbit Ig
Calculated MW	24822
Antigen Region	1-30

**RYBP Antibody (N-term) - Additional Information**

**Gene ID** 23429

**Other Names**

RING1 and YY1-binding protein,  
Apoptin-associating protein 1, APAP-1,  
Death effector domain-associated factor,  
DED-associated factor, YY1 and  
E4TF1-associated factor 1, RYBP, DEDAF,  
YEAFL

**Target/Specificity**

This RYBP antibody is generated from rabbits immunized with a KLH conjugated synthetic peptide between 1-30 amino acids from the N-terminal region of human RYBP.

**Dilution**

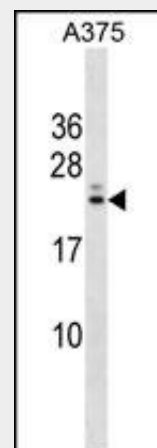
WB~~1:1000

**Format**

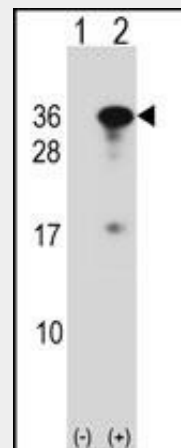
Purified polyclonal antibody supplied in PBS with 0.09% (W/V) sodium azide. This antibody is purified through a protein A column, followed by peptide affinity purification.

**Storage**

Maintain refrigerated at 2-8°C for up to 2 weeks. For long term storage store at -20°C in small aliquots to prevent freeze-thaw cycles.



RYBP Antibody (N-term) (Cat. #AP16629a) western blot analysis in A375 cell line lysates (35ug/lane). This demonstrates the RYBP antibody detected the RYBP protein (arrow).



Western blot analysis of RYBP (arrow) using rabbit polyclonal RYBP Antibody (N-term) (Cat. #AP16629a). 293 cell lysates (2 ug/lane) either nontransfected (Lane 1) or transiently transfected (Lane 2) with the RYBP gene.

**RYBP Antibody (N-term) - Background**

RYBP may be implicated in the regulation of the transcription as a repressor of the transcriptional activity of E4TF1. In tumor cell

**Precautions**

RYBP Antibody (N-term) is for research use only and not for use in diagnostic or therapeutic procedures.

**RYBP Antibody (N-term) - Protein Information**

**Name** RYBP

**Synonyms** DEDAF, YEA1

**Function**

Component of a Polycomb group (PcG) multiprotein PRC1-like complex, a complex class required to maintain the transcriptionally repressive state of many genes, including Hox genes, throughout development. PcG PRC1-like complex acts via chromatin remodeling and modification of histones; it mediates monoubiquitination of histone H2A 'Lys-119', rendering chromatin heritably changed in its expressibility (PubMed:<a href="http://www.uniprot.org/citations/25519132" target="\_blank">25519132</a>).

Component of a PRC1-like complex that mediates monoubiquitination of histone H2A 'Lys-119' on the X chromosome and is required for normal silencing of one copy of the X chromosome in XX females. May stimulate ubiquitination of histone H2A 'Lys-119' by recruiting the complex to target sites (By similarity). Inhibits ubiquitination and subsequent degradation of TP53, and thereby plays a role in regulating transcription of TP53 target genes (PubMed:<a href="http://www.uniprot.org/citations/19098711" target="\_blank">19098711</a>). May also regulate the ubiquitin-mediated proteasomal degradation of other proteins like FANK1 to regulate apoptosis (PubMed:<a href="http://www.uniprot.org/citations/14765135" target="\_blank">14765135</a>, PubMed:<a href="http://www.uniprot.org/citations/27060496" target="\_blank">27060496</a>). May be implicated in the regulation of the transcription as a repressor of the transcriptional activity of E4TF1 (PubMed:<a href="http://www.uniprot.org/citations/11953439" target="\_blank">11953439</a>). May bind to DNA (By similarity). May play a role in the repression of tumor growth and

lines, may induce apoptosis.

**RYBP Antibody (N-term) - References**

Rose, J. Phd, et al. Mol. Med. (2010) In press :  
Chen, D., et al. EMBO Rep.  
10(2):166-172(2009)  
Novak, R.L., et al. Cancer Gene Ther.  
15(11):713-722(2008)  
Danen-van Oorschot, A.A., et al. Cell Death Differ. 11(5):564-573(2004)  
Guelen, L., et al. Oncogene  
23(5):1153-1165(2004)

metastasis in breast cancer by down-regulating SRRM3 (PubMed:<a href="http://www.uniprot.org/citations/27748911" target="\_blank">27748911</a>).

**Cellular Location**

Nucleus. Cytoplasm. Nucleus, nucleoplasm {ECO:0000250|UniProtKB:Q8CCI5}.

Note=Primarily found in the nucleus

Detected in a punctate pattern likely to represent Polycomb group (PcG) bodies (By similarity).

{ECO:0000250|UniProtKB:Q8CCI5}

**Tissue Location**

Down-regulated in breast cancer tissues and in several breast cancer cell lines (at protein level) (PubMed:27748911) Widely expressed with highest levels in lymphoid tissues and placenta

**RYBP Antibody (N-term) - Protocols**

Provided below are standard protocols that you may find useful for product applications.

- [Western Blot](#)
- [Blocking Peptides](#)
- [Dot Blot](#)
- [Immunohistochemistry](#)
- [Immunofluorescence](#)
- [Immunoprecipitation](#)
- [Flow Cytometry](#)
- [Cell Culture](#)