

KRT6A Antibody (N-term)
Affinity Purified Rabbit Polyclonal Antibody (Pab)
Catalog # AP16974a

Specification

KRT6A Antibody (N-term) - Product Information

Application	WB,E
Primary Accession	P02538
Other Accession	O95678 , NP_005545.1
Reactivity	Human
Host	Rabbit
Clonality	Polyclonal
Isotype	Rabbit Ig
Calculated MW	60045
Antigen Region	135-164

KRT6A Antibody (N-term) - Additional Information

Gene ID 3853

Other Names

Keratin, type II cytoskeletal 6A,
Cytokeratin-6A, CK-6A, Cytokeratin-6D,
CK-6D, Keratin-6A, K6A, Type-II keratin Kb6,
Hom s 5, KRT6A, K6A, KRT6D

Target/Specificity

This KRT6A antibody is generated from rabbits immunized with a KLH conjugated synthetic peptide between 135-164 amino acids from the N-terminal region of human KRT6A.

Dilution

WB~~1:1000

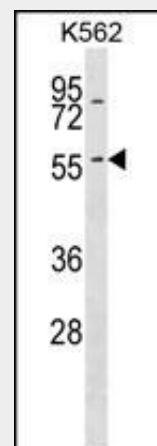
Format

Purified polyclonal antibody supplied in PBS with 0.09% (W/V) sodium azide. This antibody is purified through a protein A column, followed by peptide affinity purification.

Storage

Maintain refrigerated at 2-8°C for up to 2 weeks. For long term storage store at -20°C in small aliquots to prevent freeze-thaw cycles.

Precautions



KRT6A Antibody (N-term) (Cat. #AP16974a) western blot analysis in K562 cell line lysates (35ug/lane). This demonstrates the KRT6A antibody detected the KRT6A protein (arrow).

KRT6A Antibody (N-term) - Background

The protein encoded by this gene is a member of the keratin gene family. The type II cytokeratins consist of basic or neutral proteins which are arranged in pairs of heterotypic keratin chains coexpressed during differentiation of simple and stratified epithelial tissues. As many as six of this type II cytokeratin (KRT6) have been identified; the multiplicity of the genes is attributed to successive gene duplication events. The genes are expressed with family members KRT16 and/or KRT17 in the filiform papillae of the tongue, the stratified epithelial lining of oral mucosa and esophagus, the outer root sheath of hair follicles, and the glandular epithelia. This KRT6 gene in particular encodes the most abundant isoform. Mutations in these genes have been

KRT6A Antibody (N-term) is for research use only and not for use in diagnostic or therapeutic procedures.

KRT6A Antibody (N-term) - Protein Information

Name KRT6A

Synonyms K6A, KRT6D

Function

Epidermis-specific type I keratin involved in wound healing. Involved in the activation of follicular keratinocytes after wounding, while it does not play a major role in keratinocyte proliferation or migration. Participates in the regulation of epithelial migration by inhibiting the activity of SRC during wound repair.

Tissue Location

Expressed in the corneal epithelium (at protein level).

associated with pachyonychia congenita. The type II cytokeratins are clustered in a region of chromosome 12q12-q13. [provided by RefSeq].

KRT6A Antibody (N-term) - References

Dereure, O. Ann Dermatol Venereol 137(5):423-424(2010)
Trost, A., et al. Mech. Ageing Dev. 131(5):346-353(2010)
Yang, L., et al. Zhonghua Yi Xue Yi Chuan Xue Za Zhi 27(1):66-68(2010)
Millar, E.K., et al. J. Clin. Oncol. 27(28):4701-4708(2009)
Bai, Z.L., et al. Zhonghua Yi Xue Yi Chuan Xue Za Zhi 26(5):514-517(2009)

KRT6A Antibody (N-term) - Protocols

Provided below are standard protocols that you may find useful for product applications.

- [Western Blot](#)
- [Blocking Peptides](#)
- [Dot Blot](#)
- [Immunohistochemistry](#)
- [Immunofluorescence](#)
- [Immunoprecipitation](#)
- [Flow Cytometry](#)
- [Cell Culture](#)