

RPAP1 Antibody (N-term)
Affinity Purified Rabbit Polyclonal Antibody (Pab)
Catalog # AP17128a

Specification

RPAP1 Antibody (N-term) - Product Information

Application	WB,E
Primary Accession	Q9BWH6
Other Accession	NP_056355.2
Reactivity	Human
Host	Rabbit
Clonality	Polyclonal
Isotype	Rabbit Ig
Calculated MW	152755
Antigen Region	282-310

RPAP1 Antibody (N-term) - Additional Information

Gene ID 26015

Other Names

RNA polymerase II-associated protein 1,
RPAP1, KIAA1403

Target/Specificity

This RPAP1 antibody is generated from rabbits immunized with a KLH conjugated synthetic peptide between 282-310 amino acids from the N-terminal region of human RPAP1.

Dilution

WB~~1:1000

Format

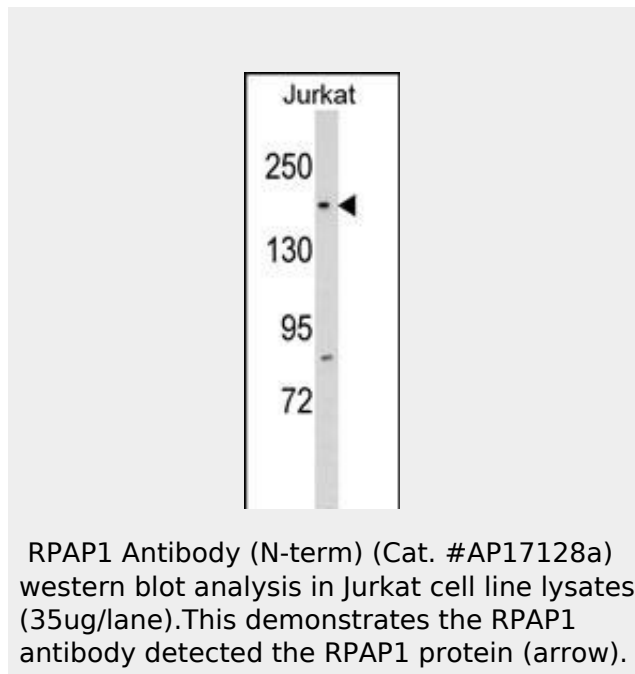
Purified polyclonal antibody supplied in PBS with 0.09% (W/V) sodium azide. This antibody is purified through a protein A column, followed by peptide affinity purification.

Storage

Maintain refrigerated at 2-8°C for up to 2 weeks. For long term storage store at -20°C in small aliquots to prevent freeze-thaw cycles.

Precautions

RPAP1 Antibody (N-term) is for research use only and not for use in diagnostic or therapeutic procedures.



RPAP1 Antibody (N-term) - Background

The function of this gene is unknown.
[provided by RefSeq].

RPAP1 Antibody (N-term) - References

- Rose, J.E., et al. Mol. Med. 16 (7-8), 247-253 (2010) :
- Kuraoka, I., et al. DNA Repair (Amst.) 6(6):841-851(2007)
- Ballif, B.A., et al. Mol. Cell Proteomics 3(11):1093-1101(2004)
- Ballif, B.A., et al. Mol. Cell Proteomics 3(11):1093-1101(2004)
- Beausoleil, S.A., et al. Proc. Natl. Acad. Sci. U.S.A. 101(33):12130-12135(2004)

RPAP1 Antibody (N-term) - Protein Information

Name RPAP1

Synonyms KIAA1403

Function

Forms an interface between the RNA polymerase II enzyme and chaperone/scaffolding protein, suggesting that it is required to connect RNA polymerase II to regulators of protein complex formation. Required for interaction of the RNA polymerase II complex with acetylated histone H3.

Cellular Location

Nucleus.

RPAP1 Antibody (N-term) - Protocols

Provided below are standard protocols that you may find useful for product applications.

- [Western Blot](#)
- [Blocking Peptides](#)
- [Dot Blot](#)
- [Immunohistochemistry](#)
- [Immunofluorescence](#)
- [Immunoprecipitation](#)
- [Flow Cytometry](#)
- [Cell Culture](#)