

TRAT1 Antibody (Center)
Affinity Purified Rabbit Polyclonal Antibody (Pab)
Catalog # AP17143c

Specification

TRAT1 Antibody (Center) - Product Information

Application	WB,E
Primary Accession	O6PIZ9
Other Accession	NP_057472.2
Reactivity	Human, Mouse
Host	Rabbit
Clonality	Polyclonal
Isotype	Rabbit Ig
Calculated MW	21211
Antigen Region	98-127

TRAT1 Antibody (Center) - Additional Information

Gene ID 50852

Other Names

T-cell receptor-associated transmembrane adapter 1, T-cell receptor-interacting molecule, TRIM, pp29/30, TRAT1, TCRIM

Target/Specificity

This TRAT1 antibody is generated from rabbits immunized with a KLH conjugated synthetic peptide between 98-127 amino acids from the Central region of human TRAT1.

Dilution

WB~~1:1000

Format

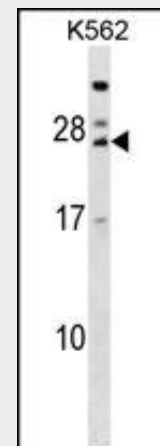
Purified polyclonal antibody supplied in PBS with 0.09% (W/V) sodium azide. This antibody is purified through a protein A column, followed by peptide affinity purification.

Storage

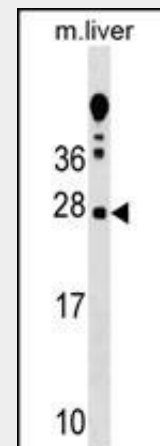
Maintain refrigerated at 2-8°C for up to 2 weeks. For long term storage store at -20°C in small aliquots to prevent freeze-thaw cycles.

Precautions

TRAT1 Antibody (Center) is for research use only and not for use in diagnostic or



TRAT1 Antibody (Center) (Cat. #AP17143c) western blot analysis in K562 cell line lysates (35ug/lane). This demonstrates the TRAT1 antibody detected the TRAT1 protein (arrow).



TRAT1 Antibody (Center) (Cat. #AP17143c) western blot analysis in mouse liver tissue lysates (35ug/lane). This demonstrates the TRAT1 antibody detected the TRAT1 protein (arrow).

TRAT1 Antibody (Center) - Background

TRAT1 stabilizes the TCR (T-cell antigen receptor)/CD3 complex at the surface of T-cells.

therapeutic procedures.

TRAT1 Antibody (Center) - Protein Information

Name TRAT1

Synonyms TCRIM

Function

Stabilizes the TCR (T-cell antigen receptor)/CD3 complex at the surface of T-cells.

Cellular Location

Cell membrane; Single-pass type III membrane protein

Tissue Location

Strongly expressed in thymus, and to a lesser extent in spleen, lymph node and peripheral blood lymphocytes. Present in T-cells and NK cells, but not B-cells (at protein level)

TRAT1 Antibody (Center) - References

Jarvis, L.B., et al. Hum. Immunol. 69(11):687-695(2008)
Tedoldi, S., et al. Blood 107(1):213-221(2006)
Koyasu, S. Nat. Immunol. 4(4):313-319(2003)
Kirchgessner, H., et al. J. Exp. Med. 193(11):1269-1284(2001)
Zhang, W., et al. Semin. Immunol. 12(1):35-41(2000)

TRAT1 Antibody (Center) - Protocols

Provided below are standard protocols that you may find useful for product applications.

- [Western Blot](#)
- [Blocking Peptides](#)
- [Dot Blot](#)
- [Immunohistochemistry](#)
- [Immunofluorescence](#)
- [Immunoprecipitation](#)
- [Flow Cytometry](#)
- [Cell Culture](#)