

RTN1 Antibody (N-term)
Affinity Purified Rabbit Polyclonal Antibody (Pab)
Catalog # AP17182a

Specification

RTN1 Antibody (N-term) - Product Information

Application	WB,E
Primary Accession	Q16799
Other Accession	NP_996734.1 , NP_066959.1
Reactivity	Human, Mouse
Host	Rabbit
Clonality	Polyclonal
Isotype	Rabbit Ig
Calculated MW	83618
Antigen Region	198-227

RTN1 Antibody (N-term) - Additional Information

Gene ID 6252

Other Names

Reticulon-1, Neuroendocrine-specific protein, RTN1, NSP

Target/Specificity

This RTN1 antibody is generated from rabbits immunized with a KLH conjugated synthetic peptide between 198-227 amino acids from the N-terminal region of human RTN1.

Dilution

WB~~1:1000

Format

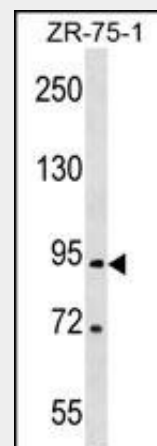
Purified polyclonal antibody supplied in PBS with 0.09% (W/V) sodium azide. This antibody is purified through a protein A column, followed by peptide affinity purification.

Storage

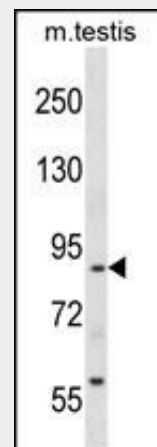
Maintain refrigerated at 2-8°C for up to 2 weeks. For long term storage store at -20°C in small aliquots to prevent freeze-thaw cycles.

Precautions

RTN1 Antibody (N-term) is for research use only and not for use in diagnostic or



RTN1 Antibody (N-term) (Cat. #AP17182a) western blot analysis in ZR-75-1 cell line lysates (35ug/lane). This demonstrates the RTN1 antibody detected the RTN1 protein (arrow).



RTN1 Antibody (N-term) (Cat. #AP17182a) western blot analysis in mouse testis tissue lysates (35ug/lane). This demonstrates the RTN1 antibody detected the RTN1 protein (arrow).

RTN1 Antibody (N-term) - Background

This gene belongs to the family of reticulon encoding genes. Reticulons are associated with the

therapeutic procedures.

RTN1 Antibody (N-term) - Protein Information

Name RTN1

Synonyms NSP

Function

Inhibits amyloid precursor protein processing, probably by blocking BACE1 activity.

Cellular Location

Endoplasmic reticulum membrane; Multi-pass membrane protein. Golgi apparatus membrane; Multi-pass membrane protein

Tissue Location

Expressed in neural and neuroendocrine tissues and cell cultures derived therefrom. Expression of isoform RTN1-C is strongly correlated with neuronal differentiation

endoplasmic reticulum, and are involved in neuroendocrine secretion or in membrane trafficking in neuroendocrine cells. Alternatively spliced transcript variants encoding different isoforms have been identified. Multiple promoters rather than alternative splicing of internal exons seem to be involved in this diversity. [provided by RefSeq].

RTN1 Antibody (N-term) - References

Rose, J. Phd, et al. Mol. Med. (2010) In press :
Fazi, B., et al. Oncogene 28(43):3814-3824(2009)
Melino, S., et al. Biochemistry 48(2):242-253(2009)
Di Sano, F., et al. J. Neurochem. 102(2):345-353(2007)
Iwahashi, J., et al. Biochem. Biophys. Res. Commun. 355(2):508-512(2007)

RTN1 Antibody (N-term) - Protocols

Provided below are standard protocols that you may find useful for product applications.

- [Western Blot](#)
- [Blocking Peptides](#)
- [Dot Blot](#)
- [Immunohistochemistry](#)
- [Immunofluorescence](#)
- [Immunoprecipitation](#)
- [Flow Cytometry](#)
- [Cell Culture](#)