

**GNPMB Antibody (C-term)**  
**Affinity Purified Rabbit Polyclonal Antibody (Pab)**  
**Catalog # AP17232b**

**Specification**

**GNPMB Antibody (C-term) - Product Information**

Application	WB,E
Primary Accession	<a href="#">Q14956</a>
Other Accession	<a href="#">NP_002501.1</a> , <a href="#">NP_001005340.1</a>
Reactivity	Human
Host	Rabbit
Clonality	Polyclonal
Isotype	Rabbit Ig
Calculated MW	63923
Antigen Region	541-569

**GNPMB Antibody (C-term) - Additional Information**

**Gene ID** 10457

**Other Names**

Transmembrane glycoprotein NMB,  
Transmembrane glycoprotein HGFIN,  
GNPMB, HGFIN, NMB

**Target/Specificity**

This GNPMB antibody is generated from rabbits immunized with a KLH conjugated synthetic peptide between 541-569 amino acids from the C-terminal region of human GNPMB.

**Dilution**

WB~1:500

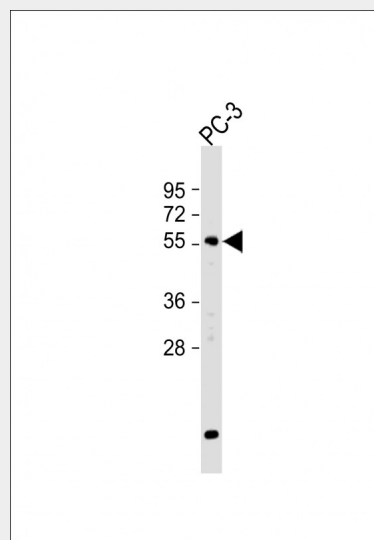
**Format**

Purified polyclonal antibody supplied in PBS with 0.09% (W/V) sodium azide. This antibody is purified through a protein A column, followed by peptide affinity purification.

**Storage**

Maintain refrigerated at 2-8°C for up to 2 weeks. For long term storage store at -20°C in small aliquots to prevent freeze-thaw cycles.

**Precautions**



Anti-GNPMB Antibody (C-term) at 1:500 dilution + PC-3 whole cell lysate  
Lysates/proteins at 20 µg per lane.  
Secondary Goat Anti-Rabbit IgG, (H+L), Peroxidase conjugated at 1/10000 dilution.  
Predicted band size : 64 kDa  
Blocking/Dilution buffer: 5% NFDM/TBST.

**GNPMB Antibody (C-term) - Background**

The protein encoded by this gene is a type I transmembrane glycoprotein which shows homology to the pMEL17 precursor, a melanocyte-specific protein. GNPMB shows expression in the lowly metastatic human melanoma cell lines and xenografts but does not show expression in the highly metastatic cell lines. GNPMB may be involved in growth delay and reduction of metastatic potential. Two transcript variants encoding different isoforms have been found for this gene.

**GNPMB Antibody (C-term) - References**

GPNMB Antibody (C-term) is for research use only and not for use in diagnostic or therapeutic procedures.

#### **GPNMB Antibody (C-term) - Protein Information**

**Name** GPNMB

**Synonyms** HGFIN  
{ECO:0000303|PubMed:12609765}, NMB

#### **Function**

Could be a melanogenic enzyme.

#### **Cellular Location**

Cell membrane; Single-pass type I membrane protein Melanosome membrane; Single-pass type I membrane protein. Early endosome membrane; Single-pass type I membrane protein. Note=Identified by mass spectrometry in melanosome fractions from stage I to stage IV

#### **Tissue Location**

Widely expressed, but very low expression, if any, in the brain (PubMed:12609765, PubMed:16609006). Expressed in the epidermis with higher levels in melanocytes compared with keratinocytes and Langerhans cells (at protein level) (PubMed:29336782). Expressed in peripheral blood, but not bone marrow mononuclear cells (PubMed:12609765). Expressed in tissue macrophages, including liver Kuppfer cells and lung alveolar macrophages, in podocytes and in some cells of the ciliary body of the eye (at protein level) (PubMed:16489096). May be overexpressed in various cancers, including melanoma and glioblastoma multiforme (PubMed:7814155, PubMed:16489096, PubMed:16609006).

Rose, J.E., et al. Mol. Med. 16 (7-8), 247-253 (2010) :  
Williams, M.D., et al. Melanoma Res. 20(3):184-190(2010)  
Hoashi, T., et al. FASEB J. 24(5):1616-1629(2010)  
Rose, A.A., et al. Clin. Cancer Res. 16(7):2147-2156(2010)  
Rose, A.A., et al. PLoS ONE 5 (8), E12093 (2010) :

#### **GPNMB Antibody (C-term) - Protocols**

Provided below are standard protocols that you may find useful for product applications.

- [Western Blot](#)
- [Blocking Peptides](#)
- [Dot Blot](#)
- [Immunohistochemistry](#)
- [Immunofluorescence](#)
- [Immunoprecipitation](#)

- [Flow Cytometry](#)
- [Cell Culture](#)