

CADM3 Antibody (Center)
Affinity Purified Rabbit Polyclonal Antibody (Pab)
Catalog # AP17304C

Specification

CADM3 Antibody (Center) - Product Information

Application	WB,E
Primary Accession	Q8N126
Other Accession	NP_001120645.1 , NP_067012.1
Reactivity	Human
Host	Rabbit
Clonality	Polyclonal
Isotype	Rabbit Ig
Calculated MW	43300
Antigen Region	158-186

CADM3 Antibody (Center) - Additional Information

Gene ID 57863

Other Names

Cell adhesion molecule 3, Brain immunoglobulin receptor, Immunoglobulin superfamily member 4B, IGSF4B, Nectin-like protein 1, NECL-1, Synaptic cell adhesion molecule 3, SynCAM3, TSLC1-like protein 1, TSLL1, CADM3, IGSF4B, NECL1, SYNCAM3, TSLL1

Target/Specificity

This CADM3 antibody is generated from rabbits immunized with a KLH conjugated synthetic peptide between 158-186 amino acids from the Central region of human CADM3.

Dilution

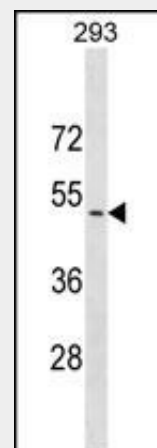
WB~~1:1000

Format

Purified polyclonal antibody supplied in PBS with 0.09% (W/V) sodium azide. This antibody is purified through a protein A column, followed by peptide affinity purification.

Storage

Maintain refrigerated at 2-8°C for up to 2 weeks. For long term storage store at -20°C



CADM3 Antibody (Center) (Cat. #AP17304c) western blot analysis in 293 cell line lysates (35ug/lane). This demonstrates the CADM3 antibody detected the CADM3 protein (arrow).

CADM3 Antibody (Center) - Background

IGSF4B is a brain-specific protein related to the calcium-independent cell-cell adhesion molecules known as nectins (see PVRL3; MIM 607147) (Kakunaga et al., 2005 [PubMed 15741237]).

CADM3 Antibody (Center) - References

- Yin, B., et al. Chin. Med. Sci. J. 25(2):100-104(2010)
- Davila, S., et al. Genes Immun. 11(3):232-238(2010)
- Raveh, S., et al. J. Cell. Biochem. 108(1):326-336(2009)
- Martins-de-Souza, D., et al. Eur Arch Psychiatry Clin Neurosci 259(3):151-163(2009)
- Dong, X., et al. J. Biol. Chem. 281(15):10610-10617(2006)

in small aliquots to prevent freeze-thaw cycles.

Precautions

CADM3 Antibody (Center) is for research use only and not for use in diagnostic or therapeutic procedures.

CADM3 Antibody (Center) - Protein Information

Name CADM3

Synonyms IGSF4B, NECL1, SYNCAM3, TSLL1

Function

Involved in the cell-cell adhesion. Has both calcium- independent homophilic cell-cell adhesion activity and calcium- independent heterophilic cell-cell adhesion activity with IGSF4, NECTIN1 and NECTIN3. Interaction with EPB41L1 may regulate structure or function of cell-cell junctions (By similarity).

Cellular Location

Cell membrane

{ECO:0000250|UniProtKB:Q99N28};

Single-pass type I membrane protein

{ECO:0000250|UniProtKB:Q99N28} Cell

junction {ECO:0000250|UniProtKB:Q99N28}

Tissue Location

Isoform 1 is expressed mainly in adult and fetal brain. Isoform 2 is highly expressed in adult brain and weakly expressed in placenta. In brain, Isoform 2 is highly expressed in cerebellum.

CADM3 Antibody (Center) - Protocols

Provided below are standard protocols that you may find useful for product applications.

- [Western Blot](#)
- [Blocking Peptides](#)
- [Dot Blot](#)
- [Immunohistochemistry](#)
- [Immunofluorescence](#)
- [Immunoprecipitation](#)
- [Flow Cytometry](#)
- [Cell Culture](#)