

CADM2 Antibody (N-term)
Affinity Purified Rabbit Polyclonal Antibody (Pab)
Catalog # AP17511a

Specification

CADM2 Antibody (N-term) - Product Information

Application	WB,E
Primary Accession	Q8N3J6
Other Accession	Q1WIM2 , Q8BLO9 , NP_001161146.1 , NP_001161147.1
Reactivity	Human
Predicted	Mouse, Rat
Host	Rabbit
Clonality	Polyclonal
Isotype	Rabbit Ig
Calculated MW	47554
Antigen Region	50-76

CADM2 Antibody (N-term) - Additional Information

Gene ID 253559

Other Names

Cell adhesion molecule 2, Immunoglobulin superfamily member 4D, IGSF4D, Nectin-like protein 3, NECL-3, Synaptic cell adhesion molecule 2, SynCAM 2, CADM2, IGSF4D, NECL3

Target/Specificity

This CADM2 antibody is generated from rabbits immunized with a KLH conjugated synthetic peptide between 50-76 amino acids from the N-terminal region of human CADM2.

Dilution

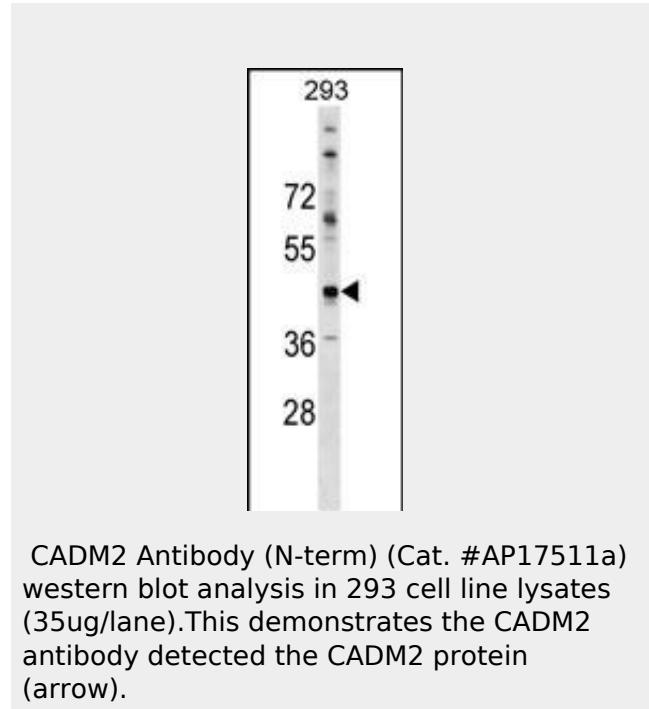
WB~~1:1000

Format

Purified polyclonal antibody supplied in PBS with 0.09% (W/V) sodium azide. This antibody is purified through a protein A column, followed by peptide affinity purification.

Storage

Maintain refrigerated at 2-8°C for up to 2 weeks. For long term storage store at -20°C



CADM2 Antibody (N-term) - Background

Members of the large immunoglobulin (Ig) superfamily, such as IGSF4D, have diverse roles in extracellular recognition and intercellular adhesion (Biederer, 2006 [PubMed 16311015]). [supplied by OMIM].

CADM2 Antibody (N-term) - References

- Rose, J.E., et al. Mol. Med. 16 (7-8), 247-253 (2010) :
- Festen, E.A., et al. Am. J. Gastroenterol. 105(2):395-402(2010)
- Biederer, T. Genomics 87(1):139-150(2006)

in small aliquots to prevent freeze-thaw cycles.

Precautions

CADM2 Antibody (N-term) is for research use only and not for use in diagnostic or therapeutic procedures.

CADM2 Antibody (N-term) - Protein Information

Name CADM2

Synonyms IGSF4D, NECL3

Function

Adhesion molecule that engages in homo- and heterophilic interactions with the other nectin-like family members, leading to cell aggregation. Important for synapse organization, providing regulated trans-synaptic adhesion. Preferentially binds to oligodendrocytes.

Cellular Location

Cell membrane; Single-pass type I membrane protein. Cell junction, synapse. Cell projection, axon. Note=Found in the axoplasm of myelinated axons

CADM2 Antibody (N-term) - Protocols

Provided below are standard protocols that you may find useful for product applications.

- [Western Blot](#)
- [Blocking Peptides](#)
- [Dot Blot](#)
- [Immunohistochemistry](#)
- [Immunofluorescence](#)
- [Immunoprecipitation](#)
- [Flow Cytometry](#)
- [Cell Culture](#)