

ZNF323 Antibody (Center)
Affinity Purified Rabbit Polyclonal Antibody (Pab)
Catalog # AP17548c

Specification

ZNF323 Antibody (Center) - Product Information

Application	WB,E
Primary Accession	Q96LW9
Other Accession	NP_001128687.1 , NP_001128688.1
Reactivity	Human
Host	Rabbit
Clonality	Polyclonal
Isotype	Rabbit Ig
Calculated MW	47293
Antigen Region	190-217

ZNF323 Antibody (Center) - Additional Information

Gene ID 64288

Other Names

Zinc finger and SCAN domain-containing protein 31, Zinc finger protein 323, ZSCAN31, ZNF310P, ZNF323

Target/Specificity

This ZNF323 antibody is generated from rabbits immunized with a KLH conjugated synthetic peptide between 190-217 amino acids from the Central region of human ZNF323.

Dilution

WB~1:1000

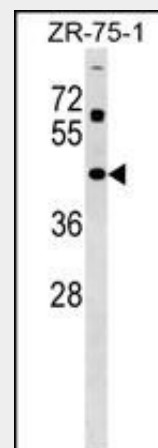
Format

Purified polyclonal antibody supplied in PBS with 0.09% (W/V) sodium azide. This antibody is purified through a protein A column, followed by peptide affinity purification.

Storage

Maintain refrigerated at 2-8°C for up to 2 weeks. For long term storage store at -20°C in small aliquots to prevent freeze-thaw cycles.

Precautions



ZNF323 Antibody (Center) (Cat. #AP17548c) western blot analysis in ZR-75-1 cell line lysates (35ug/lane). This demonstrates the ZNF323 antibody detected the ZNF323 protein (arrow).

ZNF323 Antibody (Center) - Background

ZNF323 is a member of the subfamily of C2H2 Kruppel-like zinc finger transcription factors that have a SCAN box domain (Pi et al., 2002 [PubMed 12147252]).

ZNF323 Antibody (Center) - References

Pi, H., et al. Biochem. Biophys. Res. Commun. 296(1):206-213(2002)

ZNF323 Antibody (Center) is for research use only and not for use in diagnostic or therapeutic procedures.

ZNF323 Antibody (Center) - Protein Information

Name ZSCAN31

Synonyms ZNF310P, ZNF323

Function

May function as a transcription factor. May be involved in the development of multiple embryonic organs.

Cellular Location

Nucleus.

Tissue Location

Expressed at high levels in the lung, liver, and kidney, while weakly expressed in intestine, brain, muscle, cholecyst, heart, and pancreas.

ZNF323 Antibody (Center) - Protocols

Provided below are standard protocols that you may find useful for product applications.

- [Western Blot](#)
- [Blocking Peptides](#)
- [Dot Blot](#)
- [Immunohistochemistry](#)
- [Immunofluorescence](#)
- [Immunoprecipitation](#)
- [Flow Cytometry](#)
- [Cell Culture](#)