

CRB3 Antibody (Center)
Affinity Purified Rabbit Polyclonal Antibody (Pab)
Catalog # AP17560c

Specification

CRB3 Antibody (Center) - Product Information

Application	WB,E
Primary Accession	Q9BUF7
Other Accession	Q8QZT4 , NP_631900.1 , NP_777377.1
Reactivity	Human, Mouse
Host	Rabbit
Clonality	Polyclonal
Isotype	Rabbit Ig
Calculated MW	12854
Antigen Region	67-95

CRB3 Antibody (Center) - Additional Information

Gene ID 92359

Other Names

Protein crumbs homolog 3, CRB3

Target/Specificity

This CRB3 antibody is generated from rabbits immunized with a KLH conjugated synthetic peptide between 67-95 amino acids from the Central region of human CRB3.

Dilution

WB~1:1000

Format

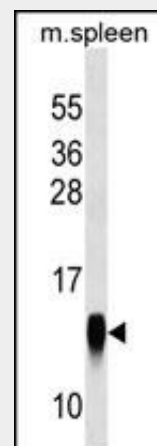
Purified polyclonal antibody supplied in PBS with 0.09% (W/V) sodium azide. This antibody is purified through a protein A column, followed by peptide affinity purification.

Storage

Maintain refrigerated at 2-8°C for up to 2 weeks. For long term storage store at -20°C in small aliquots to prevent freeze-thaw cycles.

Precautions

CRB3 Antibody (Center) is for research use only and not for use in diagnostic or



CRB3 Antibody (Center) (Cat. #AP17560c) western blot analysis in mouse spleen tissue lysates (35ug/lane). This demonstrates the CRB3 antibody detected the CRB3 protein (arrow).

CRB3 Antibody (Center) - Background

This gene encodes a member of the Crumbs family of proteins. This protein may play a role in epithelial cell polarity and is associated with tight junctions at the apical surface of epithelial cells. Alternate transcriptional splice variants, encoding different isoforms, have been characterized. [provided by RefSeq].

CRB3 Antibody (Center) - References

Pardossi-Piquard, R., et al. Biochemistry 46(48):13704-13710(2007)
Fan, S., et al. J. Cell Biol. 178(3):387-398(2007)
Fogg, V.C., et al. J. Cell. Sci. 118 (PT 13), 2859-2869 (2005) :
Lemmers, C., et al. Mol. Biol. Cell 15(3):1324-1333(2004)
Roh, M.H., et al. J. Cell. Sci. 116 (PT 14), 2895-2906 (2003) :

therapeutic procedures.

CRB3 Antibody (Center) - Protein Information

Name CRB3 ([HGNC:20237](#))

Function

Involved in the establishment of cell polarity in mammalian epithelial cells (PubMed:[12771187](http://www.uniprot.org/citations/12771187)), PubMed:[14718572](http://www.uniprot.org/citations/14718572)). Regulates the morphogenesis of tight junctions (PubMed:[12771187](http://www.uniprot.org/citations/12771187)), PubMed:[14718572](http://www.uniprot.org/citations/14718572)). Involved in promoting phosphorylation and cytoplasmic retention of transcriptional coactivators YAP1 and WWTR1/TAZ which leads to suppression of TGFB1-dependent transcription of target genes such as CCN2/CTGF, SERPINE1/PAI1, SNAI1/SNAIL1 and SMAD7 (By similarity).

Cellular Location

Apical cell membrane; Single-pass type I membrane protein. Cell junction, tight junction. Note=Localizes primarily to the apical membrane with a small fraction in the upper part of tight junctions of epithelial cells.

Tissue Location

Preferentially expressed in epithelial tissues (PubMed:14718572). Expressed at high levels in lung, kidney, and colon (PubMed:12527193, PubMed:14718572). Expressed at high levels in retina, colon and mammary glands (PubMed:12527193). Moderately expressed in liver, spleen, pancreas and prostate (PubMed:12527193). Moderately to weakly expressed in the placenta (PubMed:14718572, PubMed:12527193) Weakly expressed in skeletal muscle and small intestine (PubMed:14718572).

CRB3 Antibody (Center) - Protocols

Provided below are standard protocols that you may find useful for product applications.

- [Western Blot](#)
- [Blocking Peptides](#)
- [Dot Blot](#)
- [Immunohistochemistry](#)
- [Immunofluorescence](#)
- [Immunoprecipitation](#)
- [Flow Cytometry](#)
- [Cell Culture](#)