

SERINC2 Antibody (Center)
Affinity Purified Rabbit Polyclonal Antibody (Pab)
Catalog # AP17605c

Specification

SERINC2 Antibody (Center) - Product Information

Application	WB,E
Primary Accession	O96SA4
Other Accession	NP_849196.2
Reactivity	Human
Host	Rabbit
Clonality	Polyclonal
Isotype	Rabbit Ig
Calculated MW	50742
Antigen Region	289-316

SERINC2 Antibody (Center) - Additional Information

Gene ID 347735

Other Names

Serine incorporator 2, Tumor differentially expressed protein 2-like, SERINC2, TDE2L

Target/Specificity

This SERINC2 antibody is generated from rabbits immunized with a KLH conjugated synthetic peptide between 289-316 amino acids from the Central region of human SERINC2.

Dilution

WB~~1:1000

Format

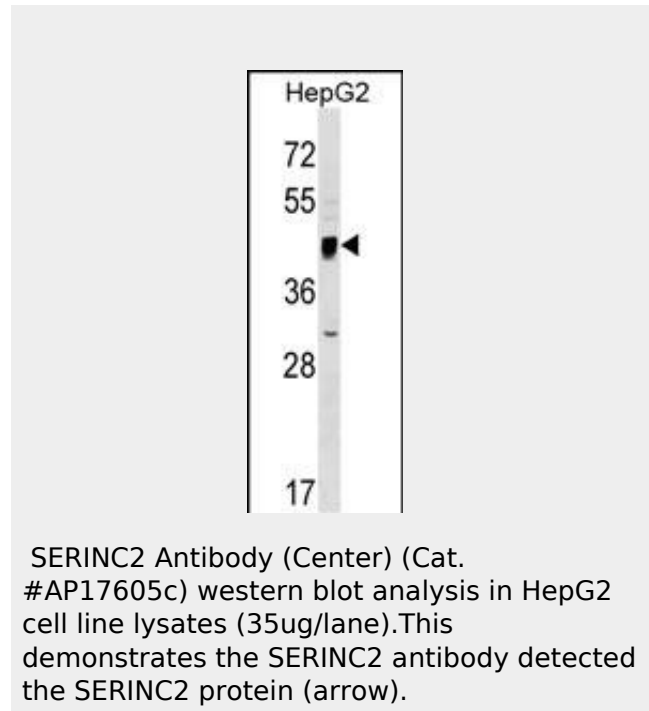
Purified polyclonal antibody supplied in PBS with 0.09% (W/V) sodium azide. This antibody is purified through a protein A column, followed by peptide affinity purification.

Storage

Maintain refrigerated at 2-8°C for up to 2 weeks. For long term storage store at -20°C in small aliquots to prevent freeze-thaw cycles.

Precautions

SERINC2 Antibody (Center) is for research use only and not for use in diagnostic or



SERINC2 Antibody (Center) - Background

SERINC2 is a member of a family of carrier proteins, Serinc 1-5, that incorporate a polar amino acid serine into membranes and facilitate the synthesis of two serine-derived lipids, phosphatidylserine and sphingolipids. The Serinc family is a unique protein family that shows no amino acid homology to other proteins but is highly conserved among eukaryotes. The members contain 11 transmembrane domains, similar to amino acid transporters.

SERINC2 Antibody (Center) - References

- Hillier, L.W., et al. Nature 434(7034):724-731(2005)
- Player, A., et al. Int. J. Cancer 107(2):238-243(2003)
- Clark, H.F., et al. Genome Res. 13(10):2265-2270(2003)

therapeutic procedures.

SERINC2 Antibody (Center) - Protein Information

Name SERINC2

Synonyms TDE2L

Cellular Location

Membrane; Multi-pass membrane protein

SERINC2 Antibody (Center) - Protocols

Provided below are standard protocols that you may find useful for product applications.

- [Western Blot](#)
- [Blocking Peptides](#)
- [Dot Blot](#)
- [Immunohistochemistry](#)
- [Immunofluorescence](#)
- [Immunoprecipitation](#)
- [Flow Cytometry](#)
- [Cell Culture](#)