

CCDC66 Antibody (C-term)
Affinity Purified Rabbit Polyclonal Antibody (Pab)
Catalog # AP17683b

Specification

CCDC66 Antibody (C-term) - Product Information

Application	WB,E
Primary Accession	A2RUB6
Other Accession	NP_001135419.1
Reactivity	Human
Host	Rabbit
Clonality	Polyclonal
Isotype	Rabbit Ig
Calculated MW	109411
Antigen Region	690-719

CCDC66 Antibody (C-term) - Additional Information

Gene ID 285331

Other Names

Coiled-coil domain-containing protein 66,
CCDC66

Target/Specificity

This CCDC66 antibody is generated from rabbits immunized with a KLH conjugated synthetic peptide between 690-719 amino acids from the C-terminal region of human CCDC66.

Dilution

WB~~1:1000

Format

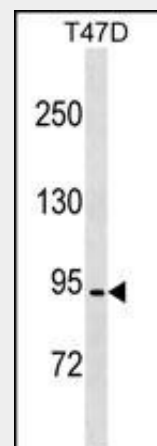
Purified polyclonal antibody supplied in PBS with 0.09% (W/V) sodium azide. This antibody is purified through a protein A column, followed by peptide affinity purification.

Storage

Maintain refrigerated at 2-8°C for up to 2 weeks. For long term storage store at -20°C in small aliquots to prevent freeze-thaw cycles.

Precautions

CCDC66 Antibody (C-term) is for research use only and not for use in diagnostic or



CCDC66 Antibody (C-term) (Cat. #AP17683b) western blot analysis in T47D cell line lysates (35ug/lane). This demonstrates the CCDC66 antibody detected the CCDC66 protein (arrow).

CCDC66 Antibody (C-term) - Background

The function of this protein is unknown.

CCDC66 Antibody (C-term) - References

Rose, J. Phd, et al. Mol. Med. (2010) In press :
Kiel, D.P., et al. BMC Med. Genet. 8 SUPPL 1, S14 (2007) :
Toulza, E., et al. Genome Biol. 8 (6), R107 (2007) :

therapeutic procedures.

CCDC66 Antibody (C-term) - Protein Information

Name CCDC66 ([HGNC:27709](#))

Function

Microtubule-binding protein required for ciliogenesis (PubMed:28235840). May function in ciliogenesis by mediating the transport of proteins like BBS4 to the cilium, but also through the organization of the centriolar satellites (PubMed:28235840). Plays a role in retina morphogenesis and/or homeostasis (By similarity).

Cellular Location

Cytoplasm, cytoskeleton, microtubule organizing center, centrosome. Cytoplasm, cytoskeleton, microtubule organizing center, centrosome, centriolar satellite. Cell projection, cilium. Cytoplasm, cytoskeleton, cilium basal body. Photoreceptor inner segment. Cell projection, cilium, photoreceptor outer segment.
Note=Restricted to the centrosomes and the spindle microtubules during mitosis (PubMed:28235840). Enriched in the inner segment of the photoreceptor (PubMed:19777273).

Tissue Location

Widely expressed (at protein level) (PubMed:28235840). Expressed in retina, mainly in photoreceptors but also in outer plexiform and ganglion cell layers (at protein level) (PubMed:19777273).

CCDC66 Antibody (C-term) - Protocols

Provided below are standard protocols that you may find useful for product applications.

- [Western Blot](#)
- [Blocking Peptides](#)
- [Dot Blot](#)
- [Immunohistochemistry](#)
- [Immunofluorescence](#)
- [Immunoprecipitation](#)

- [Flow Cytometry](#)
- [Cell Culture](#)