

UNC5CL Antibody (Center)
Affinity Purified Rabbit Polyclonal Antibody (Pab)
Catalog # AP18256c

Specification

UNC5CL Antibody (Center) - Product Information

Application	WB,E
Primary Accession	Q8IV45
Other Accession	NP_775832.2
Reactivity	Human
Host	Rabbit
Clonality	Polyclonal
Isotype	Rabbit Ig
Calculated MW	57818
Antigen Region	192-220

UNC5CL Antibody (Center) - Additional Information

Gene ID 222643

Other Names

UNC5C-like protein, Protein unc-5 homolog C-like, ZU5 and death domain-containing protein, UNC5CL, ZUD

Target/Specificity

This UNC5CL antibody is generated from rabbits immunized with a KLH conjugated synthetic peptide between 192-220 amino acids from the Central region of human UNC5CL.

Dilution

WB~~1:1000

Format

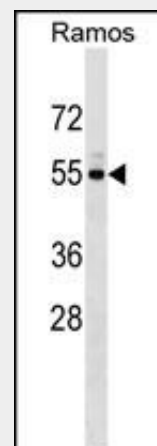
Purified polyclonal antibody supplied in PBS with 0.09% (W/V) sodium azide. This antibody is purified through a protein A column, followed by peptide affinity purification.

Storage

Maintain refrigerated at 2-8°C for up to 2 weeks. For long term storage store at -20°C in small aliquots to prevent freeze-thaw cycles.

Precautions

UNC5CL Antibody (Center) is for research



UNC5CL Antibody (Center) (Cat. #AP18256c) western blot analysis in Ramos cell line lysates (35ug/lane). This demonstrates the UNC5CL antibody detected the UNC5CL protein (arrow).

UNC5CL Antibody (Center) - Background

UNC5CL inhibits NF-kappa-B-dependent transcription by impairing NF-kappa-B binding to its targets.

UNC5CL Antibody (Center) - References

Zhang, J., et al. J. Biol. Chem. 279(17):17819-17825(2004)

use only and not for use in diagnostic or therapeutic procedures.

UNC5CL Antibody (Center) - Protein Information

Name UNC5CL

Synonyms ZUD

Function

Inhibits NF-kappa-B-dependent transcription by impairing NF- kappa-B binding to its targets.

Cellular Location

Membrane; Single-pass type III membrane protein. Cytoplasm

Tissue Location

Expressed in pancreas, liver and kidney.

UNC5CL Antibody (Center) - Protocols

Provided below are standard protocols that you may find useful for product applications.

- [Western Blot](#)
- [Blocking Peptides](#)
- [Dot Blot](#)
- [Immunohistochemistry](#)
- [Immunofluorescence](#)
- [Immunoprecipitation](#)
- [Flow Cytometry](#)
- [Cell Culture](#)