

HAUS8 Antibody (N-term)
Affinity Purified Rabbit Polyclonal Antibody (Pab)
Catalog # AP18272a**Specification****HAUS8 Antibody (N-term) - Product Information**

Application	WB,E
Primary Accession	O9BT25
Other Accession	NP_219485.1
Reactivity	Human
Host	Rabbit
Clonality	Polyclonal
Isotype	Rabbit Ig
Calculated MW	44857
Antigen Region	28-54

HAUS8 Antibody (N-term) - Additional Information**Gene ID** 93323**Other Names**

HAUS augmin-like complex subunit 8, HEC1/NDC80-interacting centrosome-associated protein 1, Sarcoma antigen NY-SAR-48, HAUS8, HICE1

Target/Specificity

This HAUS8 antibody is generated from rabbits immunized with a KLH conjugated synthetic peptide between 28-54 amino acids from the N-terminal region of human HAUS8.

Dilution

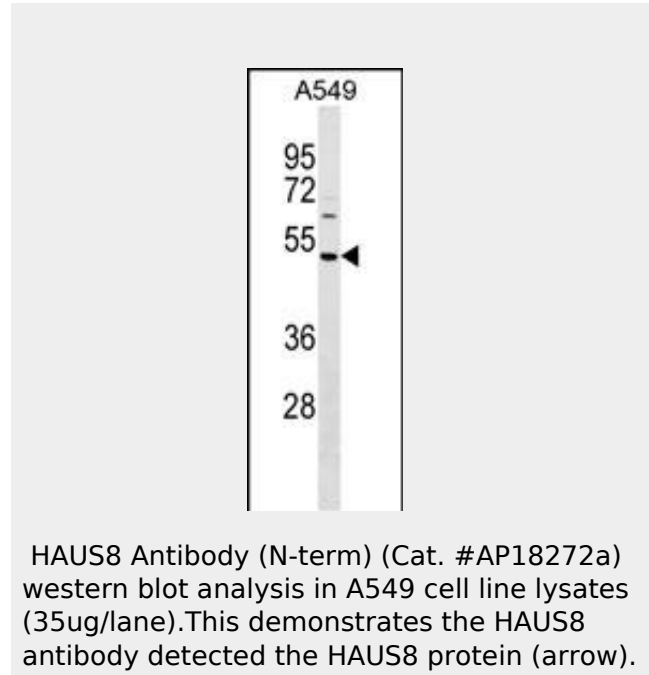
WB~~1:1000

Format

Purified polyclonal antibody supplied in PBS with 0.09% (W/V) sodium azide. This antibody is purified through a protein A column, followed by peptide affinity purification.

Storage

Maintain refrigerated at 2-8°C for up to 2 weeks. For long term storage store at -20°C in small aliquots to prevent freeze-thaw cycles.

Precautions**HAUS8 Antibody (N-term) - Background**

HAUS8 is 1 of 8 subunits of the 390-kD human augmin complex, or HAUS complex. The augmin complex was first identified in *Drosophila*, and its name comes from the Latin verb 'augmentare,' meaning 'to increase.' The augmin complex is a microtubule-binding complex involved in microtubule generation within the mitotic spindle and is vital to mitotic spindle assembly (Goshima et al., 2008 [PubMed 18443220]; Uehara et al., 2009 [PubMed 19369198]).

HAUS8 Antibody (N-term) - References

- Wu, G., et al. *Mol. Biol. Cell* 20(22):4686-4695(2009)
Lawo, S., et al. *Curr. Biol.* 19(10):816-826(2009)
Uehara, R., et al. *Proc. Natl. Acad. Sci. U.S.A.* 106(17):6998-7003(2009)

HAUS8 Antibody (N-term) is for research use only and not for use in diagnostic or therapeutic procedures.

Wu, G., et al. Mol. Cell. Biol. 28(11):3652-3662(2008)
Goshima, G., et al. J. Cell Biol. 181(3):421-429(2008)

HAUS8 Antibody (N-term) - Protein Information

Name HAUS8

Synonyms HICE1

Function

Contributes to mitotic spindle assembly, maintenance of centrosome integrity and completion of cytokinesis as part of the HAUS augmin-like complex.

Cellular Location

Cytoplasm. Cytoplasm, cytoskeleton, microtubule organizing center, centrosome. Cytoplasm, cytoskeleton, spindle. Cytoplasm, cytoskeleton, spindle pole. Note=During interphase, primarily cytoplasmic and associates with centrosomes and with the mitotic spindles, preferentially at the spindle pole vicinity. During anaphase and telophase, additionally associates with the spindle midzone and midbody, respectively. Localizes to mitotic spindle microtubules

HAUS8 Antibody (N-term) - Protocols

Provided below are standard protocols that you may find useful for product applications.

- [Western Blot](#)
- [Blocking Peptides](#)
- [Dot Blot](#)
- [Immunohistochemistry](#)
- [Immunofluorescence](#)
- [Immunoprecipitation](#)
- [Flow Cytometry](#)
- [Cell Culture](#)