

ANO1 Antibody (Center)
Affinity Purified Rabbit Polyclonal Antibody (Pab)
Catalog # AP18347c

Specification

ANO1 Antibody (Center) - Product Information

Application	WB,E
Primary Accession	Q5XXA6
Other Accession	NP_060513.5
Reactivity	Human
Host	Rabbit
Clonality	Polyclonal
Isotype	Rabbit Ig
Calculated MW	114078
Antigen Region	453-482

ANO1 Antibody (Center) - Additional Information

Gene ID 55107

Other Names

Anoctamin-1, Discovered on gastrointestinal stromal tumors protein 1, Oral cancer overexpressed protein 2, Transmembrane protein 16A, Tumor-amplified and overexpressed sequence 2, ANO1, DOG1, ORAOV2, TAOS2, TMEM16A

Target/Specificity

This ANO1 antibody is generated from rabbits immunized with a KLH conjugated synthetic peptide between 453-482 amino acids from the Central region of human ANO1.

Dilution

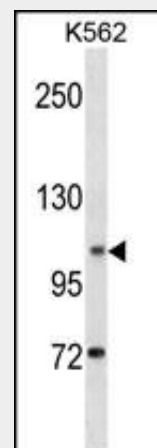
WB~1:1000

Format

Purified polyclonal antibody supplied in PBS with 0.09% (W/V) sodium azide. This antibody is purified through a protein A column, followed by peptide affinity purification.

Storage

Maintain refrigerated at 2-8°C for up to 2 weeks. For long term storage store at -20°C in small aliquots to prevent freeze-thaw cycles.



ANO1 Antibody (Center) (Cat. #AP18347c) western blot analysis in K562 cell line lysates (35ug/lane). This demonstrates the ANO1 Antibody detected the ANO1 protein (arrow).

ANO1 Antibody (Center) - Background

ANO1 acts as a calcium-activated chloride channel. Required for normal tracheal development (By similarity).

ANO1 Antibody (Center) - References

- Bailey, S.D., et al. Diabetes Care 33(10):2250-2253(2010)
- Barro-Soria, R., et al. Pflugers Arch. 459(3):485-497(2010)
- Hosgood, H.D. III, et al. Occup Environ Med 66(12):848-853(2009)
- Ferrera, L., et al. J. Biol. Chem. 284(48):33360-33368(2009)
- Talmud, P.J., et al. Am. J. Hum. Genet. 85(5):628-642(2009)

Precautions

ANO1 Antibody (Center) is for research use only and not for use in diagnostic or therapeutic procedures.

ANO1 Antibody (Center) - Protein Information**Name** ANO1**Function**

Calcium-activated chloride channel (CaCC) which plays a role in transepithelial anion transport and smooth muscle contraction. Required for the normal functioning of the interstitial cells of Cajal (ICCs) which generate electrical pacemaker activity in gastrointestinal smooth muscles. Acts as a major contributor to basal and stimulated chloride conductance in airway epithelial cells and plays an important role in tracheal cartilage development.

Cellular Location

Cell membrane; Multi-pass membrane protein. Cytoplasm. Note=Cytoplasmic localization seen in neoplastic cells of head and neck squamous cell carcinoma (HNSCC) tumors.

Tissue Location

Broadly expressed with higher levels in liver, skeletal muscle and gastrointestinal muscles

ANO1 Antibody (Center) - Protocols

Provided below are standard protocols that you may find useful for product applications.

- [Western Blot](#)
- [Blocking Peptides](#)
- [Dot Blot](#)
- [Immunohistochemistry](#)
- [Immunofluorescence](#)
- [Immunoprecipitation](#)
- [Flow Cytometry](#)
- [Cell Culture](#)