

**METTL2B Antibody (N-term)**  
**Affinity Purified Rabbit Polyclonal Antibody (Pab)**  
**Catalog # AP18416a**

**Specification**

**METTL2B Antibody (N-term) - Product Information**

Application	WB,E
Primary Accession	<a href="#">Q6P1O9</a>
Other Accession	<a href="#">NP_060866.2</a>
Reactivity	Human
Host	Rabbit
Clonality	Polyclonal
Isotype	Rabbit Ig
Calculated MW	43426
Antigen Region	1-30

**METTL2B Antibody (N-term) - Additional Information**

**Gene ID** 55798

**Other Names**

Methyltransferase-like protein 2B, 211-, METTL2B

**Target/Specificity**

This METTL2B antibody is generated from rabbits immunized with a KLH conjugated synthetic peptide between 1-30 amino acids from the N-terminal region of human METTL2B.

**Dilution**

WB~~1:1000

**Format**

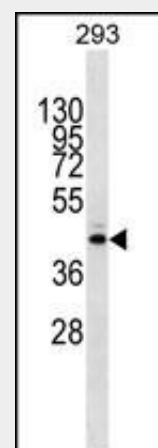
Purified polyclonal antibody supplied in PBS with 0.09% (W/V) sodium azide. This antibody is purified through a protein A column, followed by peptide affinity purification.

**Storage**

Maintain refrigerated at 2-8°C for up to 2 weeks. For long term storage store at -20°C in small aliquots to prevent freeze-thaw cycles.

**Precautions**

METTL2B Antibody (N-term) is for research



METTL2B Antibody (N-term) (Cat. #AP18416a) western blot analysis in 293 cell line lysates (35ug/lane). This demonstrates the METTL2B Antibody detected the METTL2B protein (arrow).

**METTL2B Antibody (N-term) - Background**

This gene is a member of a family of methyltransferases that share homology with, but are distinct from, the UbiE family of methyltransferases. Alternatively spliced variants which encode different protein isoforms have been described; however, not all variants have been fully characterized.

**METTL2B Antibody (N-term) - References**

Zody, M.C., et al. Nature 440(7087):1045-1049(2006)  
Zhang, S.X., et al. Gene 280 (1-2), 135-144 (2001) :

use only and not for use in diagnostic or therapeutic procedures.

#### **METTL2B Antibody (N-term) - Protein Information**

**Name** METTL2B

{ECO:0000303|PubMed:28655767,  
ECO:0000312|HGNC:HGNC:18272}

**Function**

S-adenosyl-L-methionine-dependent methyltransferase that mediates N(3)-methylcytidine modification of residue 32 of the tRNA anticodon loop of tRNA(Thr)(UGU) and tRNA(Arg)(CCU).

#### **METTL2B Antibody (N-term) - Protocols**

Provided below are standard protocols that you may find useful for product applications.

- [Western Blot](#)
- [Blocking Peptides](#)
- [Dot Blot](#)
- [Immunohistochemistry](#)
- [Immunofluorescence](#)
- [Immunoprecipitation](#)
- [Flow Cytometry](#)
- [Cell Culture](#)