

B4GALT4 Antibody (Center)
Affinity Purified Rabbit Polyclonal Antibody (Pab)
Catalog # AP18535c

Specification

B4GALT4 Antibody (Center) - Product Information

Application	WB,E
Primary Accession	O60513
Other Accession	NP_003769.1
Reactivity	Human
Host	Rabbit
Clonality	Polyclonal
Isotype	Rabbit Ig
Calculated MW	40041
Antigen Region	91-117

B4GALT4 Antibody (Center) - Additional Information

Gene ID 8702

Other Names

Beta-1, 4-galactosyltransferase 4, Beta-1, 4-GalTase 4, Beta4Gal-T4, b4Gal-T4, 241-, UDP-Gal:beta-GlcNAc beta-1, 4-galactosyltransferase 4, UDP-galactose:beta-N-acetylglucosamine beta-1, 4-galactosyltransferase 4, N-acetylglucosamine synthase, Nal synthase, Lactotriaosylceramide beta-1, 4-galactosyltransferase, Beta-N-acetylglucosaminyl-glycolipid beta-1, 4-galactosyltransferase, B4GALT4

Target/Specificity

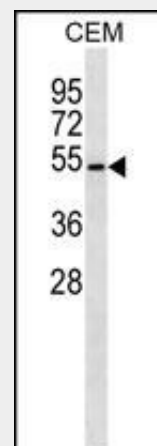
This B4GALT4 antibody is generated from rabbits immunized with a KLH conjugated synthetic peptide between 91-117 amino acids from the Central region of human B4GALT4.

Dilution

WB~~1:1000

Format

Purified polyclonal antibody supplied in PBS with 0.09% (W/V) sodium azide. This antibody is purified through a protein A column, followed by peptide affinity purification.



B4GALT4 Antibody (Center) (Cat. #AP18535c) western blot analysis in CEM cell line lysates (35ug/lane). This demonstrates the B4GALT4 antibody detected the B4GALT4 protein (arrow).

B4GALT4 Antibody (Center) - Background

This gene is one of seven beta-1,4-galactosyltransferase (beta4GalT) genes. They encode type II membrane-bound glycoproteins that appear to have exclusive specificity for the donor substrate UDP-galactose; all transfer galactose in a beta1,4 linkage to similar acceptor sugars: GlcNAc, Glc, and Xyl. Each beta4GalT has a distinct function in the biosynthesis of different glycoconjugates and saccharide structures. As type II membrane proteins, they have an N-terminal hydrophobic signal sequence that directs the protein to the Golgi apparatus and which then remains uncleaved to function as a transmembrane anchor. By sequence similarity, the beta4GalTs form four groups: beta4GalT1 and beta4GalT2, beta4GalT3 and beta4GalT4, beta4GalT5 and beta4GalT6, and

Storage

Maintain refrigerated at 2-8°C for up to 2 weeks. For long term storage store at -20°C in small aliquots to prevent freeze-thaw cycles.

Precautions

B4GALT4 Antibody (Center) is for research use only and not for use in diagnostic or therapeutic procedures.

B4GALT4 Antibody (Center) - Protein Information

Name B4GALT4 ([HGNC:927](#))

Function

Responsible for the synthesis of complex-type N-linked oligosaccharides in many glycoproteins as well as the carbohydrate moieties of glycolipids.

Cellular Location

Golgi apparatus, Golgi stack membrane;
Single-pass type II membrane protein.
Note=Trans cisternae of Golgi stack

Tissue Location

High expression in heart, placenta, kidney and pancreas; lower in brain, colon, lung, muscle, ovary, testis and uterus

beta4GalT7. The enzyme encoded by this gene appears to mainly play a role in glycolipid biosynthesis. Two alternatively spliced transcript variants have been found for this gene.

B4GALT4 Antibody (Center) - References

Clark, H.F., et al. Genome Res. 13(10):2265-2270(2003)
Guo, S., et al. Glycobiology 11(10):813-820(2001)
Suzuki, Y., et al. Genome Res. 11(5):677-684(2001)
Amado, M., et al. Biochim. Biophys. Acta 1473(1):35-53(1999)
Fan, Y., et al. Sci. China, C, Life Sci. 42(4):337-345(1999)

B4GALT4 Antibody (Center) - Protocols

Provided below are standard protocols that you may find useful for product applications.

- [Western Blot](#)
- [Blocking Peptides](#)
- [Dot Blot](#)
- [Immunohistochemistry](#)
- [Immunofluorescence](#)
- [Immunoprecipitation](#)
- [Flow Cytometry](#)
- [Cell Culture](#)