

**SEC23B Antibody (C-term)**  
**Affinity Purified Rabbit Polyclonal Antibody (Pab)**  
**Catalog # AP18650b**

**Specification**

**SEC23B Antibody (C-term) - Product Information**

Application	WB,E
Primary Accession	<a href="#">Q15437</a>
Other Accession	<a href="#">Q9D662</a> , <a href="#">Q3SZN2</a> , <a href="#">NP_001166216.1</a>
Reactivity	Human
Predicted	Bovine, Mouse
Host	Rabbit
Clonality	Polyclonal
Isotype	Rabbit Ig
Calculated MW	86479
Antigen Region	655-684

**SEC23B Antibody (C-term) - Additional Information**

**Gene ID** 10483

**Other Names**

Protein transport protein Sec23B,  
SEC23-related protein B, SEC23B

**Target/Specificity**

This SEC23B antibody is generated from rabbits immunized with a KLH conjugated synthetic peptide between 655-684 amino acids from the C-terminal region of human SEC23B.

**Dilution**

WB~~1:1000

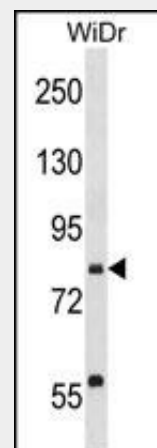
**Format**

Purified polyclonal antibody supplied in PBS with 0.09% (W/V) sodium azide. This antibody is purified through a protein A column, followed by peptide affinity purification.

**Storage**

Maintain refrigerated at 2-8°C for up to 2 weeks. For long term storage store at -20°C in small aliquots to prevent freeze-thaw cycles.

**Precautions**



SEC23B Antibody (C-term) (Cat. #AP18650b) western blot analysis in WiDr cell line lysates (35ug/lane). This demonstrates the SEC23B antibody detected the SEC23B protein (arrow).

**SEC23B Antibody (C-term) - Background**

The protein encoded by this gene is a member of the SEC23 subfamily of the SEC23/SEC24 family, which is involved in vesicle trafficking. The encoded protein has similarity to yeast Sec23p component of COPII. COPII is the coat protein complex responsible for vesicle budding from the ER. The function of this gene product has been implicated in cargo selection and concentration. Multiple alternatively spliced transcript variants have been identified in this gene.

**SEC23B Antibody (C-term) - References**

Rose, J.E., et al. Mol. Med. 16 (7-8), 247-253 (2010) :  
Fermo, E., et al. Blood Cells Mol. Dis. 45(1):20-22(2010)  
Bianchi, P., et al. Hum. Mutat.

SEC23B Antibody (C-term) is for research use only and not for use in diagnostic or therapeutic procedures.

30(9):1292-1298(2009)  
Schwarz, K., et al. Nat. Genet.  
41(8):936-940(2009)  
Oh, J.H., et al. Mamm. Genome  
16(12):942-954(2005)

#### **SEC23B Antibody (C-term) - Protein Information**

**Name** SEC23B ([HGNC:10702](#))

#### **Function**

Component of the coat protein complex II (COPII) which promotes the formation of transport vesicles from the endoplasmic reticulum (ER). The coat has two main functions, the physical deformation of the endoplasmic reticulum membrane into vesicles and the selection of cargo molecules for their transport to the Golgi complex.

#### **Cellular Location**

Cytoplasmic vesicle, COPII-coated vesicle membrane

{ECO:0000250|UniProtKB:Q15436};

Peripheral membrane protein

{ECO:0000250|UniProtKB:Q15436};

Cytoplasmic side

{ECO:0000250|UniProtKB:Q15436}.

Endoplasmic reticulum membrane;

Peripheral membrane protein

{ECO:0000250|UniProtKB:Q15436};

Cytoplasmic side

{ECO:0000250|UniProtKB:Q15436}.

Cytoplasm, cytosol

{ECO:0000250|UniProtKB:Q15436}

#### **Tissue Location**

Ubiquitously expressed.

#### **SEC23B Antibody (C-term) - Protocols**

Provided below are standard protocols that you may find useful for product applications.

- [Western Blot](#)
- [Blocking Peptides](#)
- [Dot Blot](#)
- [Immunohistochemistry](#)
- [Immunofluorescence](#)
- [Immunoprecipitation](#)
- [Flow Cytometry](#)
- [Cell Culture](#)