

Mouse Cst3 Antibody (Center)
Affinity Purified Rabbit Polyclonal Antibody (Pab)
Catalog # AP18754c

Specification

Mouse Cst3 Antibody (Center) - Product Information

Application	WB,E
Primary Accession	P21460
Other Accession	P14841 , NP_034106.2
Reactivity	Mouse
Predicted	Rat
Host	Rabbit
Clonality	Polyclonal
Isotype	Rabbit Ig
Calculated MW	15531
Antigen Region	39-65

Mouse Cst3 Antibody (Center) - Additional Information

Gene ID 13010

Other Names

Cystatin-C, Cystatin-3, Cst3

Target/Specificity

This Mouse Cst3 antibody is generated from rabbits immunized with a KLH conjugated synthetic peptide between 39-65 amino acids from the Central region of mouse Cst3.

Dilution

WB~~1:1000

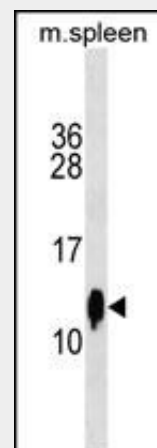
Format

Purified polyclonal antibody supplied in PBS with 0.09% (W/V) sodium azide. This antibody is purified through a protein A column, followed by peptide affinity purification.

Storage

Maintain refrigerated at 2-8°C for up to 2 weeks. For long term storage store at -20°C in small aliquots to prevent freeze-thaw cycles.

Precautions



Mouse Cst3 Antibody (Center)(Cat. #AP18754c) western blot analysis in mouse spleen tissue lysates (35ug/lane). This demonstrates the Cst3 antibody detected the Cst3 protein (arrow).

Mouse Cst3 Antibody (Center) - Background

As an inhibitor of cysteine proteinases, this protein is thought to serve an important physiological role as a local regulator of this enzyme activity.

Mouse Cst3 Antibody (Center) - References

- Schulte, S., et al. Am. J. Pathol. 177(1):456-463(2010)
- Baston-Buest, D.M., et al. Reproduction 139(4):741-748(2010)
- Freundeus, K.H., et al. Int. J. Biochem. Cell Biol. 41(11):2262-2269(2009)
- Trimarchi, J.M., et al. Dev. Dyn. 238(9):2327-2329(2009)
- Sun, B., et al. Neuron 60(2):247-257(2008)

Mouse Cst3 Antibody (Center) is for research use only and not for use in diagnostic or therapeutic procedures.

Mouse Cst3 Antibody (Center) - Protein Information

Name Cst3

Function

As an inhibitor of cysteine proteinases, this protein is thought to serve an important physiological role as a local regulator of this enzyme activity.

Cellular Location

Secreted.

Mouse Cst3 Antibody (Center) - Protocols

Provided below are standard protocols that you may find useful for product applications.

- [Western Blot](#)
- [Blocking Peptides](#)
- [Dot Blot](#)
- [Immunohistochemistry](#)
- [Immunofluorescence](#)
- [Immunoprecipitation](#)
- [Flow Cytometry](#)
- [Cell Culture](#)