

CLCF1 Antibody (N-term)
Affinity Purified Rabbit Polyclonal Antibody (Pab)
Catalog # AP18774a

Specification

CLCF1 Antibody (N-term) - Product Information

Application	WB,E
Primary Accession	Q9UBD9
Other Accession	Q9QZM3 , NP_001159684.1
Reactivity	Human
Predicted	Mouse
Host	Rabbit
Clonality	Polyclonal
Isotype	Rabbit Ig
Calculated MW	25176
Antigen Region	46-72

CLCF1 Antibody (N-term) - Additional Information

Gene ID 23529

Other Names

Cardiotrophin-like cytokine factor 1,
B-cell-stimulating factor 3, BSF-3, Novel
neurotrophin-1, NNT-1, CLCF1, BSF3, CLC,
NNT1

Target/Specificity

This CLCF1 antibody is generated from rabbits immunized with a KLH conjugated synthetic peptide between 46-72 amino acids from the N-terminal region of human CLCF1.

Dilution

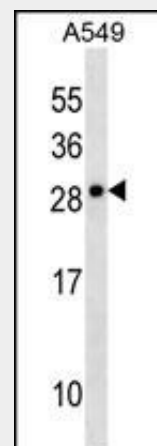
WB~1:1000

Format

Purified polyclonal antibody supplied in PBS with 0.09% (W/V) sodium azide. This antibody is purified through a protein A column, followed by peptide affinity purification.

Storage

Maintain refrigerated at 2-8°C for up to 2 weeks. For long term storage store at -20°C in small aliquots to prevent freeze-thaw cycles.



CLCF1 Antibody (N-term)(Cat. #AP18774a) western blot analysis in A549 cell line lysates (35ug/lane). This demonstrates the CLCF1 antibody detected the CLCF1 protein (arrow).

CLCF1 Antibody (N-term) - Background

This gene is a member of the glycoprotein (gp)130 cytokine family and encodes cardiotrophin-like cytokine factor 1 (CLCF1). CLCF1 forms a heterodimer complex with cytokine receptor-like factor 1 (CRLF1). This dimer competes with ciliary neurotrophic factor (CNTF) for binding to the ciliary neurotrophic factor receptor (CNTFR) complex, and activates the Jak-STAT signaling cascade. CLCF1 can be actively secreted from cells by forming a complex with soluble type I CRLF1 or soluble CNTFR. CLCF1 is a potent neurotrophic factor, B-cell stimulatory agent and neuroendocrine modulator of pituitary corticotroph function. Defects in CLCF1 cause cold-induced sweating syndrome 2 (CISS2). This syndrome is characterized by a profuse sweating after exposure

Precautions

CLCF1 Antibody (N-term) is for research use only and not for use in diagnostic or therapeutic procedures.

to cold as well as congenital physical abnormalities of the head and spine. Alternative splicing results in multiple transcript variants encoding distinct isoforms.

CLCF1 Antibody (N-term) - Protein Information

Name CLCF1

Synonyms BSF3, CLC, NNT1

Function

In complex with CRLF1, forms a heterodimeric neurotropic cytokine that plays a crucial role during neuronal development (Probable). Also stimulates B-cells. Binds to and activates the ILST/gp130 receptor.

Cellular Location

Secreted.

Tissue Location

Expressed predominantly in lymph nodes, spleen, peripheral blood lymphocytes, bone marrow, and fetal liver

CLCF1 Antibody (N-term) - References

Rousseau, F., et al. J. Biol. Chem. 283(44):30341-30350(2008)
Dagoneau, N., et al. Am. J. Hum. Genet. 80(5):966-970(2007)
Rousseau, F., et al. Proc. Natl. Acad. Sci. U.S.A. 103(26):10068-10073(2006)
Perret, D., et al. J. Biol. Chem. 279(42):43961-43970(2004)
Burger, R., et al. Br. J. Haematol. 123(5):869-878(2003)

CLCF1 Antibody (N-term) - Protocols

Provided below are standard protocols that you may find useful for product applications.

- [Western Blot](#)
- [Blocking Peptides](#)
- [Dot Blot](#)
- [Immunohistochemistry](#)
- [Immunofluorescence](#)
- [Immunoprecipitation](#)
- [Flow Cytometry](#)
- [Cell Culture](#)