

ERBB2 Antibody (C-term T1172/S1174)
Affinity Purified Rabbit Polyclonal Antibody (Pab)
Catalog # AP18891b

Specification

ERBB2 Antibody (C-term T1172/S1174) - Product Information

Application	WB,E
Primary Accession	P04626
Other Accession	P06494 , P70424 , NP_001005862.1
Reactivity	Human
Predicted	Mouse, Rat
Host	Rabbit
Clonality	Polyclonal
Isotype	Rabbit Ig
Calculated MW	137910
Antigen Region	1151-1179

ERBB2 Antibody (C-term T1172/S1174) - Additional Information

Gene ID 2064

Other Names

Receptor tyrosine-protein kinase erbB-2,
Metastatic lymph node gene 19 protein,
MLN 19, Proto-oncogene Neu,
Proto-oncogene c-ErbB-2, Tyrosine
kinase-type cell surface receptor HER2,
p185erbB2, CD340, ERBB2, HER2, MLN19,
NEU, NGL

Target/Specificity

This ERBB2 antibody is generated from rabbits immunized with a KLH conjugated synthetic peptide between 1151-1179 amino acids from the C-terminal region of human ERBB2.

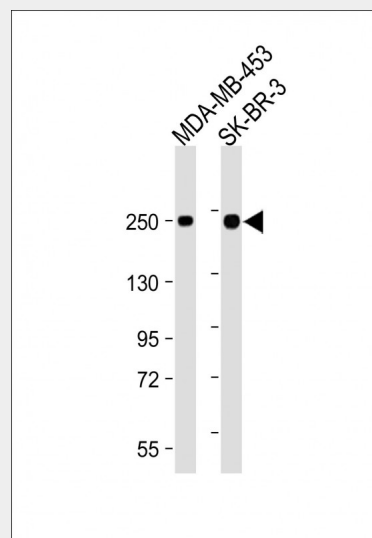
Dilution

WB~~1:2000

Format

Purified polyclonal antibody supplied in PBS with 0.09% (W/V) sodium azide. This antibody is purified through a protein A column, followed by peptide affinity purification.

Storage



All lanes : Anti-ERBB2-T1172/S1174 at 1:2000 dilution Lane 1: MDA-MB-453 whole cell lysate Lane 2: SK-BR-3 whole cell lysate Lysates/proteins at 20 µg per lane. Secondary Goat Anti-Rabbit IgG, (H+L), Peroxidase conjugated at 1/10000 dilution. Predicted band size : 138 kDa Blocking/Dilution buffer: 5% NFDM/TBST.

ERBB2 Antibody (C-term T1172/S1174) - Background

This gene encodes a member of the epidermal growth factor (EGF) receptor family of receptor tyrosine kinases. This protein has no ligand binding domain of its own and therefore cannot bind growth factors. However, it does bind tightly to other ligand-bound EGF receptor family members to form a heterodimer, stabilizing ligand binding and enhancing kinase-mediated activation of downstream signalling pathways, such as those involving mitogen-activated protein kinase and phosphatidylinositol-3 kinase.

Maintain refrigerated at 2-8°C for up to 2 weeks. For long term storage store at -20°C in small aliquots to prevent freeze-thaw cycles.

Precautions

ERBB2 Antibody (C-term T1172/S1174) is for research use only and not for use in diagnostic or therapeutic procedures.

ERBB2 Antibody (C-term T1172/S1174) - Protein Information

Name ERBB2

Synonyms HER2, MLN19, NEU, NGL

Function

Protein tyrosine kinase that is part of several cell surface receptor complexes, but that apparently needs a coreceptor for ligand binding. Essential component of a neuregulin-receptor complex, although neuregulins do not interact with it alone. GP30 is a potential ligand for this receptor. Regulates outgrowth and stabilization of peripheral microtubules (MTs). Upon ERBB2 activation, the MEMO1-RHOA-DIAPH1 signaling pathway elicits the phosphorylation and thus the inhibition of GSK3B at cell membrane. This prevents the phosphorylation of APC and CLASP2, allowing its association with the cell membrane. In turn, membrane-bound APC allows the localization of MACF1 to the cell membrane, which is required for microtubule capture and stabilization.

Cellular Location

[Isoform 1]: Cell membrane; Single-pass type I membrane protein Early endosome. Cytoplasm, perinuclear region. Nucleus. Note=Translocation to the nucleus requires endocytosis, probably endosomal sorting and is mediated by importin beta-1/KPNB1. Also detected in VPS35-positive endosome-to-TGN retrograde vesicles (PubMed:31138794). [Isoform 3]: Cytoplasm. Nucleus.

Tissue Location

Expressed in a variety of tumor tissues including primary breast tumors and tumors from small bowel, esophagus, kidney and mouth.

Allelic variations at amino acid positions 654 and 655 of isoform a (positions 624 and 625 of isoform b) have been reported, with the most common allele, Ile654/Ile655, shown here. Amplification and/or overexpression of this gene has been reported in numerous cancers, including breast and ovarian tumors. Alternative splicing results in several additional transcript variants, some encoding different isoforms and others that have not been fully characterized.

ERBB2 Antibody (C-term T1172/S1174) - References

Geradts, J., et al. Cancer Invest. 28(9):969-977(2010)
Zaoui, K., et al. Proc. Natl. Acad. Sci. U.S.A. 107(43):18517-18522(2010)
Oliveras, G., et al. Ann. N. Y. Acad. Sci. 1210, 86-92 (2010) :
Han, J.S., et al. Anticancer Res. 30(9):3407-3412(2010)
Stackiewicz, R., et al. Isr. Med. Assoc. J. 12(5):290-295(2010)

**ERBB2 Antibody (C-term T1172/S1174) -
Protocols**

Provided below are standard protocols that you may find useful for product applications.

- [Western Blot](#)
- [Blocking Peptides](#)
- [Dot Blot](#)
- [Immunohistochemistry](#)
- [Immunofluorescence](#)
- [Immunoprecipitation](#)
- [Flow Cytometry](#)
- [Cell Culture](#)