

**XRCC4 Antibody (Center)**  
**Affinity Purified Rabbit Polyclonal Antibody (Pab)**  
**Catalog # AP18904b**

**Specification**

**XRCC4 Antibody (Center) - Product Information**

Application	WB,E
Primary Accession	<a href="#">Q13426</a>
Other Accession	<a href="#">NP_003392.1</a>
Reactivity	Human
Host	Rabbit
Clonality	Polyclonal
Isotype	Rabbit Ig
Calculated MW	38287
Antigen Region	205-234

**XRCC4 Antibody (Center) - Additional Information**

**Gene ID** 7518

**Other Names**

DNA repair protein XRCC4, X-ray repair cross-complementing protein 4, XRCC4

**Target/Specificity**

This XRCC4 antibody is generated from rabbits immunized with a KLH conjugated synthetic peptide between 205-234 amino acids from the Central region of human XRCC4.

**Dilution**

WB~~1:1000

**Format**

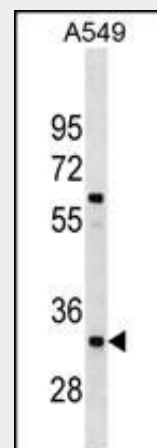
Purified polyclonal antibody supplied in PBS with 0.09% (W/V) sodium azide. This antibody is purified through a protein A column, followed by peptide affinity purification.

**Storage**

Maintain refrigerated at 2-8°C for up to 2 weeks. For long term storage store at -20°C in small aliquots to prevent freeze-thaw cycles.

**Precautions**

XRCC4 Antibody (Center) is for research use only and not for use in diagnostic or therapeutic procedures.



XRCC4 Antibody (Center)(Cat. #AP18904b) western blot analysis in A549 cell line lysates (35ug/lane).This demonstrates the XRCC4 antibody detected the XRCC4 protein (arrow).

**XRCC4 Antibody (Center) - Background**

The protein encoded by this gene functions together with DNA ligase IV and the DNA-dependent protein kinase in the repair of DNA double-strand break by non-homologous end joining and the completion of V(D)J recombination events. The non-homologous end-joining pathway is required both for normal development and for suppression of tumors. This gene functionally complements XR-1 Chinese hamster ovary cell mutant, which is impaired in DNA double-strand breaks produced by ionizing radiation and restriction enzymes. Alternative transcription initiation and alternative splicing generates several transcript variants. [provided by RefSeq].

**XRCC4 Antibody (Center) - References**

**XRCC4 Antibody (Center) - Protein Information****Name** XRCC4**Function**

Involved in DNA non-homologous end joining (NHEJ) required for double-strand break repair and V(D)J recombination. Binds to DNA and to DNA ligase IV (LIG4). The LIG4-XRCC4 complex is responsible for the NHEJ ligation step, and XRCC4 enhances the joining activity of LIG4. Binding of the LIG4-XRCC4 complex to DNA ends is dependent on the assembly of the DNA-dependent protein kinase complex DNA-PK to these DNA ends.

**Cellular Location**

Nucleus

**Tissue Location**

Widely expressed..

Gomes, B.C., et al. Oncol. Rep. 24(4):1079-1085(2010)  
Liu, Y., et al. Carcinogenesis 31(10):1762-1769(2010)  
Briggs, F.B., et al. Am. J. Epidemiol. 172(2):217-224(2010)  
Liu, N., et al. Wei Sheng Yan Jiu 39(4):407-411(2010)  
Bau, D.T., et al. Anticancer Res. 30(7):2727-2730(2010)

**XRCC4 Antibody (Center) - Protocols**

Provided below are standard protocols that you may find useful for product applications.

- [Western Blot](#)
- [Blocking Peptides](#)
- [Dot Blot](#)
- [Immunohistochemistry](#)
- [Immunofluorescence](#)
- [Immunoprecipitation](#)
- [Flow Cytometry](#)
- [Cell Culture](#)