

COL19A1 Antibody (N-term)
Affinity Purified Rabbit Polyclonal Antibody (Pab)
Catalog # AP18907a

Specification

COL19A1 Antibody (N-term) - Product Information

Application	WB,E
Primary Accession	Q14993
Other Accession	NP_001849.2
Reactivity	Human, Mouse
Host	Rabbit
Clonality	Polyclonal
Isotype	Rabbit Ig
Calculated MW	115221
Antigen Region	175-204

COL19A1 Antibody (N-term) - Additional Information

Gene ID 1310

Other Names

Collagen alpha-1(XIX) chain, Collagen alpha-1(Y) chain, COL19A1

Target/Specificity

This COL19A1 antibody is generated from rabbits immunized with a KLH conjugated synthetic peptide between 175-204 amino acids from the N-terminal region of human COL19A1.

Dilution

WB~~1:1000

Format

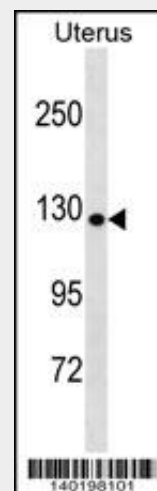
Purified polyclonal antibody supplied in PBS with 0.09% (W/V) sodium azide. This antibody is purified through a protein A column, followed by peptide affinity purification.

Storage

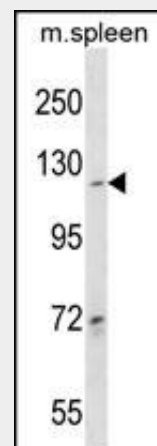
Maintain refrigerated at 2-8°C for up to 2 weeks. For long term storage store at -20°C in small aliquots to prevent freeze-thaw cycles.

Precautions

COL19A1 Antibody (N-term) is for research use only and not for use in diagnostic or



COL19A1 Antibody (N-term)(Cat. #AP18907a) western blot analysis in Uterus tissue lysates (35ug/lane).This demonstrates the COL19A1 antibody detected the COL19A1 protein (arrow).



COL19A1 Antibody (N-term) (Cat. #AP18907a) western blot analysis in mouse spleen tissue lysates (35ug/lane).This demonstrates the COL19A1 antibody detected the COL19A1 protein (arrow).

COL19A1 Antibody (N-term) - Background

This gene encodes the alpha chain of type XIX

therapeutic procedures.

COL19A1 Antibody (N-term) - Protein Information

Name COL19A1

Function

May act as a cross-bridge between fibrils and other extracellular matrix molecules. Involved in skeletal myogenesis in the developing esophagus. May play a role in organization of the pericellular matrix or the sphincteric smooth muscle.

Cellular Location

Secreted, extracellular space, extracellular matrix

Tissue Location

Localized to vascular, neuronal, mesenchymal, and some epithelial basement membrane zones in umbilical cord

collagen, a member of the FACIT collagen family (fibril-associated collagens with interrupted helices). Although the function of this collagen is not known, other members of this collagen family are found in association with fibril-forming collagens such as type I and II, and serve to maintain the integrity of the extracellular matrix. The transcript produced from this gene has an unusually large 3' UTR which has not been completely sequenced.

COL19A1 Antibody (N-term) - References

Rose, J.E., et al. Mol. Med. 16 (7-8), 247-253 (2010) : Barber, M.J., et al. PLoS ONE 5 (3), E9763 (2010) : Boudko, S.P., et al. J. Biol. Chem. 283(49):34345-34351(2008) Kapyla, J., et al. J. Biol. Chem. 279(49):51677-51687(2004) Mungall, A.J., et al. Nature 425(6960):805-811(2003)

COL19A1 Antibody (N-term) - Protocols

Provided below are standard protocols that you may find useful for product applications.

- [Western Blot](#)
- [Blocking Peptides](#)
- [Dot Blot](#)
- [Immunohistochemistry](#)
- [Immunofluorescence](#)
- [Immunoprecipitation](#)
- [Flow Cytometry](#)
- [Cell Culture](#)